

BRUWN SIX DEPARTURE (RNAV)

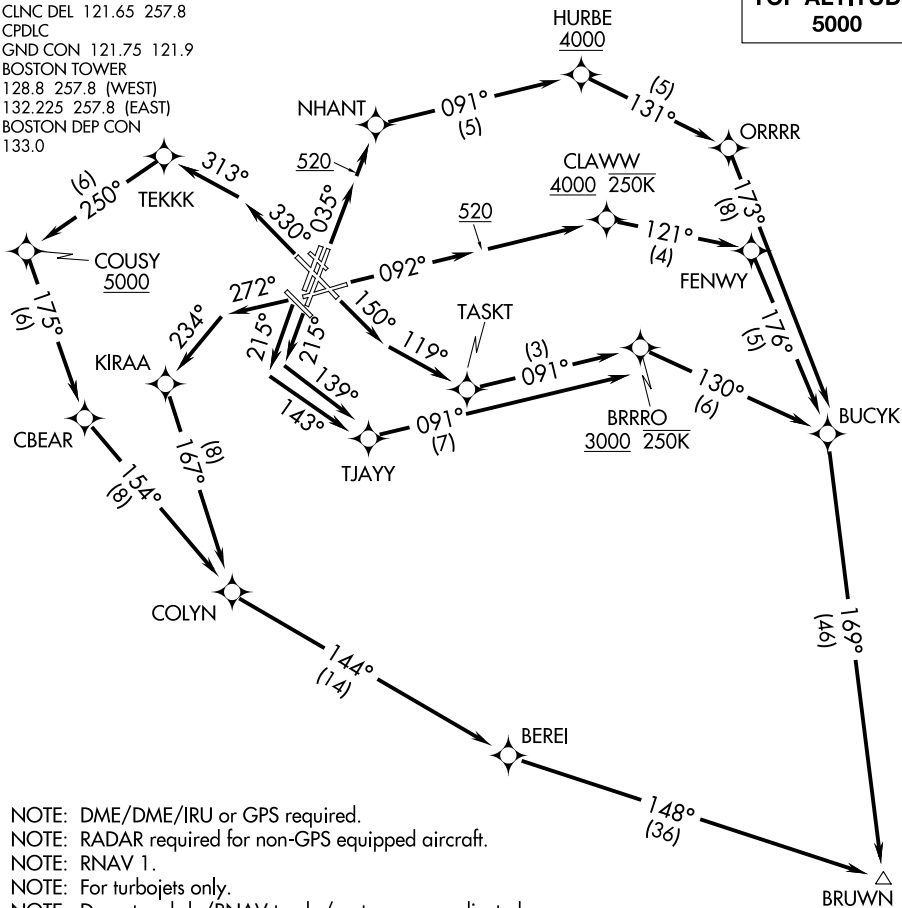
GENERAL EDWARD LAWRENCE LOGAN INTL (BOS)

AL-58 (FAA)

BOSTON, MASSACHUSETTS

D-ATIS 135.0
CLNC DEL 121.65 257.8
CPDLC
GND CON 121.75 121.9
BOSTON TOWER
128.8 257.8 (WEST)
132.225 257.8 (EAST)
BOSTON DEP CON
133.0

TOP ALTITUDE:
5000



NOTE: DME/DME/IRU or GPS required.

NOTE: RADAR required for non-GPS equipped aircraft.

NOTE: RNAV 1.

NOTE: For turbojets only.

NOTE: Departure hdg./RNAV tracks/vectors are predicated on avoiding noise sensitive areas. Flight crew awareness and compliance is important in minimizing noise impacts on surrounding communities.

NOTE: Rwy 15R, 22L/R: Do not exceed 210K until leaving 520' MSL.

NOTE: Do not exceed 250K until passing BRRRO.

NOTE: Do not exceed 250K until passing CLAWW.

TAKEOFF MINIMUMS:

Rwy 4L, 14, 15L, 32, 33R: NA-ATC.

Rwy 4R, 9, 15R, 22R, 33L: Standard with minimum climb of 500' per NM to 520.

Rwy 22L: 300-1 with minimum climb of 500' per NM to 520, or standard with minimum climb of 500' per NM to 520 if tower reports no tall vessels in the departure area.

Rwy 27: Standard with minimum climb of 500' per NM to 1300.

NANTUCKET
ACK



NOTE: Chart not to scale.

(NARRATIVE ON FOLLOWING PAGE)

BRUWN SIX DEPARTURE (RNAV)

(BRUWN6.BRUWN) 02DEC21

BOSTON, MASSACHUSETTS

GENERAL EDWARD LAWRENCE LOGAN INTL (BOS)

NE-1, 01 DEC 2022 to 29 DEC 2022

NE-1, 01 DEC 2022 to 29 DEC 2022



DEPARTURE ROUTE DESCRIPTION

TAKEOFF RUNWAY 4R: Climb on heading 035° to 520, then direct NHANT, then on track 091° to cross HURBE at or above 4000, thence....

TAKEOFF RUNWAY 9: Climb on heading 092° to 520, then direct CLAWW at or above 4000 at or below 250K, thence....

TAKEOFF RUNWAY 15R: Climb on heading 150° to intercept course 119° to TASKT, do not exceed 210K until 520' MSL, thence....

TAKEOFF RUNWAY 22L: Climb on heading 215° to intercept course 139° to TJAYY, do not exceed 210K until 520' MSL, thence....

TAKEOFF RUNWAY 22R: Climb on heading 215° to intercept course 143° to TJAYY, do not exceed 210K until 520' MSL, thence....

TAKEOFF RUNWAY 27: Climb on heading 272° to intercept course 234° to KIRAA, thence....

TAKEOFF RUNWAY 33L: Climb on heading 330° to intercept course 313° to TEKKE, then on track 250° to cross COUSY at or above 5000, thence....

....on depicted route to BRUWN. Maintain 5000. Expect clearance to filed altitude/flight level within 10 minutes after departure.

NE-1, 01 DEC 2022 to 29 DEC 2022

NE-1, 01 DEC 2022 to 29 DEC 2022