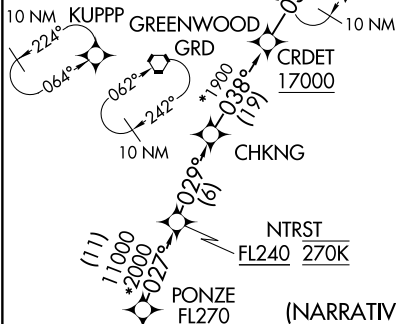


CHARLOTTE, NORTH CAROLINA

[illegible]

BLNCE
9000 210K
Landing North Rwy 5, 36L/C/R:
Expect RADAR vectors to
final approach course after BLNCE.



NOTE: Chart not to scale.

CHARLOTTE, NORTH CAROLINA
CHARLOTTE/DOUGLAS INTL (CLT)

ARRIVAL ROUTE DESCRIPTION

PONZE TRANSITION (PONZE.BANKR2)

LANDING CLT:

From BANKR on track 040° to cross DEBBT between 12000 and FL210 and at 250K.

LANDING RWY 5: From DEBBT on track 070° to cross CONTR at or above 11000, then on track 070° to cross OPALS between 10000 and 12000, then on track 070° to cross BLNCE at 9000 and at 210K, then on heading 018°. Expect RADAR vectors to final approach course.

LANDING RWYS 18L/C/R: From DEBBT on track 040° to cross ROBRR between 12000 and 16000, then on track 050° to cross FOBAR between 12000 and 14000, then on track 050° to cross DEELX at 12000 and at 250K, then on track 050° to STKUP, then on track 003° to DOSBE, then on track 003° to AAIRE, then on track 003° to JRDEN, then on track 003°. Expect RADAR vectors to final approach course.

LANDING RWY 23: From DEBBT on track 040° to cross ROBRR between 12000 and 16000, then on track 050° to cross FOBAR between 12000 and 14000, then on track 050° to cross DEELX at 12000 and at 250K, then on track 050° to STKUP, then on track 003° to DOSBE, then on track 021° to RRIKK, then on track 024° to FLAIR, then on track 056° to WOOOO, then on track 056°. Expect RADAR vectors to final approach course.

LANDING RWYS 36L/C/R: From DEBBT on track 070° to cross CONTR at or above 11000, then on track 070° to cross OPALS between 10000 and 12000, then on track 070° to cross BLNCE at 9000 and at 210K, then on heading 090°. Expect RADAR vectors to final approach course.

LOST COMMUNICATIONS:

RWYS 18L/C/R: After JRDEN turn right direct CLT VOR/DME and hold maintain 12000.

RWY 23: After WOOOO turn right direct CLT VOR/DME and hold maintain 12000.