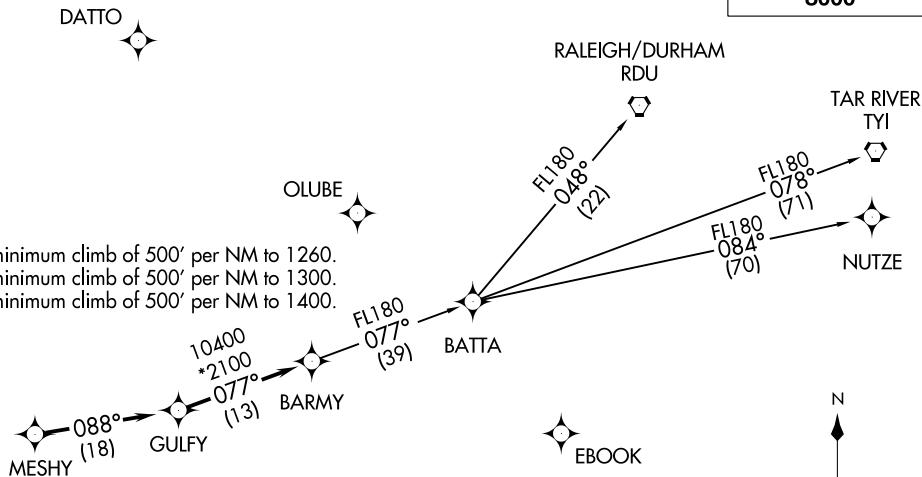


CHARLOTTE, NORTH CAROLINA
CHARLOTTE/DOUGLAS INTL (CLT)

Rwys 18C/L/R, 23, 36C/R: Standard with minimum climb of 500' per NM to 1260.
 Rwy 5: Standard with minimum climb of 500' per NM to 1300.
 Rwy 36L: Standard with minimum climb of 500' per NM to 1400.



NOTE: For turbojets only.
NOTE: DME/DME/IRU or GPS required.
NOTE: RNAV 1.
NOTE: RADAR required.
NOTE: If unable to accept climb rates, advise ATC on initial contact.
NOTE: Transponder code will be issued via PDC or Charlotte CLNC DEL.
NOTE: Accelerate to 250K, if unable advise ATC. Upon reaching 10000 MSL, accelerate to and maintain 280K, if unable advise ATC.

NOTE: Chart not to scale.

CHARLOTTE/DOUGLAS INTL (CLT)
CHARLOTTE, NORTH CAROLINA



DEPARTURE ROUTE DESCRIPTION
SEE ADDITIONAL REQUIREMENTS ON AAUP

TAKEOFF RWY 5: Climb heading 055° to 1260, then on heading 055° or as assigned by ATC, expect RADAR vectors to MESHY, thence. . . .

TAKEOFF RWYS 18L/C: Climb heading 183° to 1260, then on heading 183° or as assigned by ATC, expect RADAR vectors to MESHY, thence. . . .

TAKEOFF RWY 18R: Climb heading 183° to 1260, then on heading 200° or as assigned by ATC, expect RADAR vectors to MESHY, thence. . . .

TAKEOFF RWY 23: Climb heading 235° to 1260, then on heading 235° or as assigned by ATC, expect RADAR vectors to MESHY, thence. . . .

TAKEOFF RWY 36C: Climb heading 003° to 1260, then on heading 330° or as assigned by ATC, expect RADAR vectors to MESHY, thence. . . .

TAKEOFF RWY 36L: Climb heading 003° to 1260, then on heading 315° or as assigned by ATC, expect RADAR vectors to MESHY, thence. . . .

TAKEOFF RWY 36R: Climb heading 003° to 1260, then on heading 025° or as assigned by ATC, expect RADAR vectors to MESHY, thence. . . .

. . . .on depicted route to BARMY, then on assigned transition. Maintain 8000.
Expect clearance to filed altitude within 10 minutes after departure.

NUTZE TRANSITION (BARMY4.NUTZE)
RALEIGH/DURHAM TRANSITION (BARMY4.RDU)
TAR RIVER TRANSITION (BARMY4.TYI)

SE-2, 01 DEC 2022 to 29 DEC 2022

SE-2, 01 DEC 2022 to 29 DEC 2022