

(MRS HH2.MRSHH) 21224

# MRS HH TWO DEPARTURE (RNAV)

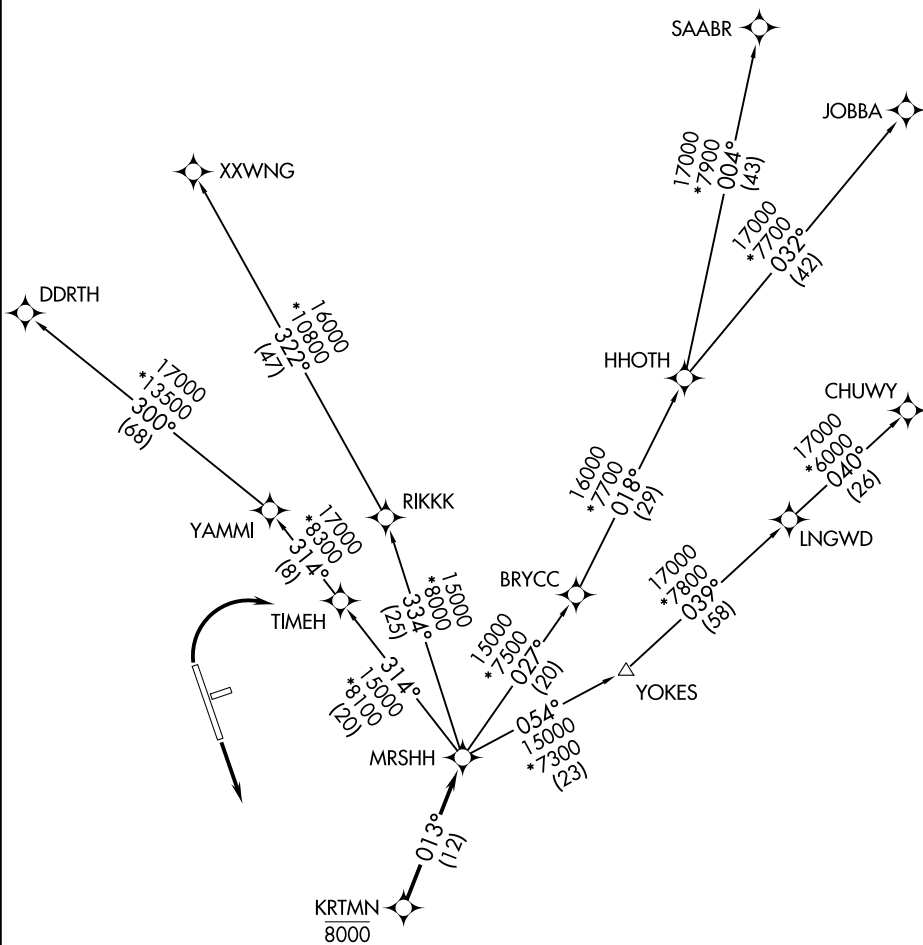
NORTHERN COLORADO RGNL (FNL)

AL-5677 (FAA)

FORT COLLINS/LOVELAND, COLORADO

CLNC DEL  
120.25  
DENVER DEP CON  
134.85 251.125

**TOP ALTITUDE:  
FL230**



SW-1, 01 DEC 2022 to 29 DEC 2022

SW-1, 01 DEC 2022 to 29 DEC 2022

### TAKEOFF MINIMUMS

Rwys 6, 24: NA.  
Rwys 15, 33: Standard.

- NOTE: DME/DME/IRU or GPS required.
- NOTE: RNAV 1.
- NOTE: Turbojets only.
- NOTE: RADAR required.

NOTE: Chart not to scale.

(NARRATIVE ON FOLLOWING PAGE)

# MRS HH TWO DEPARTURE (RNAV)

(MRS HH2.MRSHH) 31DEC20

FORT COLLINS/LOVELAND, COLORADO  
NORTHERN COLORADO RGNL (FNL)



DEPARTURE ROUTE DESCRIPTION

TAKEOFF RUNWAY 15: Climb on a heading between 350° CW 180° as assigned by ATC. Thence. . . .

TAKEOFF RUNWAY 33: Climbing right turn on a heading between 350° CW 150° as assigned by ATC. Thence. . . .

. . . .expect RADAR vectors to cross KRTMN at 8000 then on track 013° to MRS HH, then on (transition) maintain FL230 or filed lower altitude. Expect higher filed altitude ten minutes after departure.

CHUWY TRANSITION (MRS HH2.CHUWY)

DDRTH TRANSITION (MRS HH2.DDRTH)

JOBBA TRANSITION (MRS HH2.JOBBA)

SAABR TRANSITION (MRS HH2.SAABR)

XXWNG TRANSITION (MRS HH2.XXWNG)

SW-1, 01 DEC 2022 to 29 DEC 2022

SW-1, 01 DEC 2022 to 29 DEC 2022