

PLAINS ONE DEPARTURE
(PLAIN1.DEN) 30/ANZ0

PLAINS ONE DEPARTURE
21/224

AL-5677 (FAA)

NORTHERN COLORADO RGNI (FNTL)
FORT COLLINS/LOVELAND, COLORADO

DENVER DEP CON
134.85 251.125

**TOP ALTITUDE:
ASSIGNED BY ATC**

AKRON
114.4 AKO
Chan 91
N40°09.33'-W103°10.78'
L-10, H-5

ASHBY
N40°19.03'
W102°00.09'
L-10, H-5
V8
6500
066°
(50)

HAYES CENTER
117.7 HCT
Chan 124
N40°27.24'-W100°55.41'
L-10, H-5
R-250

EEONS
N40°01.29'
W103°46.18'

9000
065°
(28)
R-241

V8
6500
066°
(55)

MOCA for MC COOK
transition only.

FL210
*9000
073°
(66)
R-253

MC COOK
115.3 MCK
Chan 100
N40°12.23'-W100°35.65'
L-10, H-5

FL210
*9000
076°
(43)

EMMYS
N39°53.03'
W103°44.09'

FL210
*9000
076°
(64)

TEKMY
N39°58.57'
W102°21.21'
107

FL210
*9000
073°
(16)

FL210
*9000
073°
(66)

DENVER
117.9 DEN
Chan 126
N39°48.75'-W104°39.64'

8000
087°
(42)

EXTAN
N39°44.60'
W103°45.43'

18000
*7000
084°
(56)

18000
*7000
084°
(56)

CABET
N39°35.65'
W102°00.65'
L-10, H-5

7000
092°
(73)
R-298
R-273

GOODLAND
115.1 GLD
Chan 98
N39°23.27'-W101°41.54'
L-10, H-5

EPKEE
N39°35.57'
W103.47.97'

THURMAN
112.9 TXC
Chan 76
N39°41.90'-W103°12.90'
L-10, H-5

FL230
*8100
100°
(88)

WEEDS
N39°06.72'
W102°00.78'

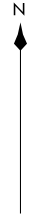
7000
092°
(73)

GOODLAND
115.1 GLD
Chan 98
N39°23.27'-W101°41.54'
L-10, H-5

130

GARDEN CITY
113.3 GCK
Chan 80
N37°55.14'-W100°43.50'
L-10-15, H-5

FL230
*6300
129°
(94)
R-308



TAKEOFF MINIMUMS
Rwys 6, 24: NA - VFR Runway.
Rwys 15, 33: Standard.

NOTE: RADAR required.

NOTE: Chart not to scale.

(NARRATIVE ON FOLLOWING PAGE)

FORT COLLINS/LOVELAND, COLORADO
NORTHERN COLORADO RGNI (FNTL)



DEPARTURE ROUTE DESCRIPTION

TAKEOFF RUNWAY 15: Climb to assigned altitude and heading between 180° CCW 350° from end of runway. Thence. . . .

TAKEOFF RUNWAY 33: Climbing right turn to assigned altitude and heading between 350° CW 150° from DER. Thence. . . .

. . . .RADAR vectors to assigned route. Expect filed altitude 10 minutes after departure.

LOST COMMUNICATIONS: If no transmissions are received within one minute after departure, maintain assigned heading until 7000 feet, then climb to filed altitude via direct DEN VOR/DME, thence via assigned transition. If filed altitude is above 10000 feet, cross DEN VOR/DME at or above 11000 feet.

AKRON TRANSITION (PLAIN1.AKO): From over DEN VOR/DME on DEN R-065 and AKO R-241 to AKO VOR/DME.

ASHBY TRANSITION (PLAIN1.ASHBY): From over DEN VOR/DME on DEN R-065 and AKO R-241 to AKO VOR/DME, then on AKO R-066 and HCT R-250 to ASHBY.

BELKE TRANSITION (PLAIN1.BELKE): From over DEN VOR/DME on DEN R-076 and MCK R-253 to BELKE INT.

CABET TRANSITION (PLAIN1.CABET): From over DEN VOR/DME on DEN R-087 and TXC R-264 to TXC VORTAC, then on TXC R-084 to CABET.

GARDEN CITY TRANSITION (PLAIN1.GCK): From over DEN VOR/DME on DEN R-100 and GCK R-309 to GCK VORTAC.

GOODLAND TRANSITION (PLAIN1.GLD): From over DEN VOR/DME on DEN R-087 and TXC R-264 to TXC VORTAC, then on TXC R-092 and GLD R-273 to GLD VORTAC.

HAYES CENTER TRANSITION (PLAIN1.HCT): From over DEN VOR/DME on DEN R-065 and AKO R-241 to AKO VOR/DME, then on AKO R-066 and HCT R-250 to HCT VORTAC.

MCCOOK TRANSITION (PLAIN1.MCK): From over DEN VOR/DME on DEN R-076 to TEKMY, then on MCK R-253 to MCK VOR/DME.

THURMAN TRANSITION (PLAIN1.TXC): From over DEN VOR/DME on DEN R-087 and TXC R-264 to TXC VORTAC.

WEEDS TRANSITION (PLAIN1.WEEDS): From over DEN VOR/DME on DEN R-100 to WEEDS.

SW-1, 01 DEC 2022 to 29 DEC 2022

SW-1, 01 DEC 2022 to 29 DEC 2022