

ROCKIES FIVE DEPARTURE
(ROCK5, DEN) 26MAR20

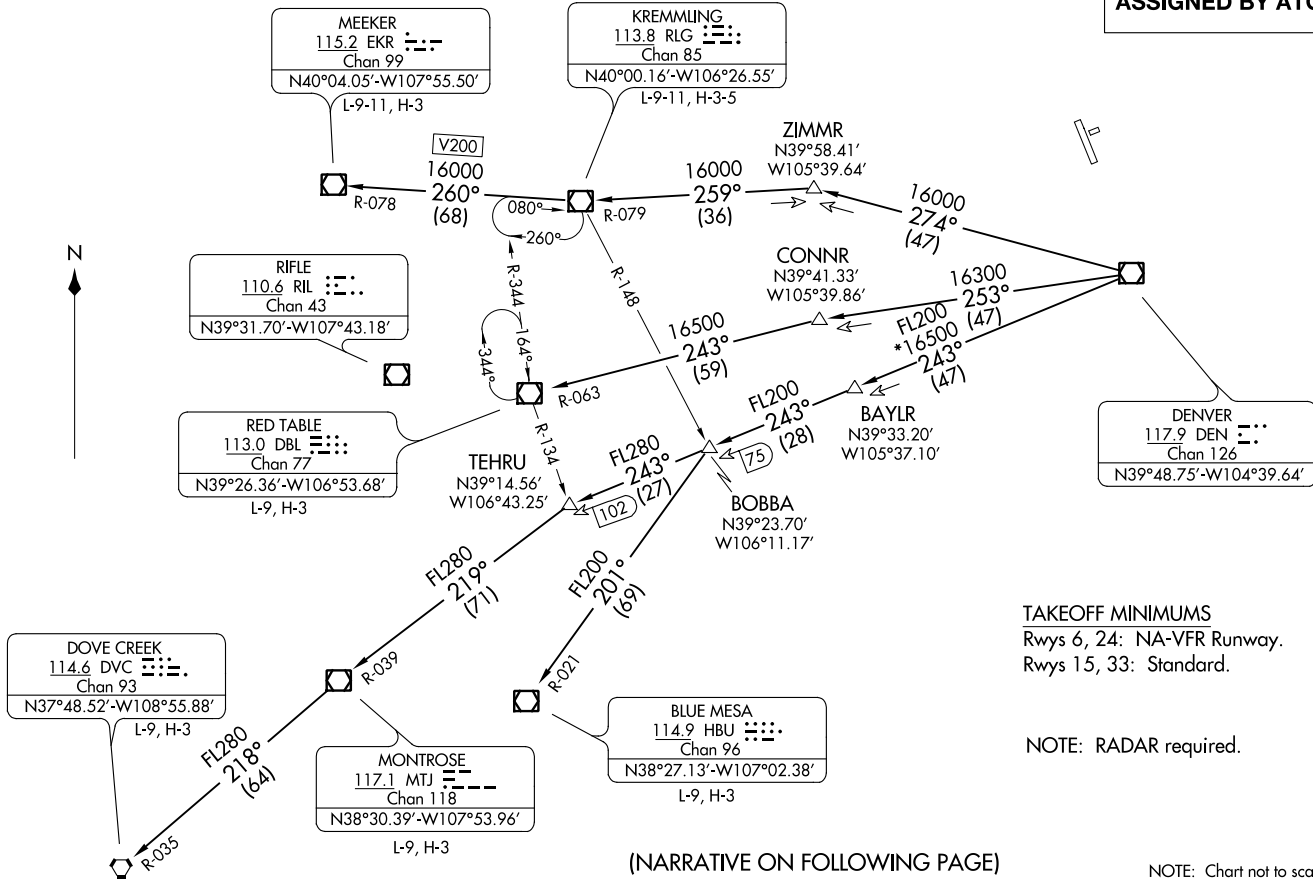
(ROCK5, DEN) 20086
ROCKIES FIVE DEPARTURE

AL-5677 (FAA)

NORTHERN COLORADO RGNL (FNL)
FORT COLLINS/LOVELAND, COLORADO

DENVER DEP CON
134.85 251.125

TOP ALTITUDE:
ASSIGNED BY ATC



TAKEOFF MINIMUMS
Rwys 6, 24: NA-VFR Runway.
Rwys 15, 33: Standard.

NOTE: RADAR required.

(NARRATIVE ON FOLLOWING PAGE)

NOTE: Chart not to scale.

FORT COLLINS/LOVELAND, COLORADO
NORTHERN COLORADO RGNL (FNL)



DEPARTURE ROUTE DESCRIPTION

TAKEOFF RUNWAY 15: Climb to assigned altitude and heading between 180° CCW 350° from end of runway, thence. . . .

TAKEOFF RUNWAY 33: Climbing right turn to assigned altitude and heading between 350° CW 150° from DER, thence. . . .

. . . .RADAR vectors to assigned route. Expect filed altitude 10 minutes after departure.

LOST COMMUNICATIONS: If no transmissions are received within one minute after departure, maintain assigned heading until 7000 feet, then climb to filed altitude direct DEN VOR/DME, then on assigned transition. If filed altitude is above 10000 feet, cross DEN VOR/DME at or above 11000 feet.

BLUE MESA TRANSITION (ROCKI5.HBU): From over DEN VOR/DME on DEN R-243 and HBU R-021 to HBU VOR/DME.

DOVE CREEK TRANSITION (ROCKI5.DVC): From over DEN VOR/DME on DEN R-243 and MTJ R-039 to MTJ VOR/DME, then on MTJ R-218 and DVC R-035 to DVC VORTAC.

KREMMLING TRANSITION (ROCKI5.RLG): From over DEN VOR/DME on DEN R-274 and RLG R-079 to RLG VOR/DME.

MEEKER TRANSITION (ROCKI5.EKR): From over DEN VOR/DME on DEN R-274 and RLG R-079 to RLG VOR/DME, then on RLG R-260 and EKR R-078 to EKR VOR/DME.

MONTROSE TRANSITION (ROCKI5.MTJ): From over DEN VOR/DME on DEN R-243 and MTJ R-039 to MTJ VOR/DME.

RED TABLE TRANSITION (ROCKI5.DBL): From over DEN VOR/DME on DEN R-253 and DBL R-063 to DBL VOR/DME.

SW-1, 01 DEC 2022 to 29 DEC 2022

SW-1, 01 DEC 2022 to 29 DEC 2022