

VOR/DME GLL <b>114.2</b> Chan <b>89</b>	APP CRS <b>248°</b>	Rwy Idg TDZE Apt Elev <b>N/A</b> <b>5016</b>
---	------------------------	---

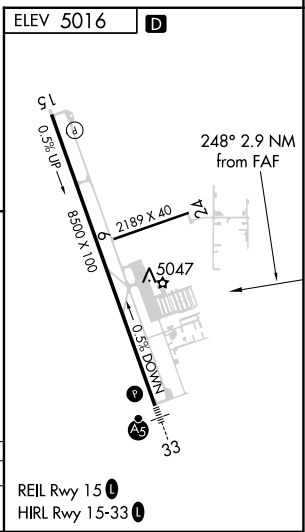
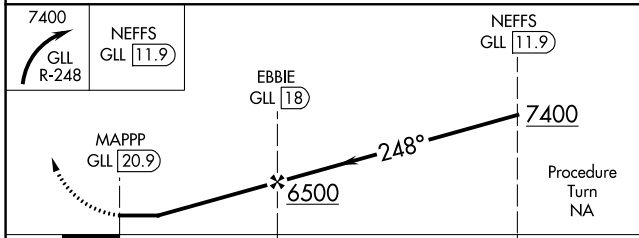
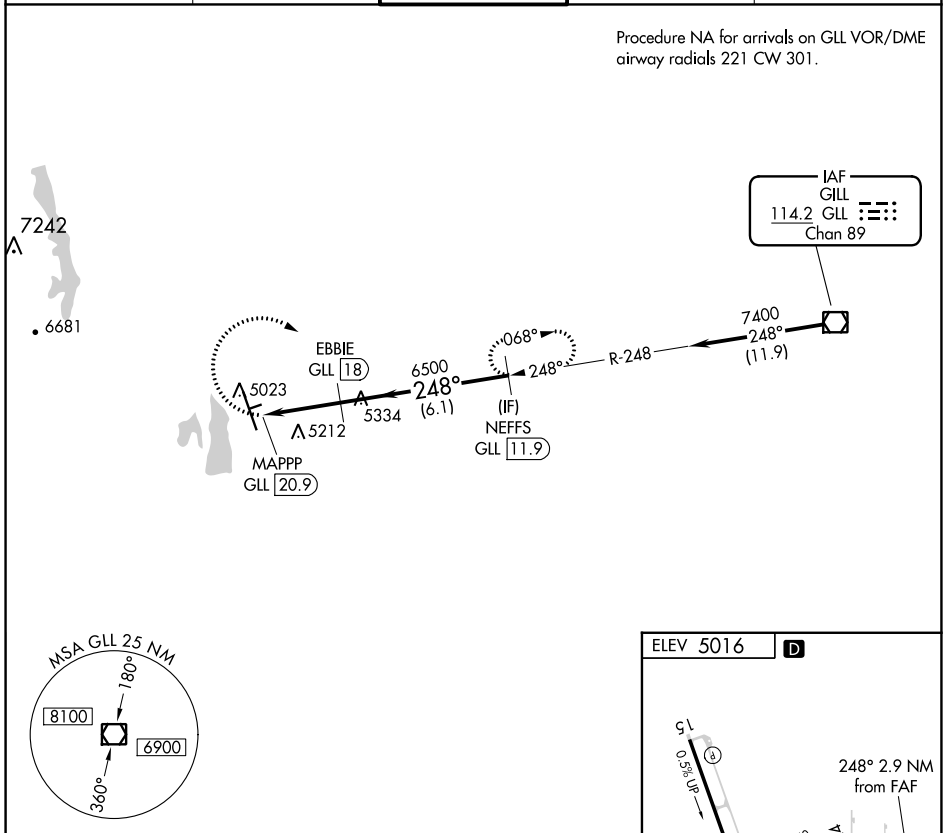
**VOR-A**  
NORTHERN COLORADO RGNL (FNL)

**⚠** Circling to Rwy 6/24 NA at night.  
**⚠** When local altimeter setting not received, use Denver Intl altimeter setting and increase all MDA 160 feet and Cat C/D visibility ½ SM. DME required.

**MISSED APPROACH:** Climbing right turn to 7400 via GLL VOR/DME R-248 to NEFFS/GLL 11.9 DME and hold.

ATIS <b>135.075</b>	DENVER APP CON <b>134.85 251.125</b>	<b>NOCO TOWER*</b> <b>118.4</b> (CTAF) <b>⓪</b>	GND CON <b>121.65</b>	CLNC DEL <b>120.25</b> (When twr closed)
------------------------	---	--	--------------------------	--

Procedure NA for arrivals on GLL VOR/DME airway radials 221 CW 301.



CATEGORY	A	B	C	D
<b>ⓐ</b> CIRCLING	5500-1 484 (500-1)	5580-1 564 (600-1)	5580-1½ 564 (600-1½)	5760-2½ 744 (800-2½)

SW-1, 01 DEC 2022 to 29 DEC 2022

SW-1, 01 DEC 2022 to 29 DEC 2022