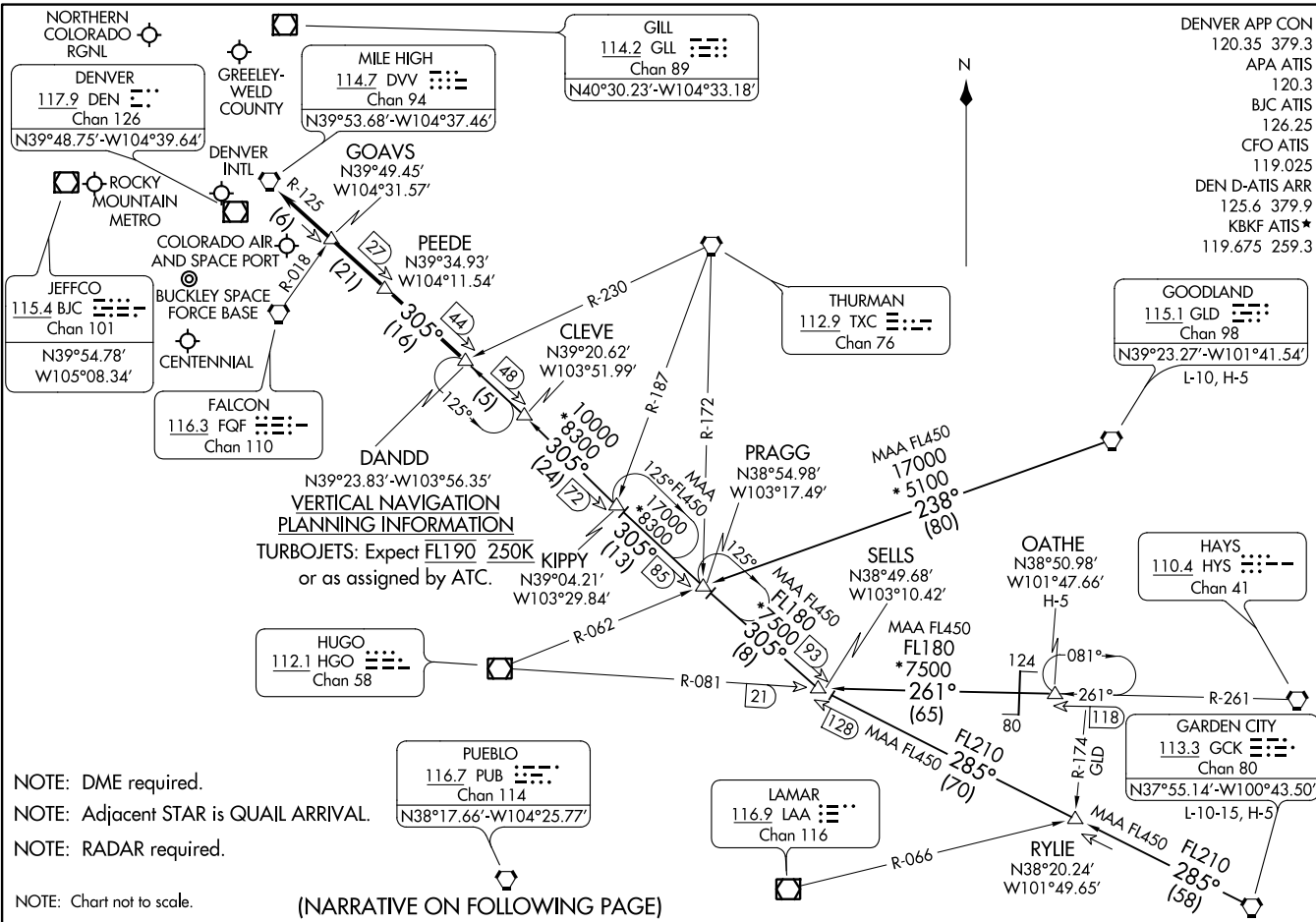


DANDD ONE ARRIVAL
(DANDD.DANDD1) 30JAN20

(DANDD.DANDD1) 22307
DANDD ONE ARRIVAL

AL-9077 (FAAN)

DENVER, COLORADO



- DENVER APP CON 120.35 379.3
- APA ATIS 120.3
- BJC ATIS 126.25
- CFO ATIS 119.025
- DEN D-ATIS ARR 125.6 379.9
- KBKF ATIS* 119.675 259.3

DANDD
 N39°23.83'-W103°56.35'
VERTICAL NAVIGATION PLANNING INFORMATION
 TURBOJET: Expect FL190 250K
 or as assigned by ATC.

- NOTE: DME required.
- NOTE: Adjacent STAR is QUAIL ARRIVAL.
- NOTE: RADAR required.
- NOTE: Chart not to scale.

(NARRATIVE ON FOLLOWING PAGE)

DENVER, COLORADO

ARRIVAL ROUTE DESCRIPTION

GARDEN CITY TRANSITION (GCK.DANDD1): From over GCK VORTAC on GCK R-285 and DVV R-125 to DANDD. Thence. . . .

GOODLAND TRANSITION (GLD.DANDD1): From over GLD VORTAC on GLD R-238 and DVV R-125 to DANDD. Thence. . . .

OATHE TRANSITION (OATHE.DANDD1): From over OATHE on HYS R-261 and HGO R-081 to SELLS, then on DVV R-125 to DANDD. Thence. . . .

. . . .from over DANDD on DVV R-125 to DVV VORTAC. Expect RADAR vectors to the final approach course at or before DVV VORTAC.

SW-1, 01 DEC 2022 to 29 DEC 2022

SW-1, 01 DEC 2022 to 29 DEC 2022