

# LARKS TWO ARRIVAL

AL-9077 (FAA)

DENVER, COLORADO

DENVER APP CON  
 120.35 379.3  
 APA ATIS  
 120.3  
 BJC ATIS  
 126.25  
 CFO ATIS  
 119.025  
 DEN D-ATIS ARR  
 125.6 379.9  
 KBKF ATIS \*  
 119.675 259.3

GILL  
 114.2 GLL  
 Chan 89  
 N40°30.23'-W104°33.18'

DENVER  
 117.9 DEN  
 Chan 126  
 N39°48.75'-W104°39.64'

JEFFCO  
 115.4 BJC  
 Chan 101

CENTENNIAL  
 108.2 APA  
 N39°34.51'-W104°50.71'

RED TABLE  
 113.0 DBL  
 Chan 77

LARKS  
 N39°15.44'-W105°18.31'  
**TURBOJET VERTICAL NAVIGATION**  
**PLANNING INFORMATION**  
 Expect 17000 250K  
 or as assigned by ATC.

PAYDD  
 N39°24.10'  
 W105°04.73'

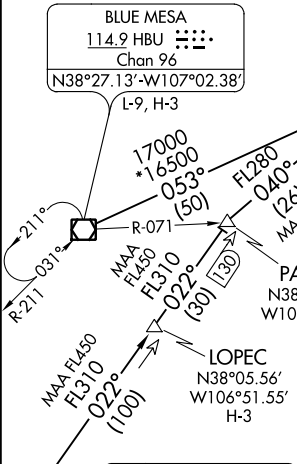
TERRO  
 N38°53.47'  
 W105°52.38'

MURFE  
 N39°08.29'  
 W105°29.47'

FALCON  
 116.3 FQF  
 Chan 110  
 N39°41.41'  
 W104°37.26'

BLUE MESA  
 114.9 HBU  
 Chan 96  
 N38°27.13'-W107°02.38'

BLACK FOREST  
 112.5 BRK  
 Chan 72



NOTE: Adjacent STAR is POWDR ARRIVAL.  
 NOTE: RADAR required.  
 NOTE: Chart not to scale.

(NARRATIVE ON FOLLOWING PAGE)

# LARKS TWO ARRIVAL

DENVER, COLORADO

SW-1, 01 DEC 2022 to 29 DEC 2022

SW-1, 01 DEC 2022 to 29 DEC 2022

ARRIVAL ROUTE DESCRIPTION

ALAMOSA TRANSITION (ALS.LARKS2): From over ALS VORTAC on ALS R-339 and FQF R-220 to LARKS. Thence. . . .

BLUE MESA TRANSITION (HBU.LARKS2): From over HBU VOR/DME on HBU R-053 and FQF R-220 to LARKS. Thence. . . .

LOPEC TRANSITION (LOPEC.LARKS2): From over LOPEC on RSK R-022 and FQF R-220 to LARKS. Thence. . . .

PUEBLO TRANSITION (PUB.LARKS2): From over PUB VORTAC on PUB R-267 to KANON; then on ALS R-339 and FQF R-220 to LARKS. Thence. . . .

RATTLESNAKE TRANSITION (RSK.LARKS2): From over RSK VORTAC on RSK R-022 and FQF R-220 to LARKS. Thence. . . .

. . . .from over LARKS on FQF R-220 to FALCON (FQF) VORTAC. Expect RADAR vectors to the final approach course at or before FALCON (FQF) VORTAC.

SW-1, 01 DEC 2022 to 29 DEC 2022

SW-1, 01 DEC 2022 to 29 DEC 2022