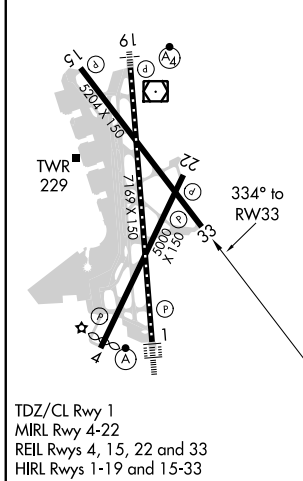
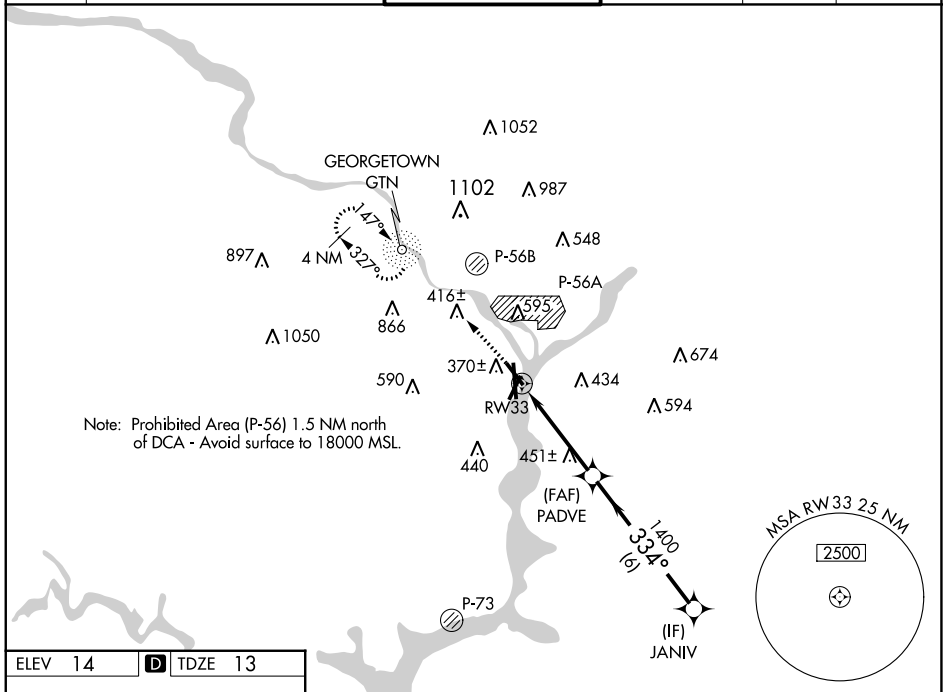


WAAS CH <b>90123</b> <b>W33A</b>	APP CRS <b>334°</b>	Rwy Idg <b>5204</b> TDZE <b>13</b> Apt Elev <b>14</b>
--	------------------------	---

# RNAV (GPS) RWY 33

RONALD REAGAN WASHINGTON NTL (DCA)

RNP APCH.		MISSED APPROACH: Climb to 2200 direct GTN NDB and hold, continue climb-in-hold to 2200.			
Circling NA northeast of Rwy 15-33. For uncompensated Baro-VNAV systems, LNAV/VNAV NA below -11°C or above 54°C.		D-ATIS <b>132.65</b>		POTOMAC APP CON <b>119.85 239.25</b> (WEST/SOUTH) <b>124.2 360.8</b> (EAST)	
WASHINGTON TOWER <b>119.1 257.6</b>		GND CON <b>121.7 257.6</b>		CLNC DEL <b>128.25</b>	
				CPDLC	



2200	GTN	VGSi and RNAV glidepath not coincident (VGSi Angle 3.00/TCH 37).			
* LNAV only.		* 2.1 NM to RWY 33		JANIV	
RWY 33		PADVE	1400	2100	
2.1 NM		6 NM		GP 3.00° TCH 55	
CATEGORY	A	B	C	D	
LPV DA	287-7/8		274 (300-7/8)		
LNAV/VNAV DA	609-2		596 (600-2)		
LNAV MDA	720-1	707 (800-1)		720-2	707 (800-2)
<b>C</b> CIRCLING	720-1	706 (800-1)		840-2 1/2	900-3
				826 (900-2 1/2)	886 (900-3)