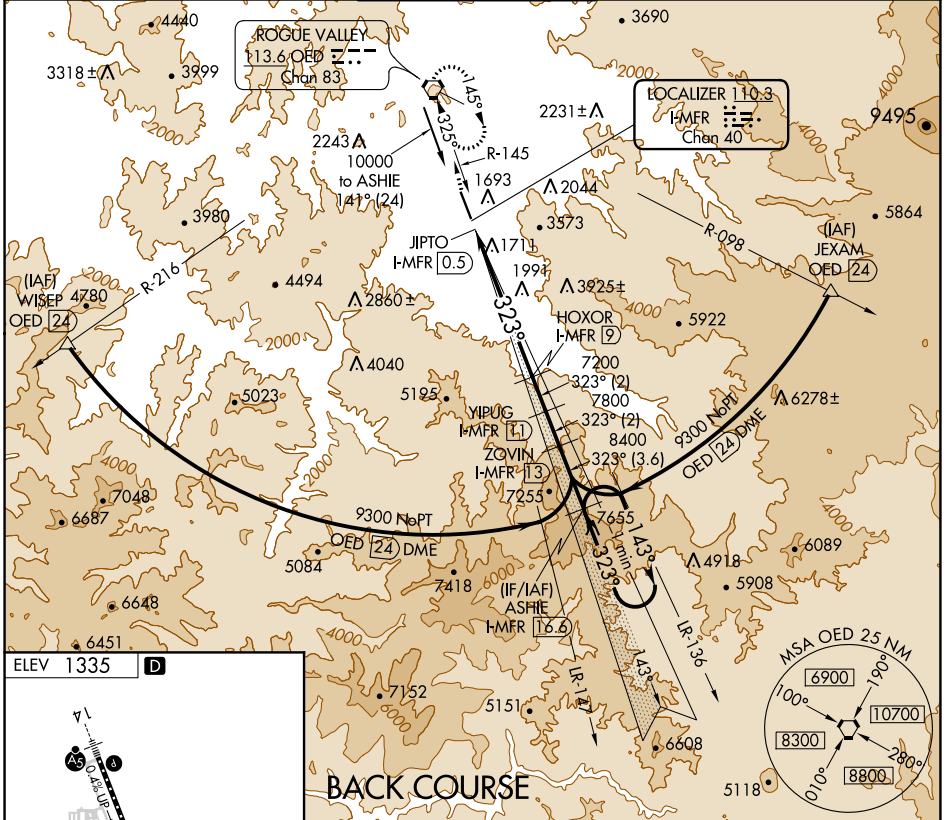


LOC/DME I-MFR 110.3 Chan 40	APP CRS 323°	Rwy Idg TDZE Apt Elev 1335	N/A N/A
--	------------------------	--	--------------------------

LOC/DME BC-B
ROGUE VALLEY INTL-MEDFORD (MFR)

⚠ Visibility reduction by helicopters NA. Circling NA for Cats C and D northeast of Rwy 14-32.
⚠ -3°C
 MISSED APPROACH: Climb to 7600 direct OED VORTAC and hold, continue climb-in-hold to 7600.

ATIS 127.25	CASCADE APP CON * 124.3 379.9	MEDFORD TOWER * 119.4 (CTAF) 257.8	GND CON 121.8	UNICOM 122.95
-----------------------	---	--	-------------------------	-------------------------



ELEV 1335 **D**

CL Rwy 14-32 **Ⓛ**
 TDZ/CL Rwy 14 **Ⓛ**
 REIL Rwy 32 **Ⓛ**
 HIRL Rwy 14-32 **Ⓛ**

BACK COURSE

7600 OED VSGI and descent angles not coincident (VSGI Angle 3.00/TCH 50). ASHIE I-MFR 16.6 One Minute Holding Pattern

Disregard GS indications. YIPUG I-MFR 13 ZOVIN I-MFR 16.6

JIPTO I-MFR 0.5 HOXOR I-MFR 9

7200 7800 8400 9300

143° → 9300
 ← 323°

Use I-MFR DME when on the localizer course.

0.7 8.5 NM 2 NM 2 NM 3.6 NM

CATEGORY	A	B	C	D
CIRCLING	3540-1¼ 2205 (2300-1¼)	3540-1½ 2205 (2300-1½)	3540-3	2205 (2300-3)

NW-1, 26 JAN 2023 to 23 FEB 2023

NW-1, 26 JAN 2023 to 23 FEB 2023