

APP CRS 143°	Rwy Idg TDZE Apt Elev	8800 1303 1335
------------------------	-----------------------------	---

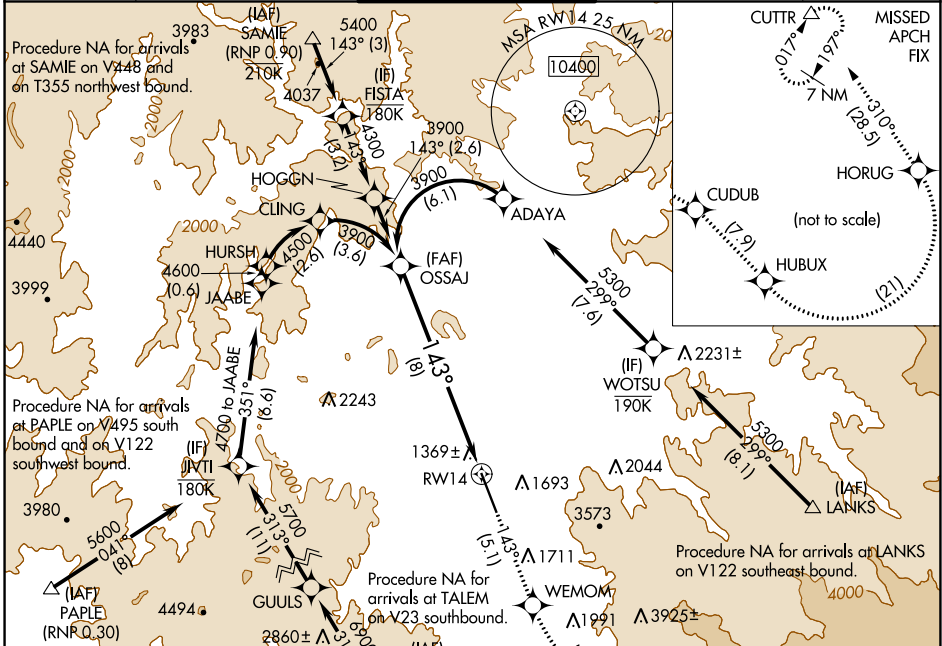
RNAV (RNP) Z RWY 14

ROGUE VALLEY INTL-MEDFORD (MFR)

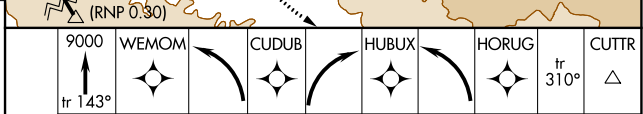
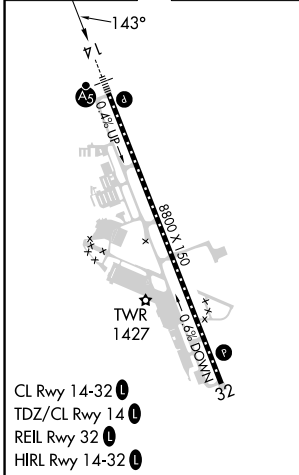
RNP AR APCH-GPS.
 For uncompensated Baro-VNAV systems, procedure NA below -6°C or above 54°C.
 For inop ALS, increase RNP 0.30 all Cnts visibility to 2 SM.

MALSR
 MISSED APPROACH: Climb to 9000 on track 143° to WEMOM, left turn to CUDUB, right turn HUBUX, left turn HORUG, then on track 310° to CUTTR and hold. * Missed approach requires minimum climb of 244 feet per NM to 5000.

ATIS 127.25	CASCADE APP CON * 124.3 379.9	MEDFORD TOWER * 119.4 (CTAF) 257.8	GND CON 121.8	UNICOM 122.95
-----------------------	---	--	-------------------------	-------------------------



ELEV 1335	TDZE 1303
------------------	------------------



OSAJ 3900
 GP 3.00° TCH 58
 VGS1 and RNAV glidepath not coincident (VGS1 Angle 3.00/TCH 73).
 See planview for multiple IF locations.

CATEGORY	A	B	C	D
RNP 0.30 DA*		1759/45	456 (500-7%)	
RNP 0.30 DA		2049-1 ³ / ₄	746 (800-1 ³ / ₄)	

AUTHORIZATION REQUIRED

NW-1, 26 JAN 2023 to 23 FEB 2023

NW-1, 26 JAN 2023 to 23 FEB 2023