

APP CRS	Rwy ldg	8800
143°	TDZE	1303
	Apt Elev	1335


RNAV (GPS) Y RWY 14

ROGUE VALLEY INTL-MEDFORD (MFR)

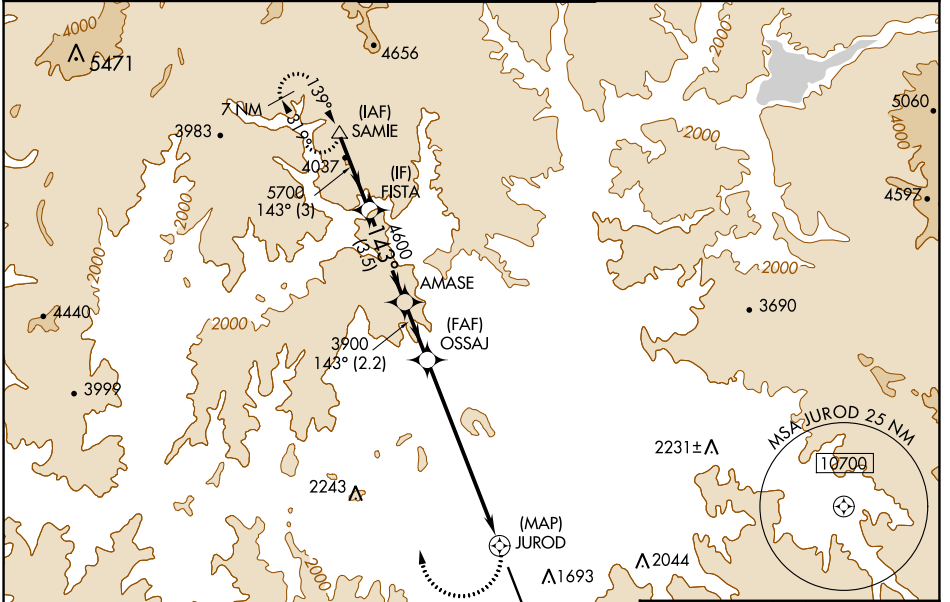
RNP APCH.

⚠ When Medford altimeter setting not received, procedure NA. Inop table does not apply to Cats C and D.

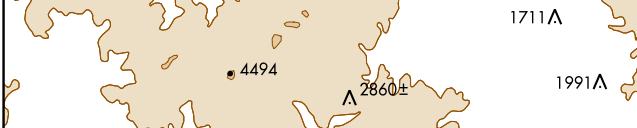
⚠ -3°C

MALS  MISSED APPROACH: Climbing right turn 7000 direct SAMIE and hold, continue climb-in-hold to 7000.
*Missed approach requires minimum climb of 334 feet per NM to 4800.

ATIS 127.25	CASCADE APP CON * 124.3 379.9	MEDFORD TOWER * 119.4 (CTAF) 257.8	GND CON 121.8	UNICOM 122.95
-----------------------	---	--	-------------------------	-------------------------



ELEV 1335	D TDZE 1303
-----------	--------------------



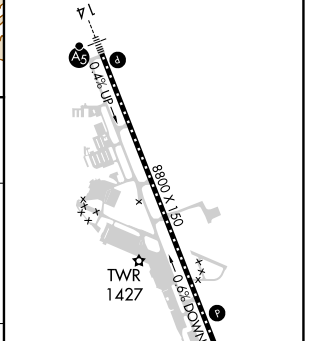
7000	SAMIE
------	-------

VGSI and descent angles not coincident (VGSI Angle 3.00/TCH 73).

7000	SAMIE
5700	FISTA
4600	AMASE
3900	OSSAJ
3000	JUROD

3 NM to JUROD

3.00° TCH 58



CATEGORY	A	B	C	D
LNAV MDA*	2600/40 1297 (1300-¾)	2600/55 1297 (1300-1)	2600-3 1297 (1300-3)	
LNAV MDA	2600/40 1297 (1300-¾)	2600/55 1297 (1300-1)	3320-3 2017 (2000-3)	3460-3 2157 (2200-3)

CL Rwy 14-32 **Ⓛ**
 TDZ/CL Rwy 14 **Ⓛ**
 REIL Rwy 32 **Ⓛ**
 HIRL Rwy 14-32 **Ⓛ**

NW-1, 26 JAN 2023 to 23 FEB 2023

NW-1, 26 JAN 2023 to 23 FEB 2023