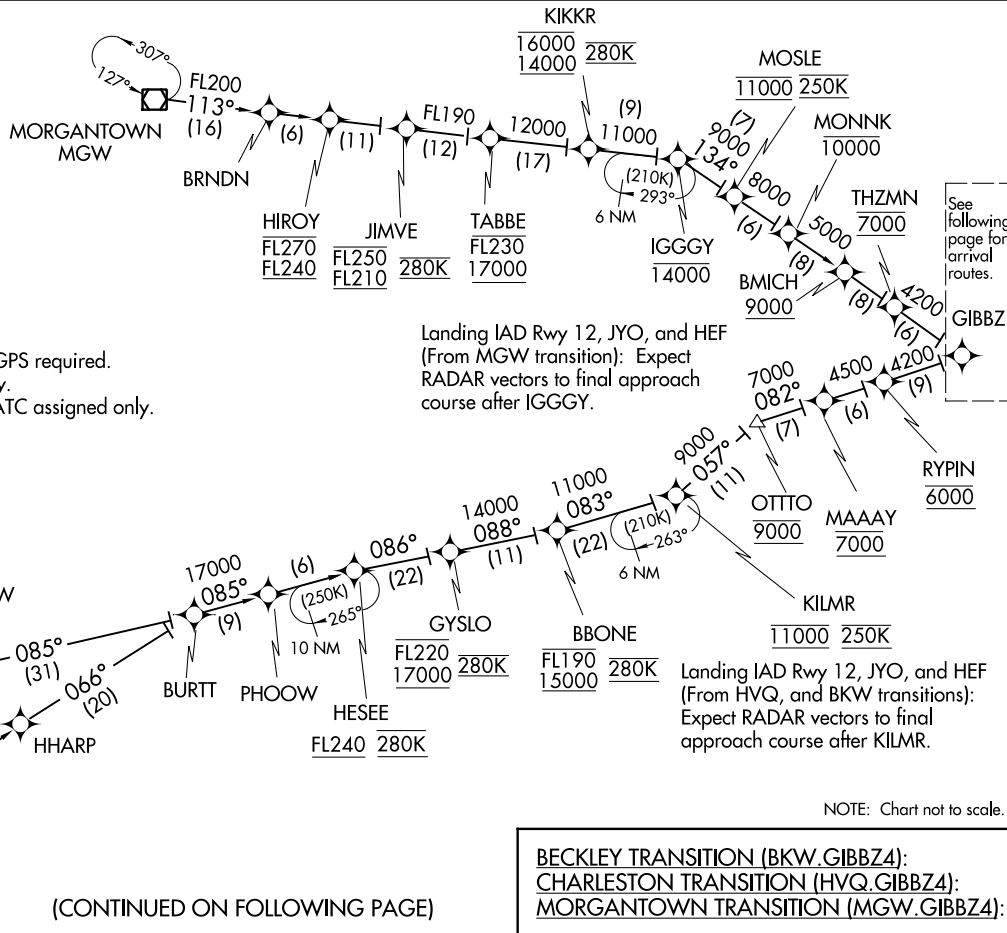


GIBBZ FOUR ARRIVAL (RNAV) Transition Routes  
(GIBBZ.GIBBZ4) 31DEC20

POTOMAC APP CON  
120.45 306.925  
HEF ATIS  
125.175  
IAD D-ATIS  
134.85



- NOTE: RADAR required.
- NOTE: RNAV 1.
- NOTE: DME/DME/IRU or GPS required.
- NOTE: Turbojet aircraft only.
- NOTE: Turboprop aircraft ATC assigned only.



Landing IAD Rwy 12, JYO, and HEF  
(From MGW transition): Expect  
RADAR vectors to final approach  
course after IGGGY.

Landing IAD Rwy 12, JYO, and HEF  
(From HVQ, and BKW transitions):  
Expect RADAR vectors to final  
approach course after KILMR.

See  
following  
page for  
arrival  
routes.

(CONTINUED ON FOLLOWING PAGE)

NOTE: Chart not to scale.

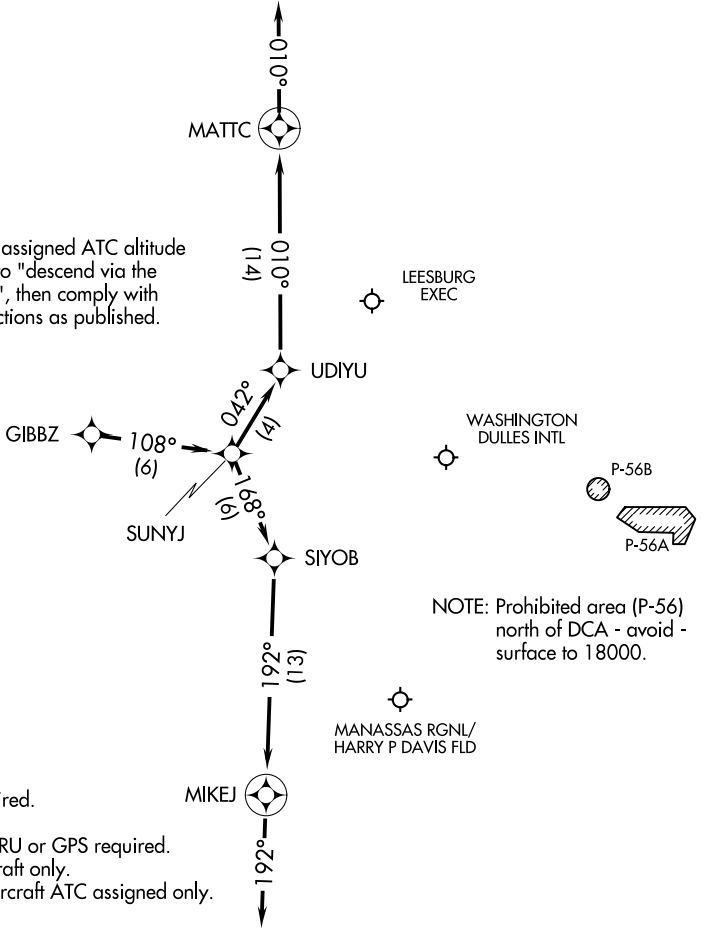
GIBBZ FOUR ARRIVAL (RNAV) Transition Routes  
(GIBBZ.GIBBZ4) 20366  
AL-5100 (FAA)  
WASHINGTON, DC

# GIBBZ FOUR ARRIVAL (RNAV) Arrival Routes

WASHINGTON, DC

POTOMAC APP CON  
120.45 306.925  
HEF ATIS  
125.175  
IAD D-ATIS  
134.85

NOTE: Maintain last assigned ATC altitude until cleared to "descend via the GIBBZ FOUR", then comply with altitude restrictions as published.



- NOTE: RADAR required.
- NOTE: RNAV 1.
- NOTE: DME/DME/IRU or GPS required.
- NOTE: Turbojet aircraft only.
- NOTE: Turboprop aircraft ATC assigned only.

NOTE: Chart not to scale.

## ARRIVAL ROUTE DESCRIPTION

LANDING RUNWAYS 1L/C/R, 30: From GIBBZ on track 108° to SUNYJ, then on track 168° to SIYOB, then on track 192° to MIKEJ, then on track 192°. Expect radar vectors to final approach course.

LANDING RUNWAYS 19L/C/R: From GIBBZ on track 108° to SUNYJ, then on track 042° to UDIYU, then on track 010° to MATTC, then on track 010°. Expect radar vectors to final approach course.

NE-3, 26 JAN 2023 to 23 FEB 2023

NE-3, 26 JAN 2023 to 23 FEB 2023