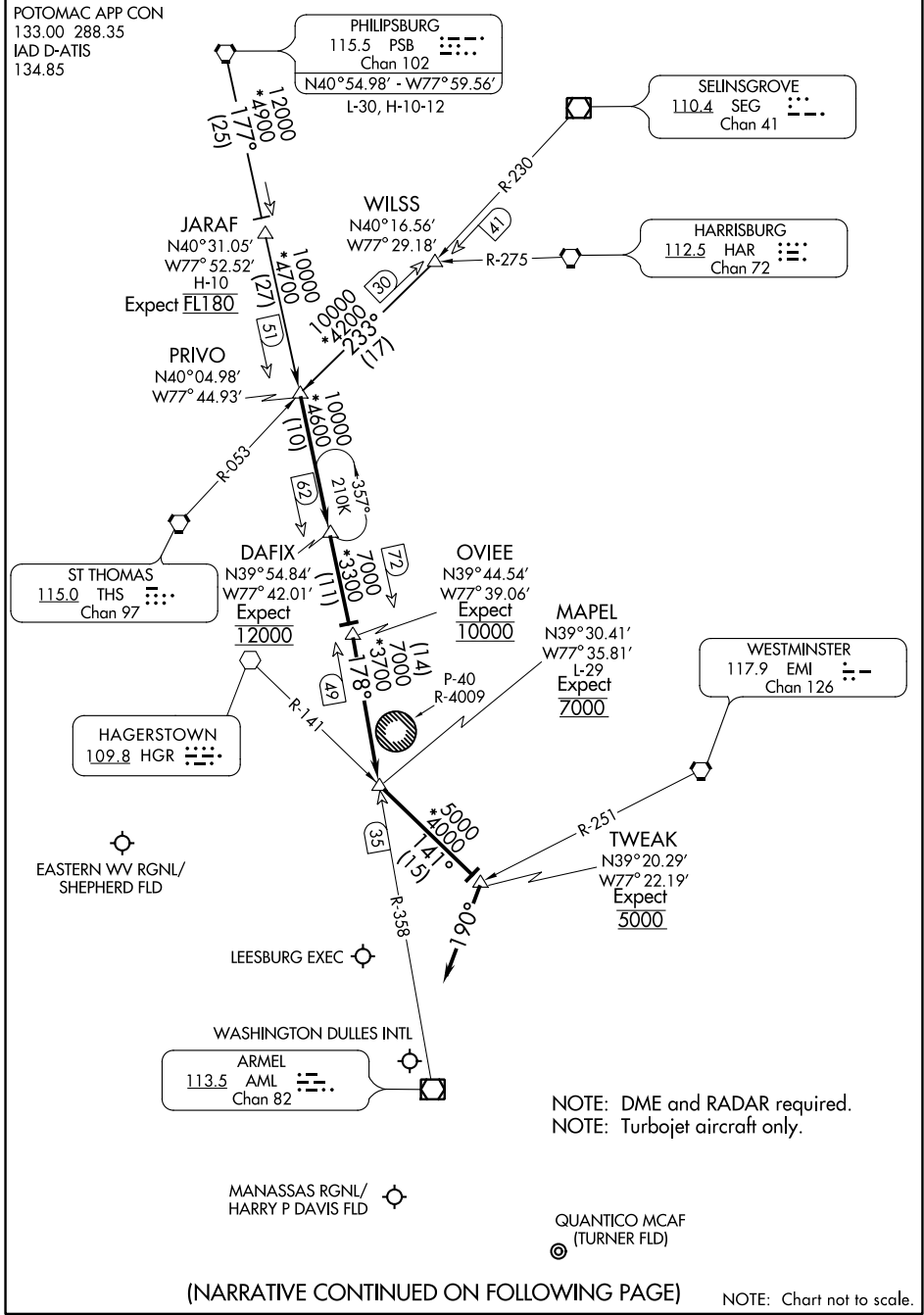


PRIVO TWO ARRIVAL



NE-3, 26 JAN 2023 to 23 FEB 2023

NE-3, 26 JAN 2023 to 23 FEB 2023

PRIVO TWO ARRIVAL

PRIVO TWO ARRIVAL

WASHINGTON, DC

ARRIVAL ROUTE DESCRIPTION

PHILIPSBURG TRANSITION (PSB.PRIVO2): From over PSB VORTAC on PSB R-177 to PRIVO. Thence...

WILSS TRANSITION (WILSS.PRIVO2): From over WILSS on THS R-053 to PRIVO. Thence...

...from PRIVO on PSB R-177 to DAFIX, then on PSB R-177 to OVIEE, then on AML R-358 to MAPEL. Then on HGR R-141 to TWEAK. Then on heading 190° or as assigned by ATC.

LANDING RWYS 01L/C/R and 30: Expect RADAR vectors to final approach course after TWEAK.

LANDING RWYS 19L/C/R and 12: Expect RADAR vectors to final approach course after MAPEL.

LANDING KHEF and KNYG: Expect RADAR vectors to destination airport after TWEAK.

LANDING KMRB and KJYO: Expect RADAR vectors to destination airport after MAPEL.

NE-3, 26 JAN 2023 to 23 FEB 2023

NE-3, 26 JAN 2023 to 23 FEB 2023