

(HIICH2.HIICH) 21112

HIICH TWO DEPARTURE (RNAV)

SL-5326

MANASSAS RGNL/HARRY P DAVIS FLD (HEF)
WASHINGTON, DC

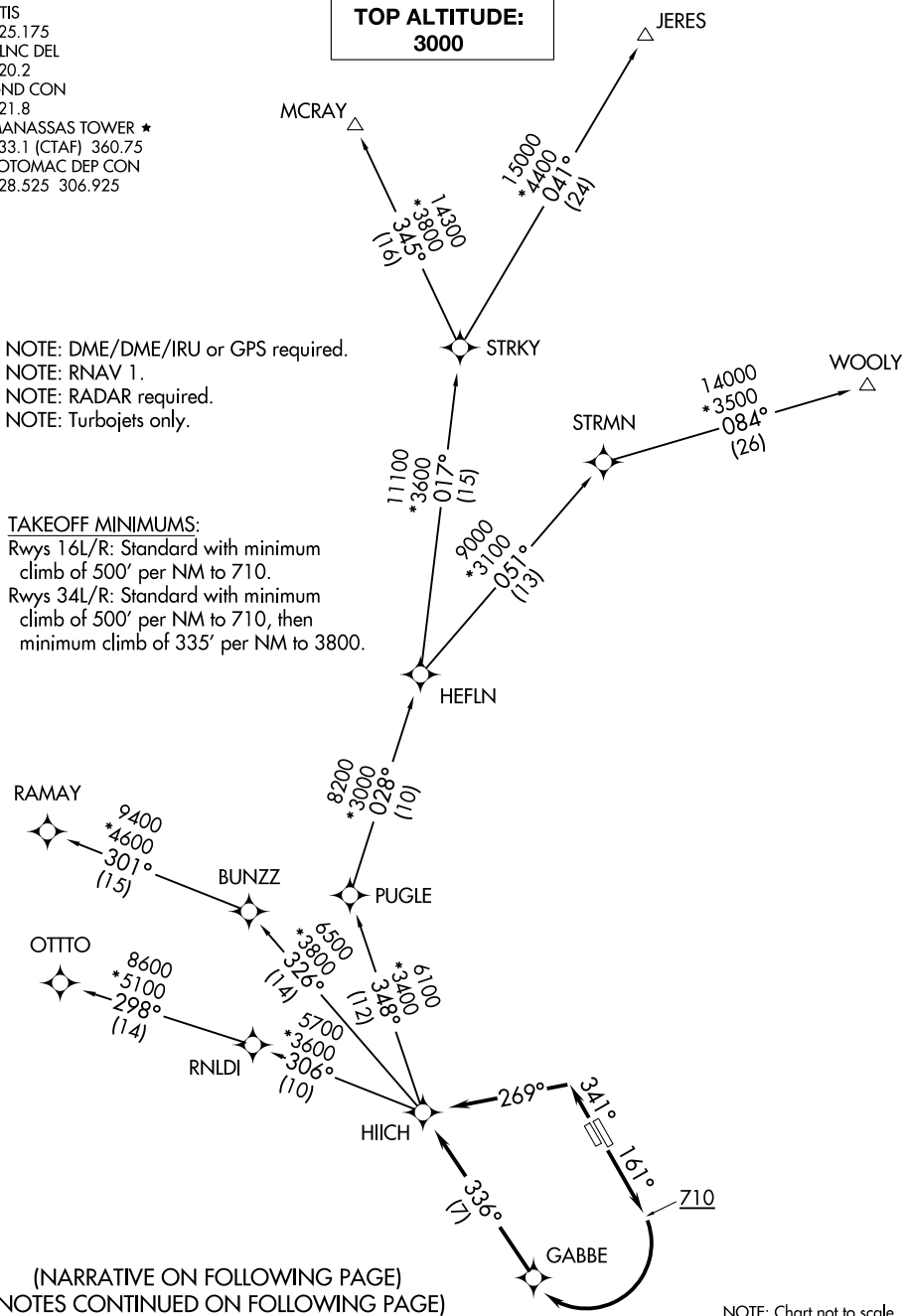
ATIS
125.175
CLNC DEL
120.2
GND CON
121.8
MANASSAS TOWER ★
133.1 (CTAF) 360.75
POTOMAC DEP CON
128.525 306.925

**TOP ALTITUDE:
3000**

NOTE: DME/DME/IRU or GPS required.
NOTE: RNAV 1.
NOTE: RADAR required.
NOTE: Turbojets only.

TAKEOFF MINIMUMS:

Rwys 16L/R: Standard with minimum
climb of 500' per NM to 710.
Rwys 34L/R: Standard with minimum
climb of 500' per NM to 710, then
minimum climb of 335' per NM to 3800.



(NARRATIVE ON FOLLOWING PAGE)
(NOTES CONTINUED ON FOLLOWING PAGE)

NOTE: Chart not to scale.

HIICH TWO DEPARTURE (RNAV)

(HIICH2.HIICH) 31MAR16

MANASSAS RGNL/HARRY P DAVIS FLD (HEF)
WASHINGTON, DC

NE-3, 26 JAN 2023 to 23 FEB 2023

NE-3, 26 JAN 2023 to 23 FEB 2023



DEPARTURE ROUTE DESCRIPTION

TAKEOFF RUNWAYS 16L/R: Climb heading 161° to 710, then right turn direct GABBE, then on track 336° to HIICH, thence

TAKEOFF RUNWAYS 34L/R: Climb heading 341° to intercept course 269° to HIICH, thence

. . . . on assigned transition. Maintain 3000. Expect clearance to filed altitude within 10 minutes after departure.

JERES TRANSITION (HIICH2.JERES)

MCRAY TRANSITION (HIICH2.MCRAY)

OTTO TRANSITION (HIICH2.OTTO)

RAMAY TRANSITION (HIICH2.RAMAY)

WOOLY TRANSITION (HIICH2.WOOLY)

NE-3, 26 JAN 2023 to 23 FEB 2023

NE-3, 26 JAN 2023 to 23 FEB 2023