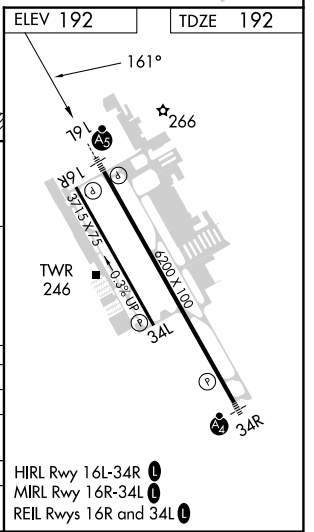
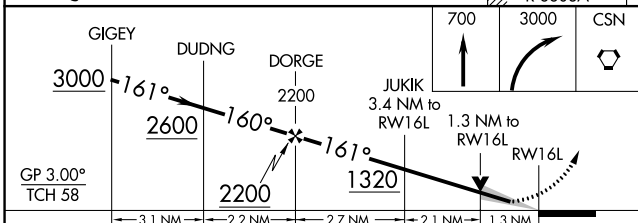
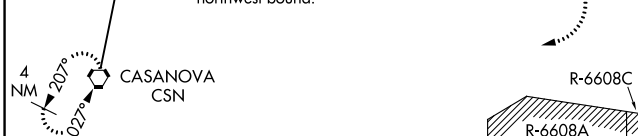
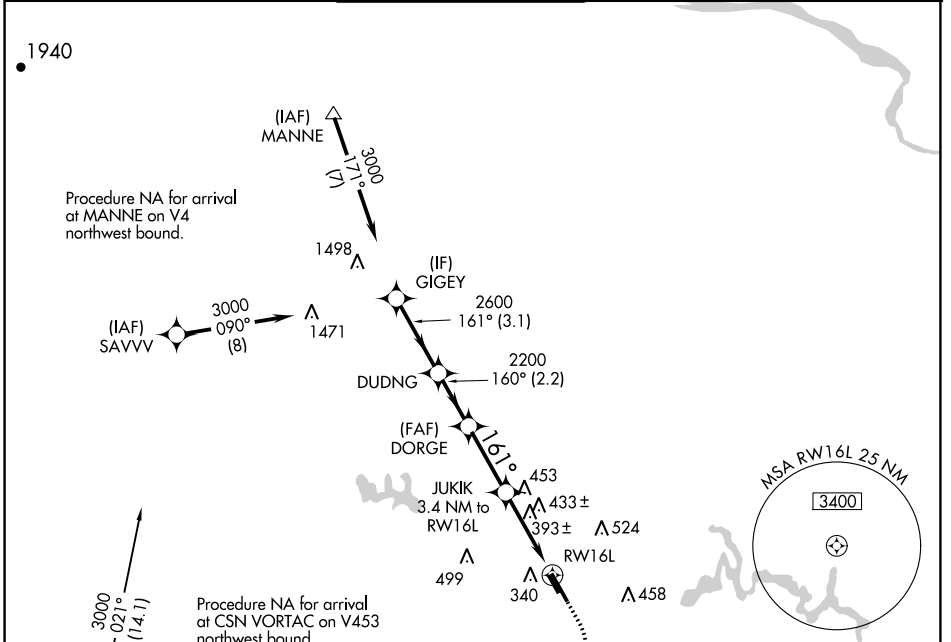


WAAS CH 70302 W16A	APP CRS 161°	Rwy ldg TDZE 192 Apt Elev 192
--	------------------------	---

RNAV (GPS) RWY 16L

MANASSAS RGNL/HARRY P DAVIS FLD (HEF)

RNP APCH - GPS.		MALSRL	MISSED APPROACH: Climb to 700 then climbing right turn to 3000 direct CSN VORTAC and hold.		
<p>▼ For uncompensated Baro-VNAV systems, LNAV/VNAV NA below -15°C or above 54°C. For inop ALS, increase LNAV Cat C/D visibility to 1½ SM.</p>					
ATIS 125.175	POTOMAC APP CON 128.525 306.925	MANASSAS TOWER ★ 133.1 (CTAF) 0 360.75	GND CON 121.8	CLNC DEL 120.2	CLNC DEL 120.2 (When twr closed)



GP 3.00° TCH 58	A		B		C		D
CATEGORY	A		B		C		D
LPV DA	442-½		250 (300-½)				
LNAV/VNAV DA	635-7/8		443 (500-7/8)				
LNAV MDA	660-½		468 (500-½)		660-1		468 (500-1)
CIRCLING	720-1		740-1		840-1¾		880-2¼
	528 (600-1)		548 (600-1)		648 (700-1¾)		688 (700-2¼)

NE-3, 26 JAN 2023 to 23 FEB 2023

NE-3, 26 JAN 2023 to 23 FEB 2023