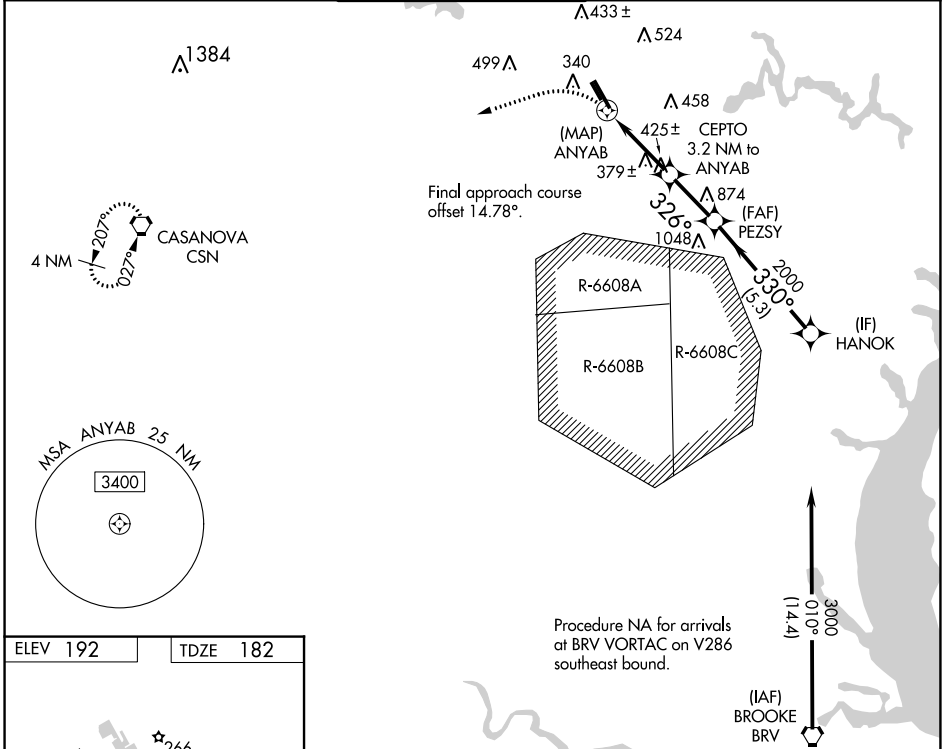


WAAS CH 56239 W34B	APP CRS 326°	Rwy Idg 3715 TDZE 182 Apt Elev 192
--	------------------------	---

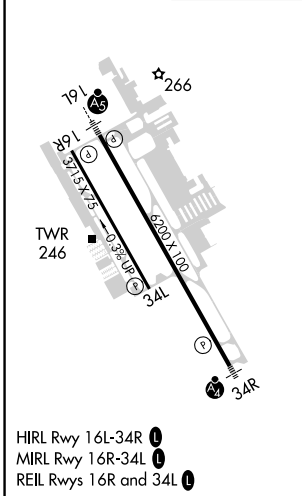
RNAV (GPS) RWY 34L

MANASSAS RGNL/HARRY P DAVIS FLD (HEF)

<p>⚠ DME/DME RNP-0.3 NA. When local altimeter setting not received, use Washington Dulles Intl altimeter setting and increase all MDA 60 feet; increase LNAV Cat C/D and Circling Cat C and D visibility 1/4 mile. Helicopter visibility reduction below 3/4 SM NA.</p>			<p>MISSED APPROACH: Climbing left turn to 3000 direct CSN VORTAC and hold.</p>		
ATIS 125.175	POTOMAC APP CON 128.525 306.925	MANASSAS TOWER * 133.1 (CTAF) 0 360.75	GND CON 121.8	CLNC DEL 120.2	CLNC DEL 120.2 (When twr closed)



ELEV 192	TDZE 182
----------	----------



3000	CSN	VGSi and descent angles not coincident (VGSi Angle 3.00/TCH 43).		HANOK																					
		0.9 NM to ANYAB	CEPTO 3.2 NM to ANYAB																						
		ANYAB	PEZSY																						
		1260	2000	3000																					
		0.4	0.9	2.4 NM	2.3 NM	5.3 NM																			
		<table border="1"> <thead> <tr> <th>CATEGORY</th> <th>A</th> <th>B</th> <th>C</th> <th>D</th> </tr> </thead> <tbody> <tr> <td>LP MDA</td> <td>640-1</td> <td>458 (500-1)</td> <td>640-1 3/8</td> <td>458 (500-1 3/8)</td> </tr> <tr> <td>LNAV MDA</td> <td>680-1</td> <td>498 (500-1)</td> <td>680-1 3/8</td> <td>498 (500-1 3/8)</td> </tr> <tr> <td>C CIRCLING</td> <td>720-1 528 (600-1)</td> <td>740-1 548 (600-1)</td> <td>840-1 3/4 648 (700-1 3/4)</td> <td>880-2 1/4 688 (700-2 1/4)</td> </tr> </tbody> </table>				CATEGORY	A	B	C	D	LP MDA	640-1	458 (500-1)	640-1 3/8	458 (500-1 3/8)	LNAV MDA	680-1	498 (500-1)	680-1 3/8	498 (500-1 3/8)	C CIRCLING	720-1 528 (600-1)	740-1 548 (600-1)	840-1 3/4 648 (700-1 3/4)	880-2 1/4 688 (700-2 1/4)
CATEGORY	A	B	C	D																					
LP MDA	640-1	458 (500-1)	640-1 3/8	458 (500-1 3/8)																					
LNAV MDA	680-1	498 (500-1)	680-1 3/8	498 (500-1 3/8)																					
C CIRCLING	720-1 528 (600-1)	740-1 548 (600-1)	840-1 3/4 648 (700-1 3/4)	880-2 1/4 688 (700-2 1/4)																					

NE-3, 26 JAN 2023 to 23 FEB 2023

NE-3, 26 JAN 2023 to 23 FEB 2023