

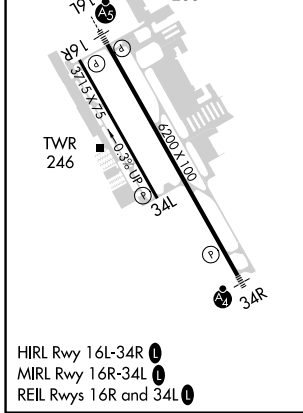
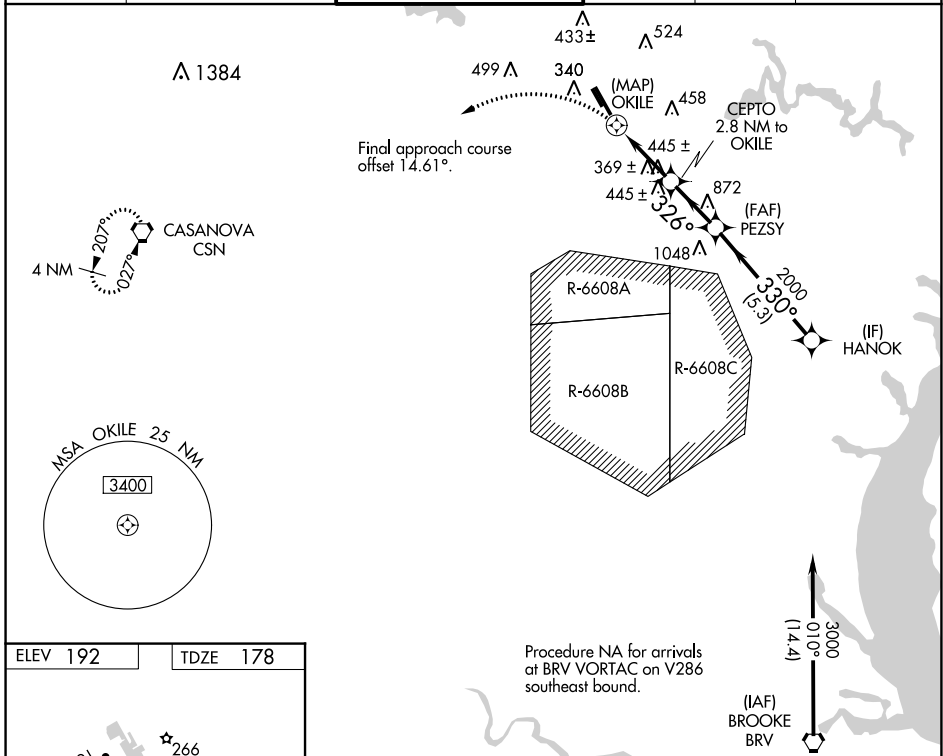
WAAS CH 63130 W34A	APP CRS 326°	Rwy Idg TDZE Apt Elev	6200 178 192
--	------------------------	-----------------------------	---

RNAV (GPS) RWY 34R

MANASSAS RGNL/HARRY P DAVIS FLD (HEF)

RNP APCH.	MALSF	MISSED APPROACH: Climbing left turn to 3000 direct CSN VORTAC and hold.
▼ Rwy 34R helicopter visibility reduction below 3/4 SM NA. For inop ALS, increase LP and LNAV Cats C/D visibility to 1 3/8 SM.		

ATIS 125.175	POTOMAC APP CON 128.525 306.925	MANASSAS TOWER * 133.1 (CTAF) 0 360.75	GND CON 121.8	CLNC DEL 120.2	CLNC DEL 120.2 (When twr closed)
------------------------	---	--	-------------------------	--------------------------	---



3000	CSN	HANOK			
OKILE		CEPTO 2.8 NM to OKILE	PEZSY	HANOK	
1 NM to OKILE		1260	2000	3000	
0.5		1 NM	1.8 NM	2.3 NM	5.3 NM
CATEGORY	A	B	C	D	
LP MDA	620-1 442 (500-1)				
LNAV MDA	640-1	462 (500-1)	640-1 3/8	462 (500-1 1/8)	
CIRCLING	700-1	740-1	840-1 3/4	920-2 1/4	
	508 (600-1)	548 (600-1)	648 (700-1 1/4)	728 (800-2 1/4)	

NE-3, 26 JAN 2023 to 23 FEB 2023

NE-3, 26 JAN 2023 to 23 FEB 2023