

LOC I-DLH 110.3	APP CRS 093°	Rwy Idg 10062 TDZE 1428 Apt Elev 1428
---------------------------	------------------------	--

ILS RWY 9 (CAT II)

DULUTH INTL (DLH)

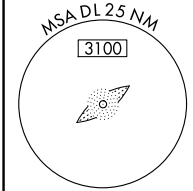
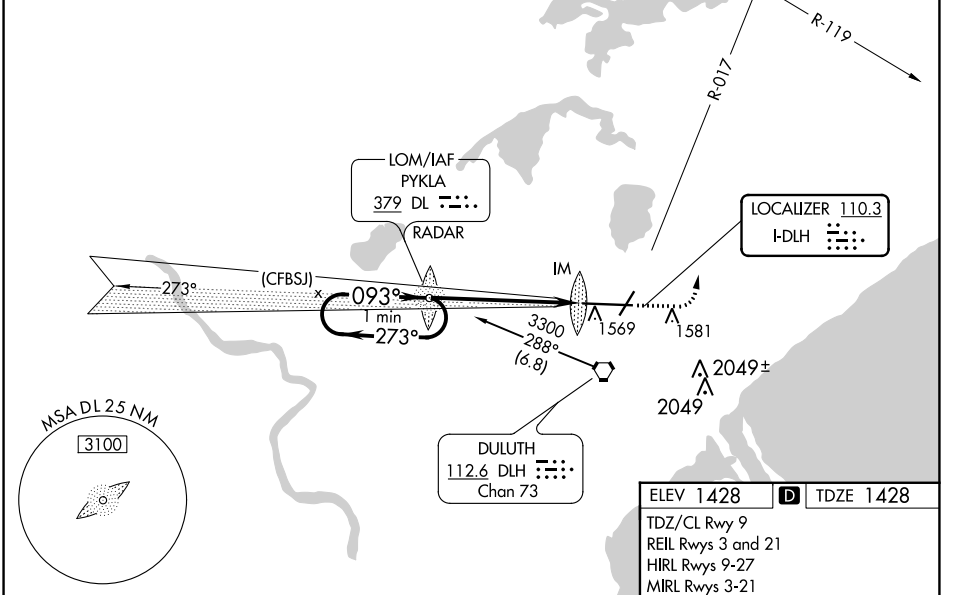
ASR ADF or RADAR required.	ALSF-2	MISSED APPROACH: Climb to 3000 then climbing left turn to 4500 on heading 320° and on DLH VORTAC R-017 to CHERL INT/DLH 15 DME and hold.
-------------------------------	--------	--

ATIS 124.1 270.1	DULUTH APP CON 125.45 233.7	DULUTH TOWER 118.3 257.8	GND CON 121.9 348.6
----------------------------	---------------------------------------	------------------------------------	-------------------------------

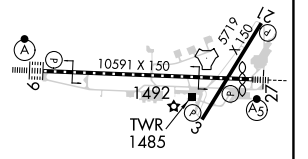
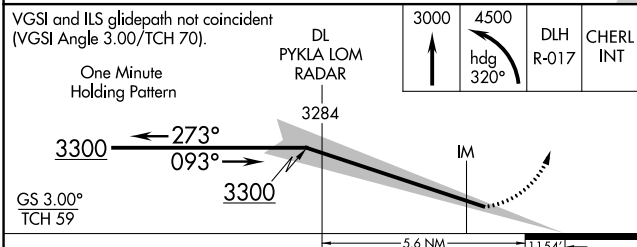
ALTERNATE MISSED APCH FIX

PYKLA
DL ---
379
RADAR

ADF or RADAR REQUIRED



ELEV 1428	D TDZE 1428
TDZ/CL Rwy 9 REIL Rwy 3 and 21 HIRL Rwy 9-27 MIRL Rwy 3-21	



CATEGORY	A	B	C	D
S-ILS 9	RA 101/12 100 DA 1528			

CATEGORY II ILS - SPECIAL AIRCREW & AIRCRAFT CERTIFICATION REQUIRED

NC-1, 18 MAY 2023 to 15 JUN 2023

NC-1, 18 MAY 2023 to 15 JUN 2023