

|                           |                        |  |
|---------------------------|------------------------|--|
| LOC I-DLH<br><b>110.3</b> | APP CRS<br><b>093°</b> | Rwy Idg <b>10062</b><br>TDZE <b>1428</b><br>Apt Elev <b>1428</b> |
|---------------------------|------------------------|--|

# ILS RWY 9 (SA CAT I)

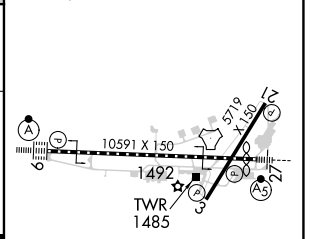
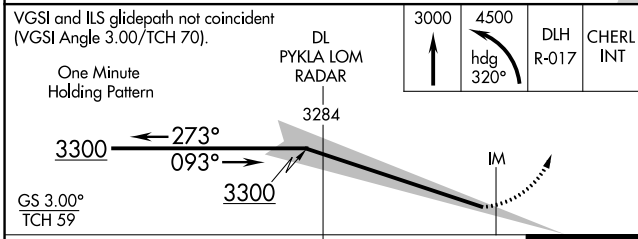
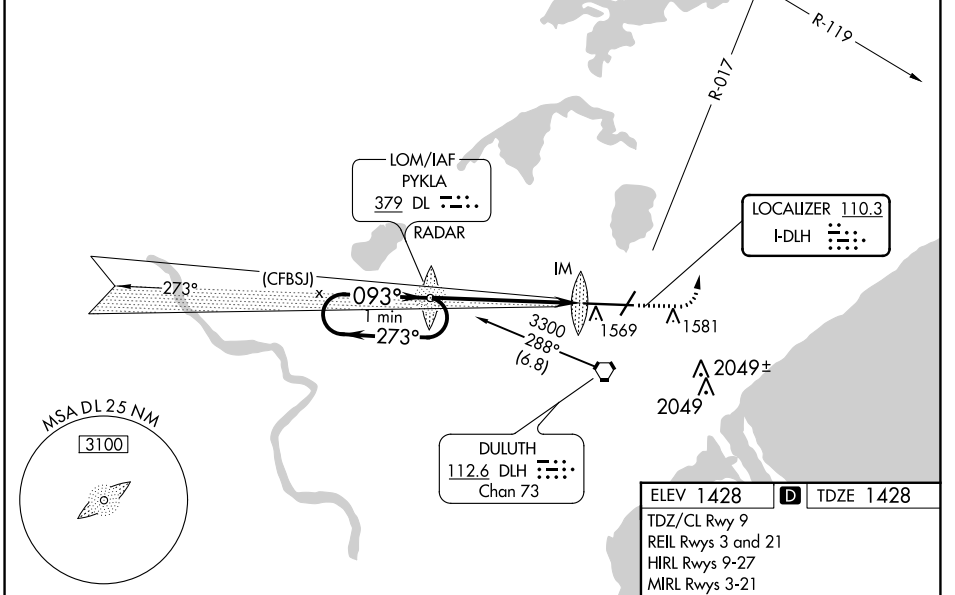
DULUTH INTL (DLH)

|   |                            |   |                                    |
|---|----------------------------|---|------------------------------------|
| <b>ASR</b><br>Requires specific OPSPEC, MSPEC, or LOA approval and use of HUD to DH. ADF or RADAR required. | ALSF-2<br>                 | <b>MISSED APPROACH:</b> Climb to 3000 then climbing left turn to 4500 on heading 320° and on DLH VORTAC R-017 to CHERL INT/DLH 15 DME and hold. |                                    |
|   | ATIS<br><b>124.1 270.1</b> | DULUTH APP CON<br><b>125.45 233.7</b>   | DULUTH TOWER<br><b>118.3 257.8</b> |

ALTERNATE MISSED APCH FIX

PYKLA  
 DL ---  
 379  
 RADAR

**ADF or RADAR REQUIRED**



|          |                       |   |   |   |
|----------|-----------------------|---|---|---|
| CATEGORY | A                     | B | C | D |
| S-ILS 9  | RA 144/14 150 DA 1578 |   |   |   |

**SA CATEGORY I ILS - SPECIAL AIRCREW & AIRCRAFT CERTIFICATION REQUIRED**

NC-1, 18 MAY 2023 to 15 JUN 2023

NC-1, 18 MAY 2023 to 15 JUN 2023