

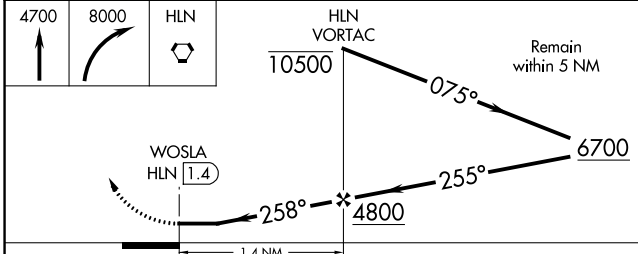
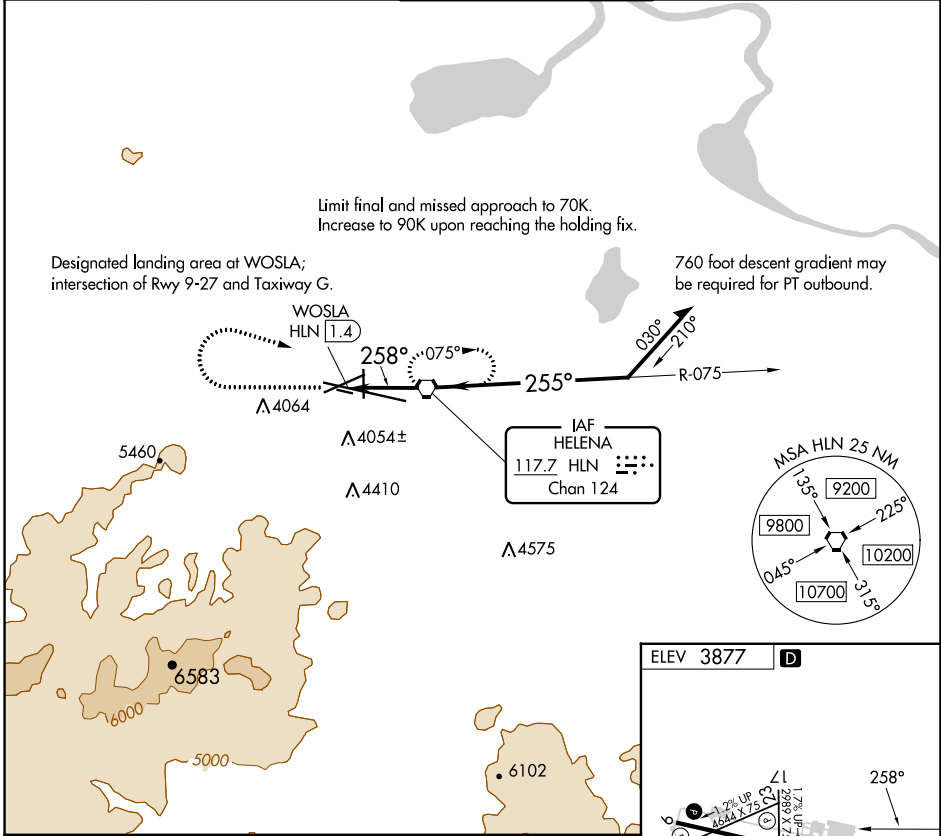
VORTAC HLN 117.7 Chan 124	APP CRS 258°	Rwy Idg Surface Elev 3846 Apt Elev 3877	N/A 3846 3877
---	------------------------	---	--

COPTER VOR 258°

HELENA RGNL (HLN)

NA -17°C When local altimeter setting not received, procedure NA.	MISSED APPROACH: Climb to 4700 then climbing right turn to 8000 direct HLN VORTAC and hold, continue climb-in-hold to 8000.
---	---

ATIS 120.4	HELENA APP CON * 119.5 229.4	HELENA TOWER * 118.3 (CTAF) 257.8	GND CON 121.9	UNICOM 122.95
----------------------	--	---	-------------------------	-------------------------



ELEV 3877 **D**

REIL Rwys 9, 17, and 35 **(L)**
MIRL Rwys 5-23 and 17-35 **(L)**
HIRL Rwy 9-27 **(L)**

FAF to MAP 1.4 NM

Knots	45	60	75	90	105
Min:Sec	1:52	1:24	1:07	0:56	0:48

CATEGORY	COPTER		FAF to MAP 1.4 NM					
H-258	4320-1	474 (500-1)	Knots	45	60	75	90	105
			Min:Sec	1:52	1:24	1:07	0:56	0:48

NW-1, 18 MAY 2023 to 15 JUN 2023

NW-1, 18 MAY 2023 to 15 JUN 2023