

| | | | | |
|--------------|-------|-------------|--------------|-------------|
| LOC | I-HLN | APP CRS | Rwy Idg TDZE | N/A |
| 110.1 | | 091° | Apt Elev | 3877 |

LOC BC-C

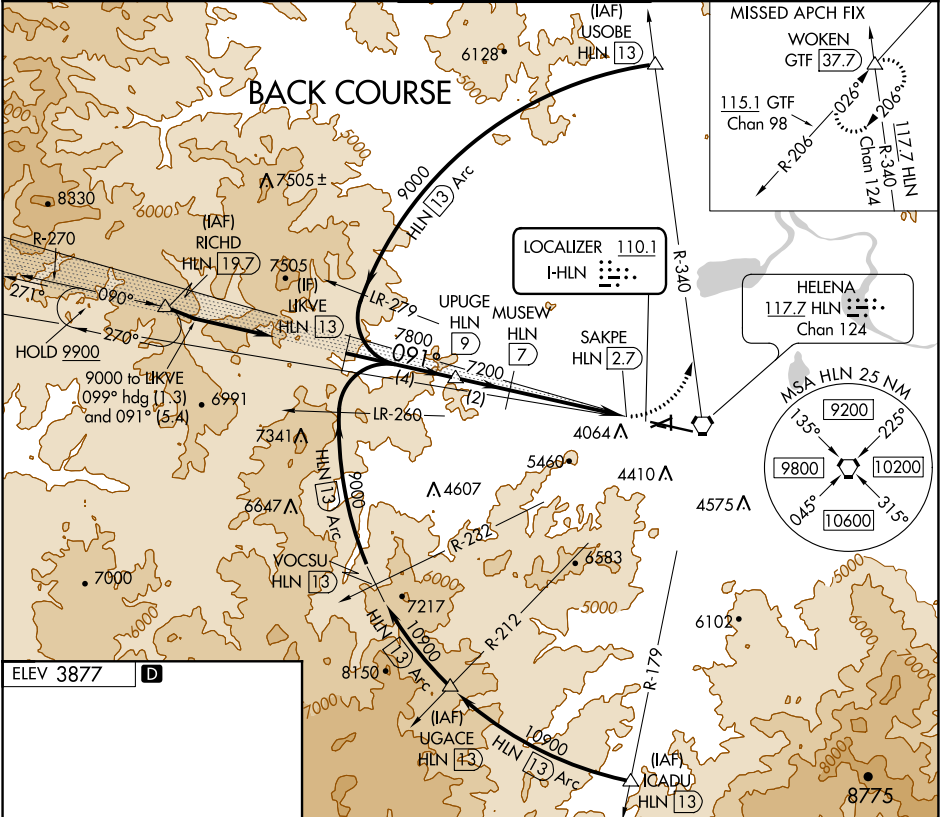
HELENA RGNL (HLN)

DME required.

⚠ Circling NA to Rwys 10 and 28. Circling Rwy 5, 23, 35 NA at night.
⚠ DME from HLN VORTAC. Simultaneous reception of I-HLN and HLN DME required. Rwy 5, 23, 35 helicopter visibility reduction below 1 SM NA.
⚠ -17°C

MISSED APPROACH: Climbing left turn to 9400 on HLN VORTAC R-340 to WOKEN INT/GTF 37.7 DME and hold, continue climb-in-hold to 9400.

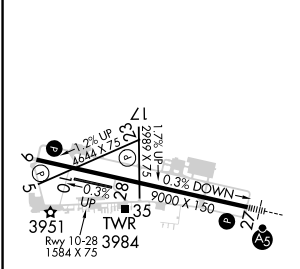
| | | | | |
|----------------------|--|---|-------------------------|-------------------------|
| ATIS 120.4 | HELENA APP CON * 119.5 229.4 | HELENA TOWER * 118.3 (CTAF) 257.8 | GND CON 121.9 | UNICOM 122.95 |
|----------------------|--|---|-------------------------|-------------------------|



NW-1, 18 MAY 2023 to 15 JUN 2023

NW-1, 18 MAY 2023 to 15 JUN 2023

ELEV 3877 **D**



REIL Rws 9, 17, and 35 **Ⓛ**
 MIRL Rws 5-23 and 17-35 **Ⓛ**
 HIRL Rwy 9-27 **Ⓛ**

| | | | | |
|-------------------|--|---------------------------|---------------------------|----|
| LIKVE HLN 13 | VGSI and descent angles not coincident (VGSI Angle 3.30/TCH 55). | | 9400 WOKEN HLN R-340 | |
| 9000 | UPUGE HLN 9 | MUSEW HLN 7 | Disregard GS indications. | |
| 091° | 7800 | 7200 | SAKPE HLN 2.7 | |
| | 4 NM | 2 NM | 4.3 NM | |
| 5.9% TCH 45 | | | | |
| CATEGORY | A | B | C | D |
| C CIRCLING | 5140-1¼ 1263 (1300-1¼) | 5140-1½ 1263 (1300-1½) | 6000-3 2123 (2200-3) | NA |