

APP CRS	Rwy Idg	9000
091°	TDZE	3864
	Apt Elev	3877

RNAV (RNP) Z RWY 9

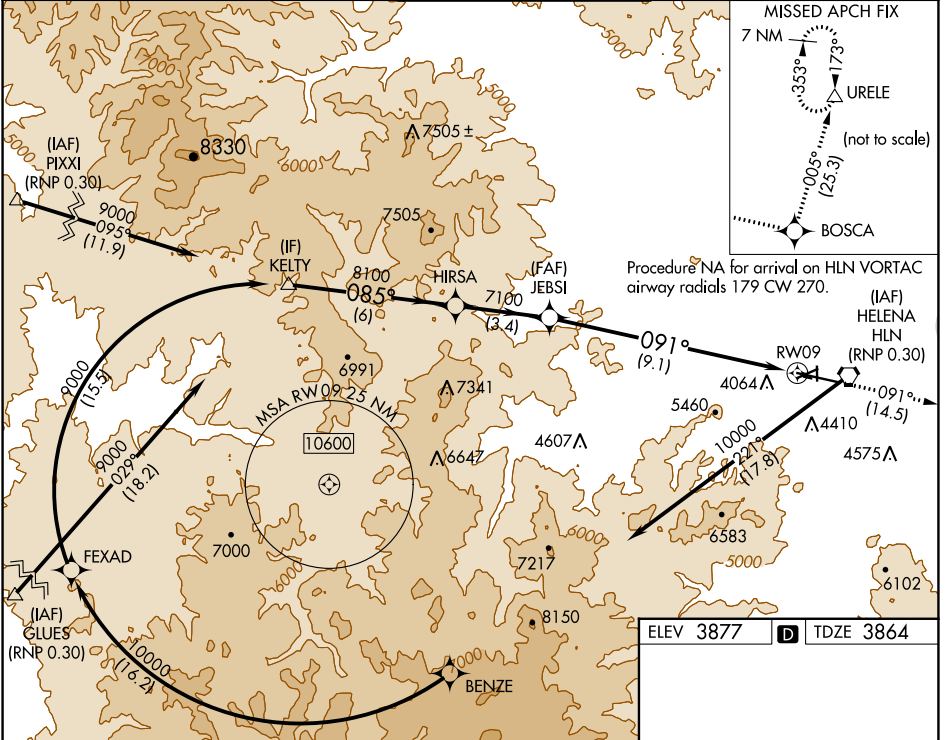
HELENA RGNL (HLN)

RNP AR APCH - GPS.

⚠ -17°C For uncompensated Baro-VNAV systems, procedure NA below -26°C or above 54°C.

MISSED APPROACH: Climb to 12000 on track 091° to BOSCA and on track 005° to URELE and hold.

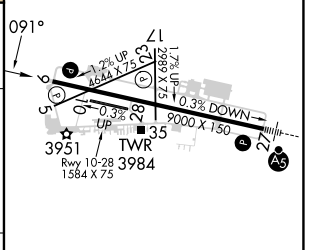
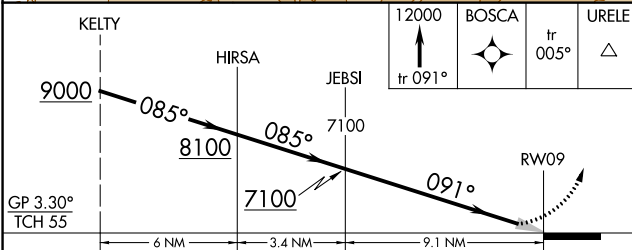
ATIS 120.4	HELENA APP CON * 119.5 229.4	HELENA TOWER * 118.3 (CTAF) 257.8	GND CON 121.9	UNICOM 122.95
----------------------	--	---	-------------------------	-------------------------



NW-1, 18 MAY 2023 to 15 JUN 2023

NW-1, 18 MAY 2023 to 15 JUN 2023

ELEV 3877	D TDZE 3864
-----------	--------------------



GP 3.30° TCH 55	KELTY		HIRSA		JEBSI		RWY 9	
	085°		085°		091°			
	6 NM		3.4 NM		9.1 NM			
CATEGORY	A	B	C	D				
RNP 0.11 DA		4222-1	358 (400-1)					
RNP 0.17 DA		4294-1¼	430 (500-1¼)					
RNP 0.30 DA		4485-1¾	621 (700-1¾)					

REIL Rwy 9, 17, and 35 **Ⓛ**
 MIRL Rwy 5-23 and 17-35 **Ⓛ**
 HIRL Rwy 9-27 **Ⓛ**

AUTHORIZATION REQUIRED