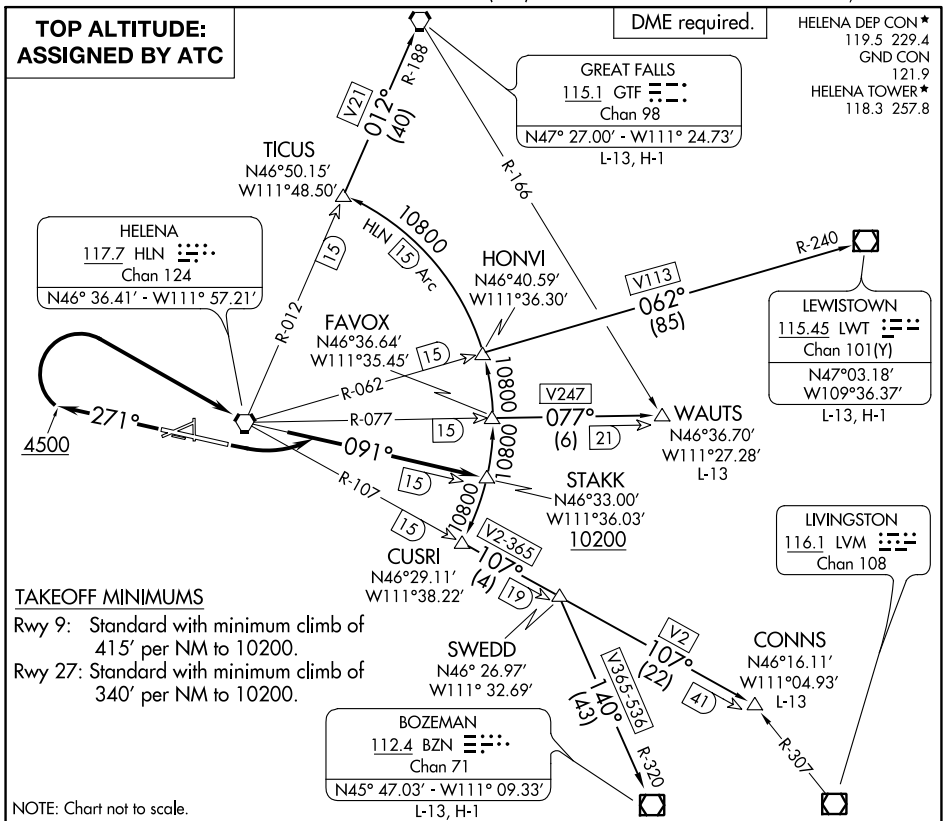


# STAKK FIVE DEPARTURE

HELENA RGNL (HLN)  
HELENA, MONTANA



## DEPARTURE ROUTE DESCRIPTION

**TAKEOFF RUNWAY 9:** Climbing left turn to intercept HLN R-091 to cross STAKK at or above 10200, thence. . . .

**TAKEOFF RUNWAY 27:** Climb on heading 271° to 4500 then climbing right turn direct HLN VORTAC. Continue climb on HLN R-091 to cross STAKK at or above 10200, thence. . . .  
. . . .on transition. Maintain assigned altitude.

**BOZEMAN TRANSITION (STAKK5.BZN):** From over STAKK on 15 DME Arc to CUSRI INT, then on HLN R-107 to SWEDD INT, then on BZN R-320 to BZN VOR/DME.

**CONNIS TRANSITION (STAKK5.CONNIS):** From over STAKK on 15 DME Arc to CUSRI INT, then on HLN R-107 to SWEDD INT, then on HLN R-107 to CONNIS INT.

**GREAT FALLS TRANSITION (STAKK5.GTF):** From over STAKK on 15 DME Arc to TICUS, then on HLN R-012 and GTF R-188 to GTF VORTAC.

**LEWISTOWN TRANSITION (STAKK5.LWT):** From over STAKK on 15 DME Arc to HONVI, then on HLN R-062 and LWT R-240 to LWT VOR/DME.

**WAUTS TRANSITION (STAKK5.WAUTS):** From over STAKK on 15 DME Arc to FAVOX, then on HLN R-077 to WAUTS INT.

NW-1, 18 MAY 2023 to 15 JUN 2023

NW-1, 18 MAY 2023 to 15 JUN 2023