

WAAS CH 63031 W14A	APP CRS 141°	Rwy Idg TDZE Apt Elev	4008 41 41
--	------------------------	-----------------------------	---------------------------------------

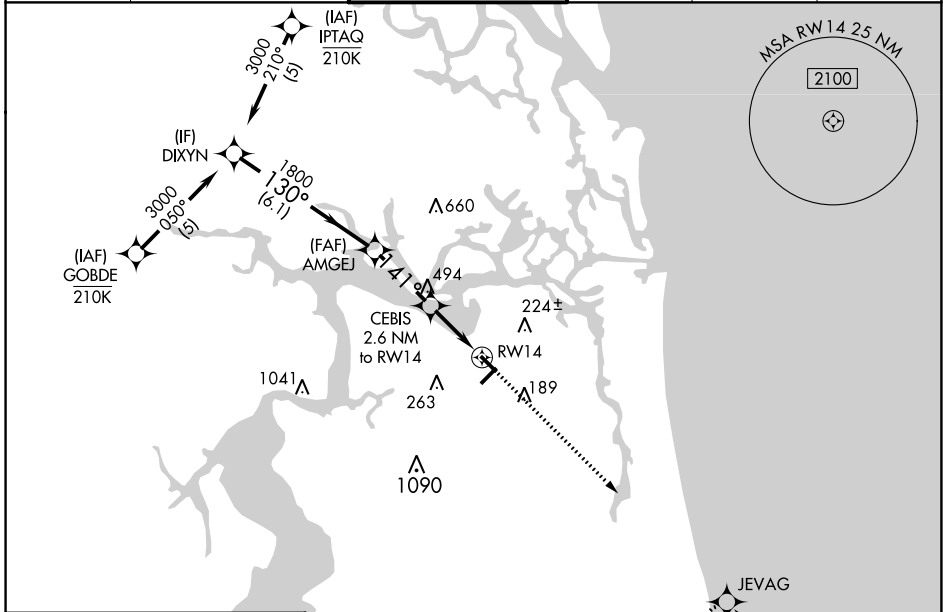
RNAV (GPS) RWY 14

JACKSONVILLE EXEC AT CRAIG (CRG)

⚠ Procedure NA at night. Baro-VNAV NA when using Jacksonville Intl altimeter setting. For uncompensated Baro-VNAV systems, LNAV/VNAV NA below -3°C (27°F) or above 54°C (130°F).
⚠ DME/DME RNP-0.3 NA. Helicopter visibility reduction below 1 SM NA. When local altimeter setting not received, use Jacksonville Intl altimeter setting; increase LPV DA to 325 feet; increase LNAV/VNAV DA to 450 feet and all visibilities ½ SM; increase all MDAs 40 feet and Circling visibility Cat C ¼ SM.

MISSED APPROACH:
Climb to 1900 direct JEVAG and hold.

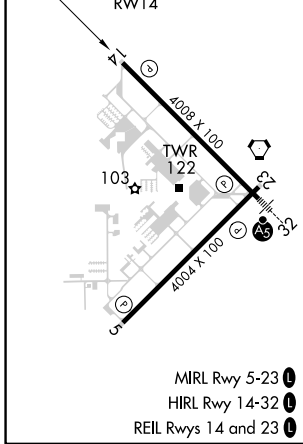
ATIS 125.4	JACKSONVILLE APP CON 124.9 308.4	CRAIG TOWER ★ 132.1 (CTAF) 269.525	GND CON 121.8	CLNC DEL 118.35	UNICOM 122.95
----------------------	--	--	-------------------------	---------------------------	-------------------------



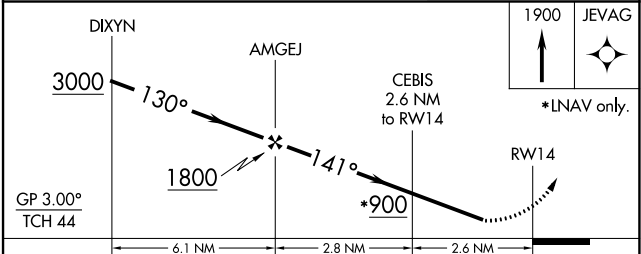
SE-3, 18 MAY 2023 to 15 JUN 2023

SE-3, 18 MAY 2023 to 15 JUN 2023

ELEV	41	TDZE	41
------	----	------	----



RADAR REQUIRED



GP 3.00° TCH 44				1900	JEVAG
CATEGORY	A	B	C	D	
LPV DA	293-1		252 (300-1)		
LNAV/VNAV DA	418-1¼		377 (400-1¼)		
LNAV MDA	500-1	459 (500-1)	500-1⅓	459 (500-1⅓)	
CIRCLING	500-1 459 (500-1)	600-1 559 (600-1)	620-1½ 579 (600-1½)	800-2½ 759 (800-2½)	