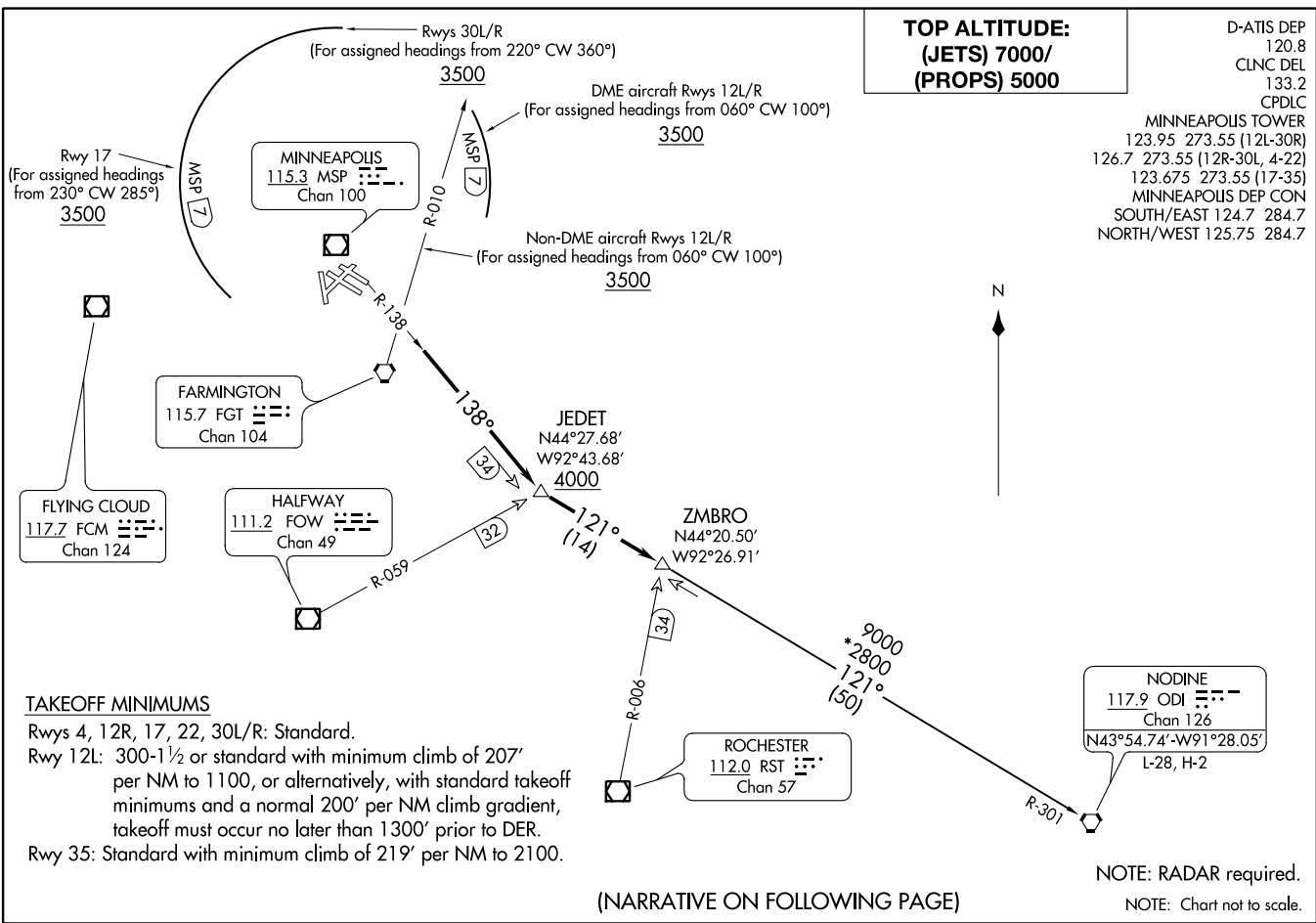


ZMBRO SEVEN DEPARTURE  
(ZMBRO7.ZMBRO) 17AUG17

MINNEAPOLIS, MINNESOTA  
MINNEAPOLIS-ST PAUL INTL/WOLD-CHAMBERLAIN (MSP)



(ZMBRO7.ZMBRO) 20086  
ZMBRO SEVEN DEPARTURE

MINNEAPOLIS-ST PAUL INTL/WOLD-CHAMBERLAIN (MSP)  
AL-264 (FAA)  
MINNEAPOLIS, MINNESOTA



DEPARTURE ROUTE DESCRIPTION

TAKEOFF ALL RUNWAYS: Fly assigned heading for RADAR vectors to MSP R-138 to cross JEDET INT/MSP 34 DME, at or above 4000; then on ODI R-301 to ZMBRO INT/ODI 50 DME. Turbojet aircraft maintain 7000 or lower assigned altitude, all other aircraft maintain 5000 or lower assigned altitude, thence. . . .

DME EQUIPPED AIRCRAFT RUNWAYS 12L/R DEPARTURES: For assigned headings from 060° clockwise to 100°, cross MSP 7 DME at or above 3500, maintain assigned altitude. If unable to comply, advise ATC as soon as possible prior to departure, thence. . . .

NON-DME EQUIPPED AIRCRAFT RUNWAYS 12L/R DEPARTURES: For assigned headings from 060° clockwise to 100°, cross FGT R-010 at or above 3500, maintain assigned altitude. If unable to comply, advise ATC as soon as possible prior to departure, thence. . . .

TAKEOFF RUNWAY 17: For assigned headings from 230° clockwise to 285°, cross MSP 7 DME at or above 3500, maintain assigned altitude. If unable to comply, advise ATC as soon as possible prior to departure, thence. . . .

TAKEOFF RUNWAYS 30L/R: For assigned headings from 220° clockwise to 360°, cross MSP 7 DME at or above 3500, maintain assigned altitude. If unable to comply, advise ATC as soon as possible prior to departure, thence. . . .

TAKEOFF RUNWAYS 4, 22, 35: Initially assigned heading. Thence. . . .

. . . .on assigned transition or route. Expect clearance to filed altitude/flight level 10 (ten) minutes after departure.

NODINE TRANSITION (ZMBRO7.ODI): From over ZMBRO on ODI R-301 to ODI VORTAC.

NC-1, 18 MAY 2023 to 15 JUN 2023

NC-1, 18 MAY 2023 to 15 JUN 2023