

FORT LEWIS, WASHINGTON

ILS or LOC RWY 15

LOC I-GRF 108.3 Chan 20	APCH CRS 151°	Rwy Idg TDZE Arprt Elev 6124 300 301	AL-413 [USA] GRAY AAF (JOINT BASE LEWIS MCCHORD) (KGRF)
--------------------------------------	-------------------------	--	---

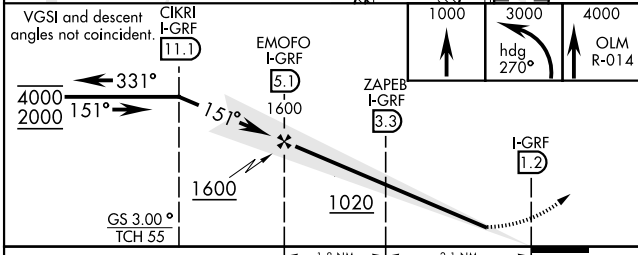
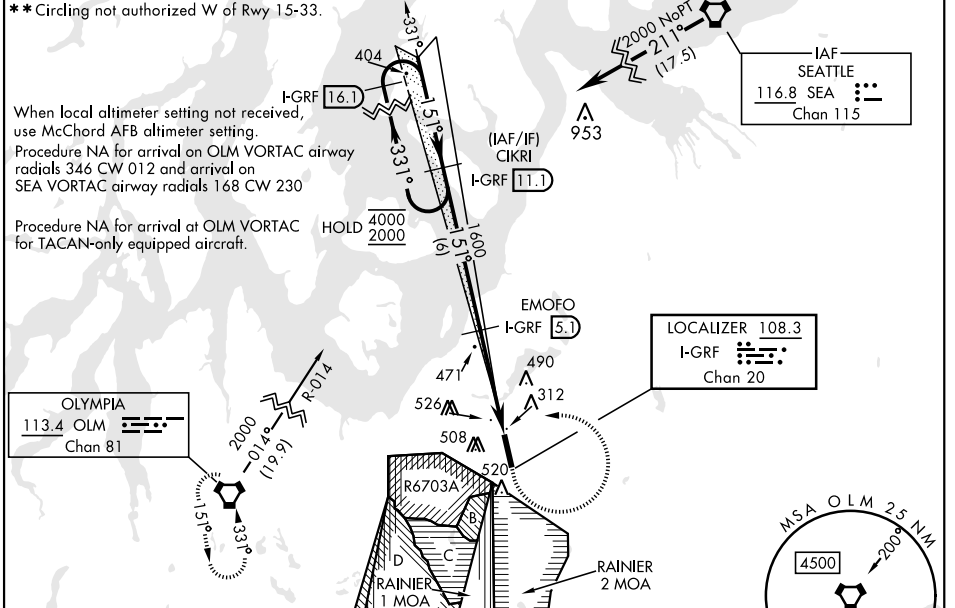
RNAV1 - GPS from SEA VORTAC.

DME required for civil use. For non-RNAV aircraft, RADAR required from SEA VORTAC.

SSALR MISSED APPROACH: Climb to 1000, then climbing left turn to 3000 on hdg 270° and OLM VORTAC R-014, then continue climb to 4000 on OLM R-014 to OLM and hold.

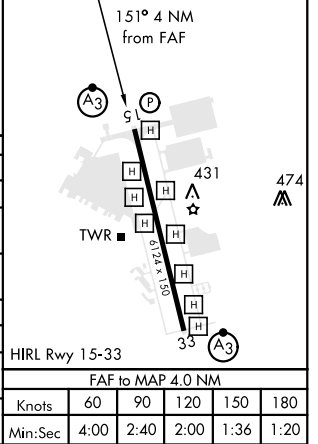
*When ALS inop when using McChord AFB altimeter setting, increase LOC CAT C/D vis to RVR 55.

ATIS 124.65 306.2	SEATTLE APP CON 120.1 290.9	TOWER ★ 119.325 (CTAF) 256.8	GND CON 121.9 290.2	CLNC DEL 121.9 290.2	PAR
-----------------------------	---------------------------------------	--	-------------------------------	--------------------------------	-----



ELEV	301	TDZE	300
------	-----	------	-----

CATEGORY	A	B	C	D
S-ILS 15	500/24		200	(200-½)
S-LOC 15	640/24	340 (400-½)	640/26	340 (400-½)
CIRCLING **	840-1	539 (600-1)	840-1½ 539 (600-1½)	920-2 619 (700-2)
McCHORD FLD ALTIMETER SETTING MINIMUMS				
S-ILS 15	516/24		216	(300-½)
S-LOC 15*	660/24	360 (400-½)	660/35	360 (400-¾)
CIRCLING **	860-1	559 (600-1)	860-1½ 559 (600-1½)	940-2 639 (700-2)



FORT LEWIS, WASHINGTON 47°05'N-122°35'W GRAY AAF (JOINT BASE LEWIS MCCHORD) (KGRF)

Amdt 8A 05DEC19

ILS or LOC RWY 15

NW-1, 18 MAY 2023 to 15 JUN 2023

NW-1, 18 MAY 2023 to 15 JUN 2023