

FORT LEWIS, WASHINGTON

RNAV (GPS) RWY 15

APCH CRS	Rwy Idg	6124
151°	TDZE	300
	Arpt Elev	301

AL-413 (USA)

GRAY AAF (JOINT BASE LEWIS MCCHORD) (KGRF)

* Circling not authorized W of Rwy 15-33.

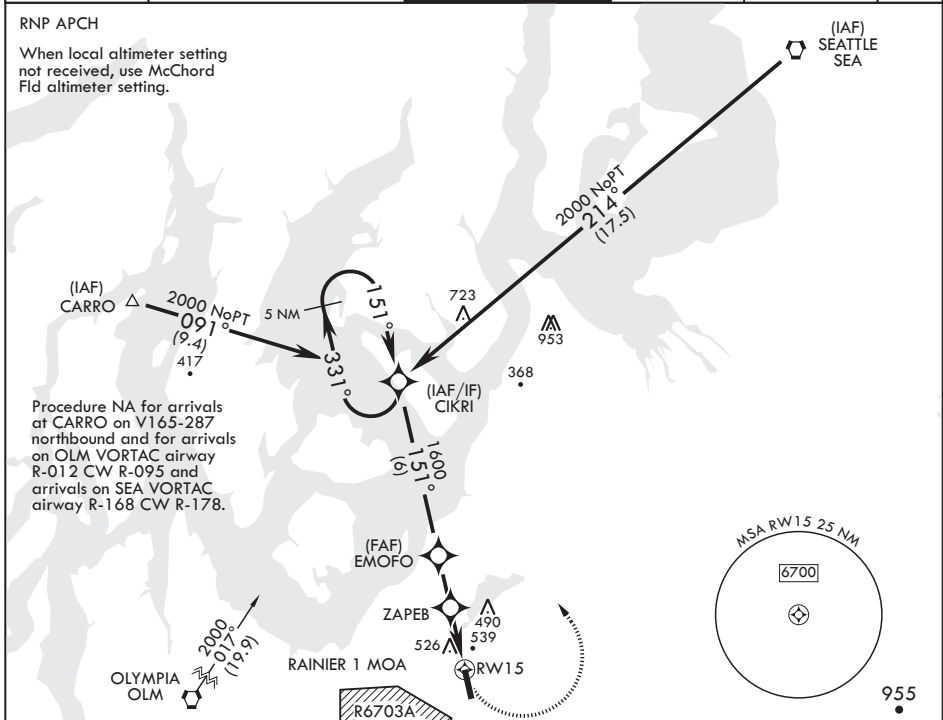


MISSED APPROACH: Climbing left turn to 2000 direct CIKRI and hold.

ATIS 124.65 306.2	SEATTLE APP CON/DEP CON 120.1 290.9	TOWER * 119.325 (CTAF) 256.8	GND CON 121.9 290.2	CLNC DEL 121.9 290.2	PAR
----------------------	--	---------------------------------	------------------------	-------------------------	-----

RNP APCH

When local altimeter setting not received, use McChord Fld altimeter setting.

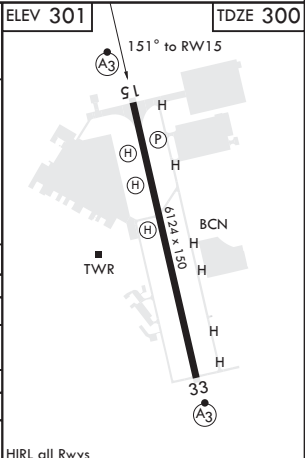
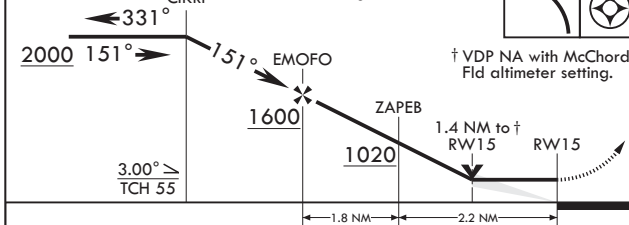


Procedure NA for arrivals at CARRO on V165-287 northbound and for arrivals on OLM VORTAC airway R-012 CW R-095 and arrivals on SEA VORTAC airway R-168 CW R-178.

NW-1, 18 MAY 2023 to 15 JUN 2023

NW-1, 18 MAY 2023 to 15 JUN 2023

VGSI and descent angles not coincident.	2000	CIKRI	ELEV 301	TDZE 300
---	------	-------	----------	----------



CATEGORY	A	B	C	D
LNAV MDA	800/24	500 (500-½)	800/50	500 (500-1)
C CIRCLING*	840-1	539 (600-1)	840-1½ 539 (600-1½)	920-2 619 (700-2)
MC CHORD FLD ALTIMETER SETTING MINIMUMS				
LNAV MDA	820/24		520 (600-½)	
C CIRCLING*	860-1	559 (600-1)	860-1½ 559 (600-1½)	940-2 639 (700-2)

HIRL all Rwys

FORT LEWIS, WASHINGTON

47°05'N - 122°35'W GRAY AAF (JOINT BASE LEWIS MCCHORD) (KGRF)

Amdt 2 10OCT19

RNAV (GPS) RWY 15