

FORT LEWIS, WASHINGTON

RNAV (GPS) RWY 33

AL-413 (USA)

GRAY AAF (JOINT BASE LEWIS MCCHORD) (KGRF)

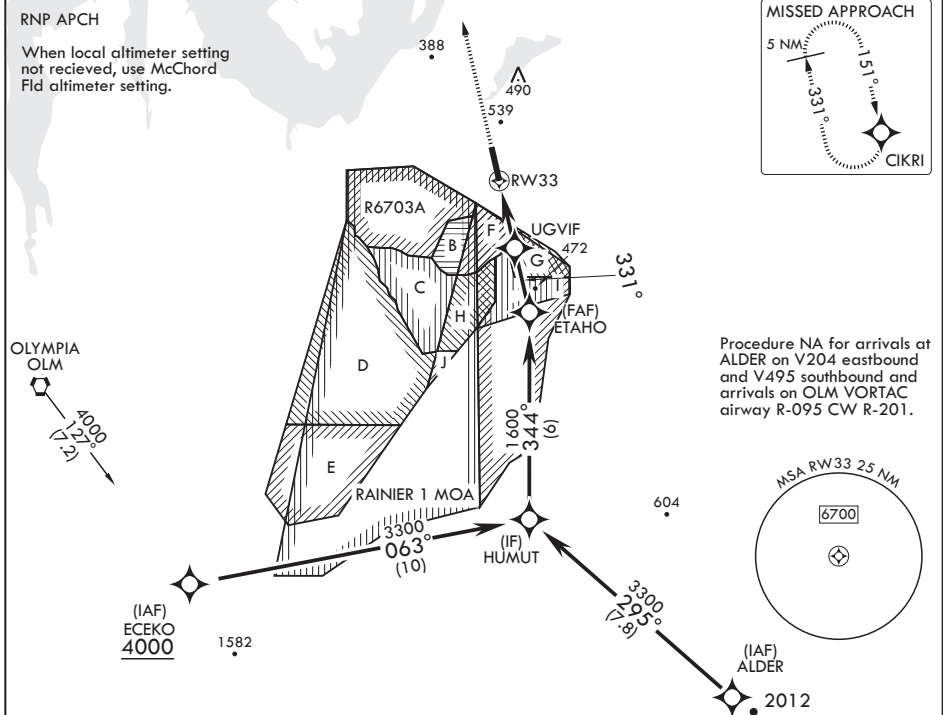
APCH CRS	Rwy Idg	6124
331°	TDZE	301
	Arpt Elev	301

* Circling not authorized W of Rwy 15-33.



MISSED APPROACH: Climb to 2000 direct CIKRI and hold.

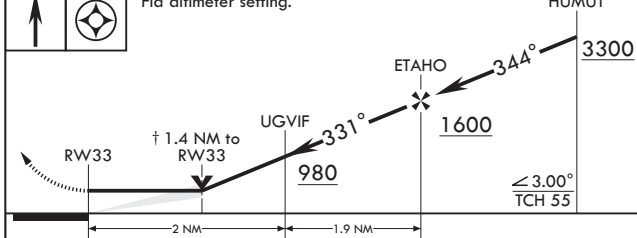
ATIS	SEATTLE APP CON/DEP CON	TOWER *	GND CON	CLNC DEL	PAR
124.65 306.2	120.1 290.9	119.325 (CTAF) 256.8	121.9 290.2	121.9 290.2	



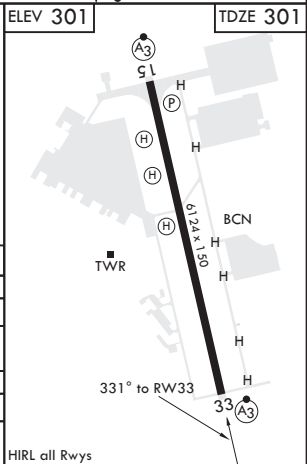
NW-1, 18 MAY 2023 to 15 JUN 2023

NW-1, 18 MAY 2023 to 15 JUN 2023

2000	CIKRI	† VDP NA with McChord Fld altimeter setting.	HUMUT	ELEV 301	TDZE 301
------	-------	--	-------	----------	----------



CATEGORY	A	B	C	D
LNAV MDA	800-½	499 (500-½)	800-1	499 (500-1)
C CIRCLING*	840-1	539 (600-1)	840-1½ 539 (600-1½)	920-2 619 (700-2)
MC CHORD FLD ALTIMETER SETTING MINIMUMS				
LNAV MDA	820-½	519 (600-½)	820-1	519 (600-1)
C CIRCLING*	860-1	559 (600-1)	860-1½ 559 (600-1½)	940-2 639 (700-2)



FORT LEWIS, WASHINGTON

47°05'N - 122°35'W GRAY AAF (JOINT BASE LEWIS MCCHORD) (KGRF)

Amdt 2 10OCT19

RNAV (GPS) RWY 33