

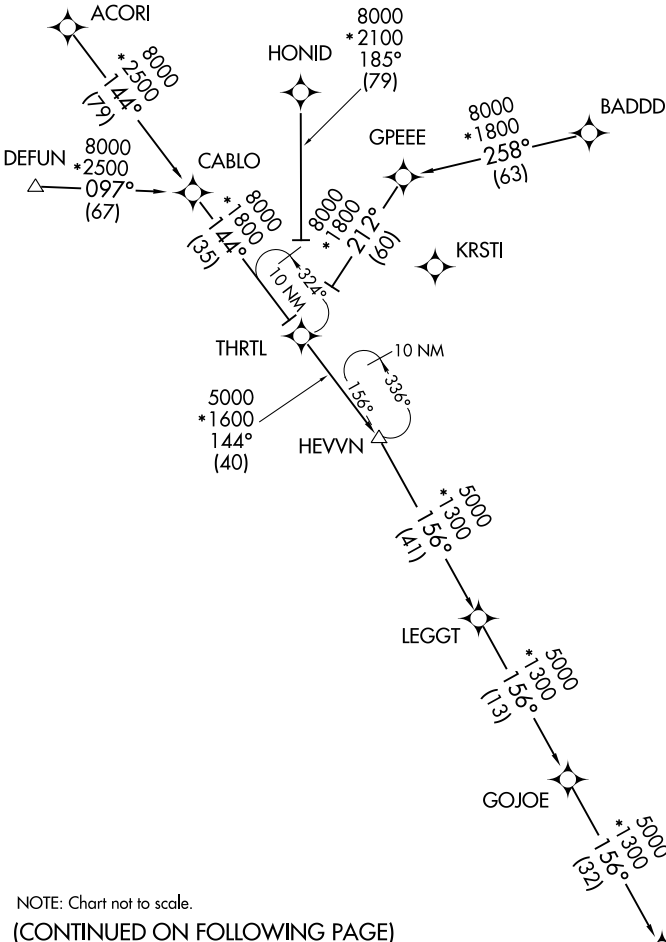
MAATY FOUR ARRIVAL (RNAV) Transition Routes

TAMPA, FLORIDA

TAMPA APP CON
118.8 239.3
MCF ATIS
133.825 270.1
LAL ATIS
118.025
TPA D-ATIS
126.45
VDF AWOS-3
121.125

RNAV 1 - DME/DME/IRU or GPS.
RADAR required.

NOTE: Jet and turboprop aircraft only.
NOTE: Do not file BADDD, HEVVN
or GOJOE Transitions - to be assigned by ATC.



NOTE: Chart not to scale.

(CONTINUED ON FOLLOWING PAGE)

- ACORI TRANSITION (ACORI.MAATY4)
- BADDD TRANSITION (BADDD.MAATY4)
- DEFUN TRANSITION (DEFUN.MAATY4)
- GOJOE TRANSITION (GOJOE.MAATY4)
- HEVVN TRANSITION (HEVVN.MAATY4)
- HONID TRANSITION (HONID.MAATY4)

MAATY 11000
8000
See following page
for arrival routes.

SE-3, 18 MAY 2023 to 15 JUN 2023

SE-3, 18 MAY 2023 to 15 JUN 2023

MAATY FOUR ARRIVAL (RNAV) Arrival Routes

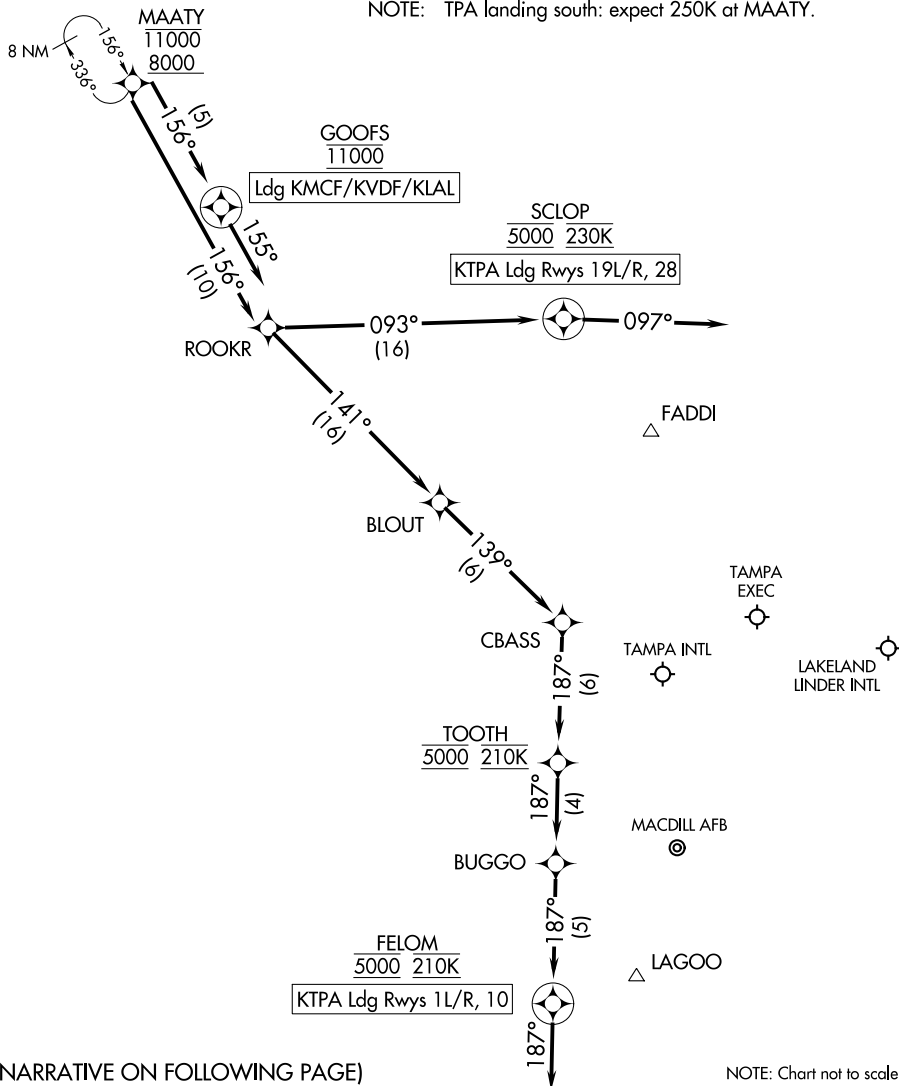
TAMPA, FLORIDA

TAMPA APP CON
118.8 239.3
MCF ATIS
133.825 270.1
LAL ATIS
118.025
TPA D-ATIS
126.45
VDF AWOS-3
121.125

RNAV 1 - DME/DME/IRU or GPS.

RADAR required.

NOTE: Jet and turboprop aircraft only.
NOTE: TPA landing south: expect 250K at MAATY.



(NARRATIVE ON FOLLOWING PAGE)

NOTE: Chart not to scale.

SE-3, 18 MAY 2023 to 15 JUN 2023

SE-3, 18 MAY 2023 to 15 JUN 2023

ARRIVAL ROUTE DESCRIPTION

KTPA: From MAATY on track 156° to ROOKR.

LANDING KTPA RUNWAYS 1L/R, 10: From ROOKR on track 141° to BLOUT, then on track 139° to CBASS, then on track 187° to cross TOOTH at 5000 and at 210K, then on track 187° to BUGGO, then on track 187° to cross FELOM at 5000 and at 210K, then on track 187°. Expect RADAR vectors to final approach course.

LANDING KTPA RUNWAYS 19L/R, 28: From ROOKR on track 093° to cross SCLOP at 5000 and at 230K, then on track 097°. Expect RADAR vectors to final approach course.

LANDING KMCF/KVDF/KLAL: From MAATY on track 156° to cross GOOFS at 11000, then on heading 155°. Expect RADAR vectors to final approach course.

SE-3, 18 MAY 2023 to 15 JUN 2023

SE-3, 18 MAY 2023 to 15 JUN 2023