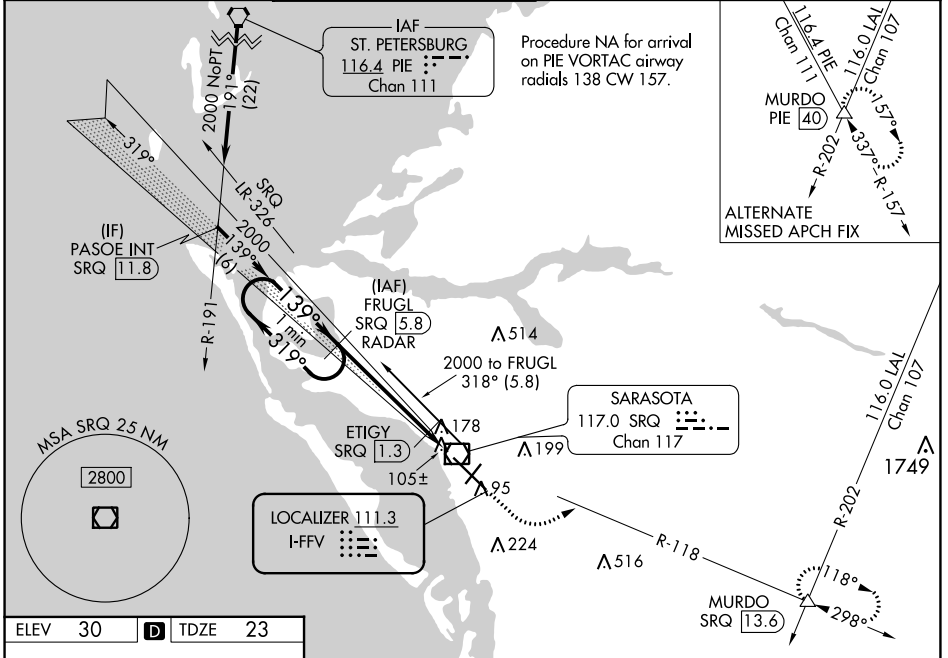


LOC I-FFV 111.3	APP CRS 139°	Rwy Idg 7540
		TDZE 23
		Apt Elev 30

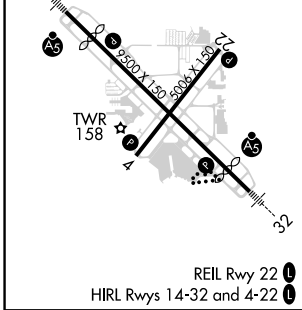
ILS or LOC RWY 14

SARASOTA/BRADENTON INTL (SRQ)

DME or RADAR required for LOC only.		MALSR 	MISSED APPROACH: Climb to 1000 then climbing left turn to 2000 on SRQ VOR/DME R-118 to MURDO INT/SRQ 13.6 DME and hold.	
<p>⚠ When control tower closed, S-ILS 14 Minimums NA; increase S-LOC 14 Cats A and B and ETIGY Fix Minimums S-LOC 14 all Cats visibility to 1 mile. When control tower closed, inop table does not apply to S-LOC 14 Cats A and B and ETIGY Fix Minimums S-LOC 14 all Cats.</p>				
ATIS 124.375	TAMPA APP CON 119.65 353.575	SARASOTA TOWER ★ 120.1(CTAF) 0 256.8	GND CON 121.9 273.6	CLNC DEL 118.25
		UNICOM 122.95		



ELEV 30	D	TDZE 23
---------	----------	---------



FAF to MAP 6 NM					
Knots	60	90	120	150	180
Min:Sec	6:00	4:00	3:00	2:24	2:00

SARASOTA/BRADENTON, FLORIDA
Amdt 6D 04NOV21

27°24'N-82°33'W

SARASOTA/BRADENTON INTL (SRQ) ILS or LOC RWY 14

SE-3, 18 MAY 2023 to 15 JUN 2023

SE-3, 18 MAY 2023 to 15 JUN 2023