


LOC I-SRQ 109.7	APP CRS 319°	Rwy Idg TDZE Apt Elev	7510 27 30
---------------------------	------------------------	-----------------------------	---------------------------------------

ILS or LOC RWY 32

SARASOTA/BRADENTON INTL (SRQ)

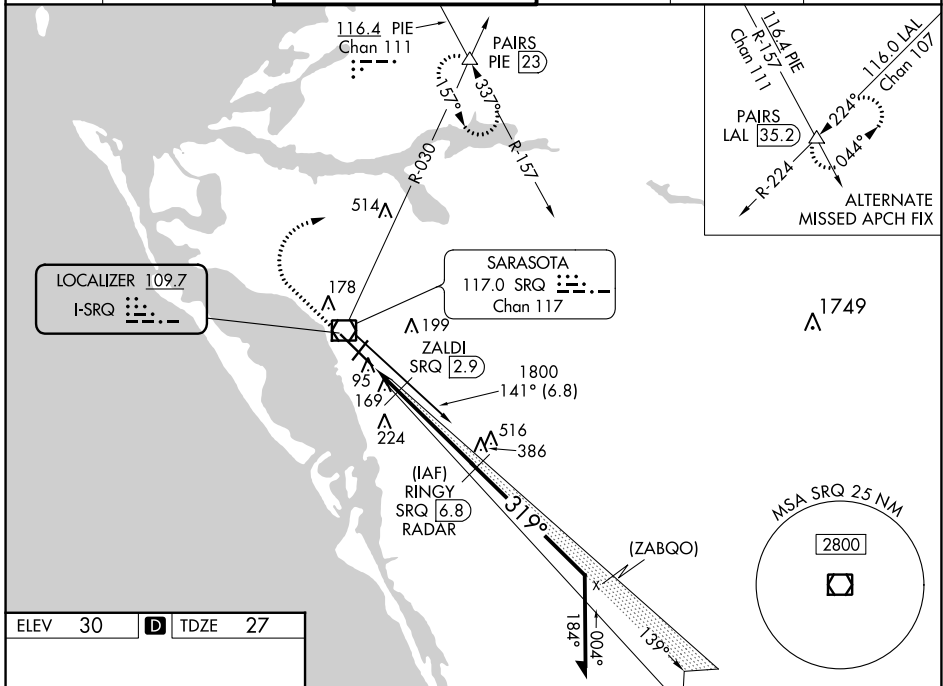
DME or RADAR required.

Autopilot coupled approach NA below 840. When control tower closed, S-ILS 32 Minimums NA, increase S-LOC 32 and ZALDI Fix Minimums S-LOC 32 all Cats visibility to 1. When control tower closed, inop table does not apply to S-LOC 32 and ZALDI Fix Minimums all Cats.

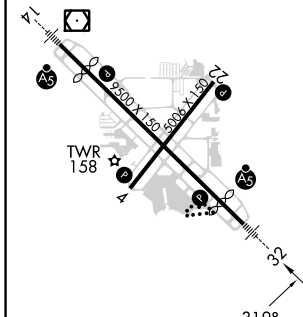
MALSR 

MISSED APPROACH: Climb to 1000 then climbing right turn to 3000 on heading 065° and SRQ VOR/DME R-030 to PAIRS INT/PIE VORTAC 23 DME and hold, continue climb-in-hold to 3000.

ATIS 124.375	TAMPA APP CON 119.65 353.575	SARASOTA TOWER ★ 120.1(CTAF) 256.8	GND CON 121.9 273.6	CLNC DEL 118.25	UNICOM 122.95
------------------------	--	--	-------------------------------	---------------------------	-------------------------



ELEV 30	D	TDZE 27
---------	----------	---------





1000	3000	SRQ R-030	PAIRS	RINGY SRQ 6.8 RADAR	Remain within 10 NM
↑	hdg 065°		△		

*LOC only.

ZALDI SRQ 2.9, RINGY SRQ 6.8 RADAR, 1800, 139°, 319°, 1800, 480*, 1800, GS 3.00° TCH 53

CATEGORY	A	B	C	D
S-ILS 32	227-½ 200 (200-½)			
S-LOC 32	480-½	453 (500-½)	480-¾	453 (500-¾)
CIRCLING	500-1	470 (500-1)	600-1½	600-2
			570 (600-1½)	570 (600-2)
ZALDI FIX MINIMUMS				
S-LOC 32	360-½ 333 (400-½)			
CIRCLING	500-1	470 (500-1)	600-1½	600-2
			570 (600-1½)	570 (600-2)

REIL Rwy 22 

HIRL Rws 14-32 and 4-22 

FAF to MAP 5.4 NM

Knots	60	90	120	150	180
Min:Sec	5:24	3:36	2:42	2:10	1:48

SE-3, 18 MAY 2023 to 15 JUN 2023

SE-3, 18 MAY 2023 to 15 JUN 2023