

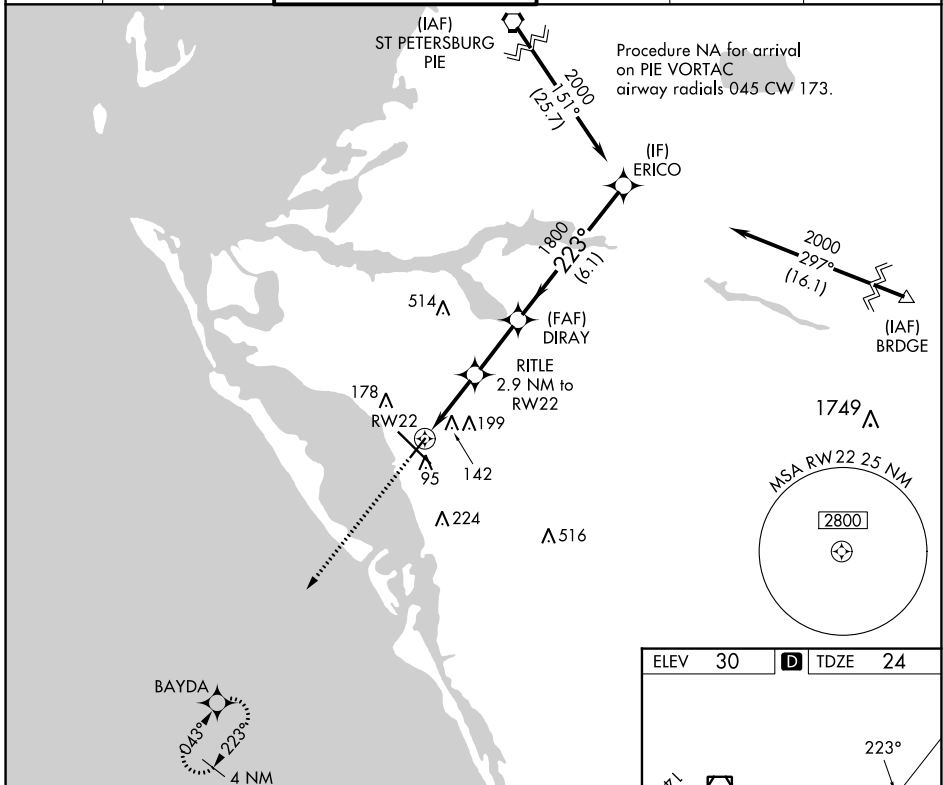
APP CRS	Rwy Idg	5006
223°	TDZE	24
	Apt Elev	30

RNAV (GPS) RWY 22

SARASOTA/BRADENTON INTL (SRQ)

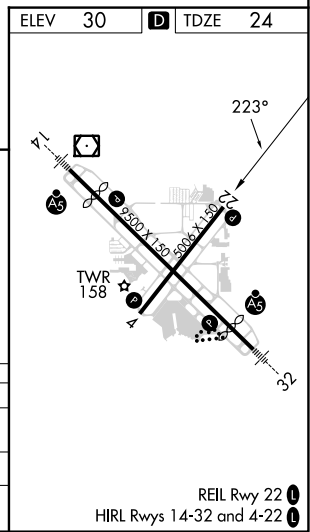
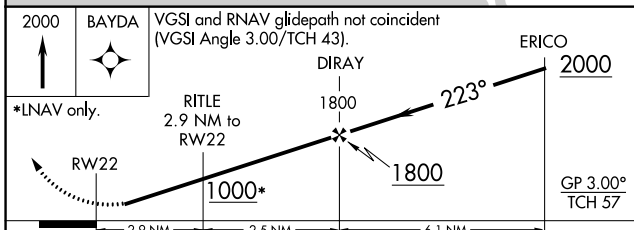
RNP APCH.		MISSED APPROACH: Climb to 2000 direct BAYDA and hold.			
<p>▼ Rwy 22 helicopter visibility reduction below 1 SM NA. For uncompensated Baro-VNAV systems, LNAV/VNAV NA below -1.5°C or above 43°C.</p>					

ATIS 124.375	TAMPA APP CON 119.65 353.575	SARASOTA TOWER ★ 120.1(CTAF) 256.8	GND CON 121.9 273.6	CLNC DEL 118.25	UNICOM 122.95
------------------------	--	--	-------------------------------	---------------------------	-------------------------



SE-3, 18 MAY 2023 to 15 JUN 2023

SE-3, 18 MAY 2023 to 15 JUN 2023



CATEGORY	A	B	C	D
LNAV/VNAV DA	303-1		279 (300-1)	
LNAV MDA	400-1		376 (400-1)	
CIRCLING	500-1	470 (500-1)	600-1½ 570 (600-1½)	600-2 570 (600-2)

REIL Rwy 22
HIRL Rws 14-32 and 4-22