

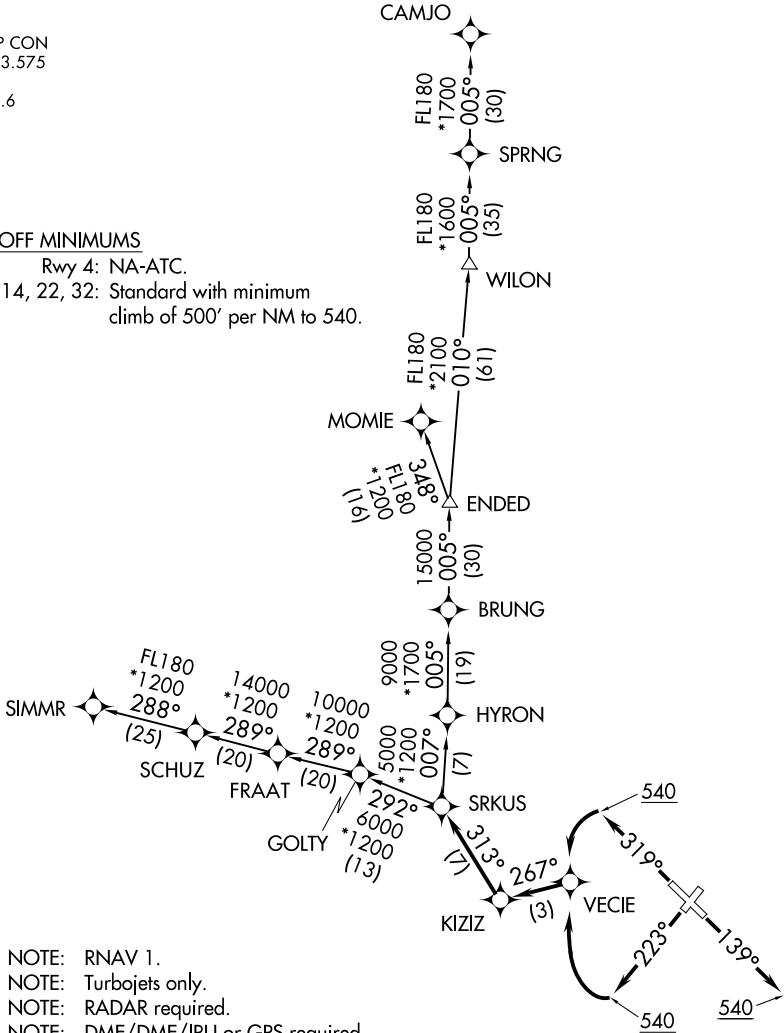
SRKUS FOUR DEPARTURE (RNAV)

ATIS
124.375
SARASOTA TOWER ★
120.1 (CTAF) 256.8
CLNC DEL
118.25
TAMPA DEP CON
119.65 353.575
GND CON
121.9 273.6

TAKEOFF MINIMUMS

Rwy 4: NA-ATC.

Rwys 14, 22, 32: Standard with minimum
climb of 500' per NM to 540.



- NOTE: RNAV 1.
- NOTE: Turbojets only.
- NOTE: RADAR required.
- NOTE: DME/DME/IRU or GPS required.

NOTE: Chart not to scale.

(NARRATIVE ON FOLLOWING PAGE)

SE-3, 18 MAY 2023 to 15 JUN 2023

SE-3, 18 MAY 2023 to 15 JUN 2023

SRKUS FOUR DEPARTURE (RNAV)



DEPARTURE ROUTE DESCRIPTION

TAKEOFF RWY 4: NA-ATC.

TAKEOFF RWY 14: Climb heading 139° or as assigned by ATC, to at or above 540, for vectors to KIZIZ, then on track 313° to SRKUS, thence. . . .

TAKEOFF RWY 22: Climb heading 223° to at or above 540, then right turn direct VECIE, then on track 267° to KIZIZ, then on track 313° to SRKUS, thence. . . .

TAKEOFF RWY 32: Climb heading 319° to at or above 540, then left turn direct VECIE, then on track 267° to KIZIZ, then on track 313° to SRKUS, thence. . . .

. . . .maintain 3000 or as assigned by ATC. Expect climb to filed altitude within ten minutes after departure.

CAMJO TRANSITION (SRKUS4.CAMJO)

MOMIE TRANSITION (SRKUS4.MOMIE)

SIMMR TRANSITION (SRKUS4.SIMMR)

SE-3, 18 MAY 2023 to 15 JUN 2023

SE-3, 18 MAY 2023 to 15 JUN 2023