

LOC/DME I-GAD <b>108.35</b> Chan 20(Y)	APP CRS <b>244°</b>	Rwy Idg <b>6802</b>
	TDZE <b>560</b>	
	Apt Elev <b>569</b>	

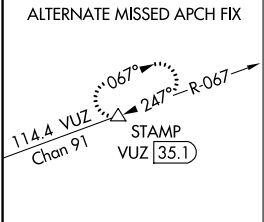
# ILS or LOC RWY 24

NORTHEAST ALABAMA RGNL (GAD)

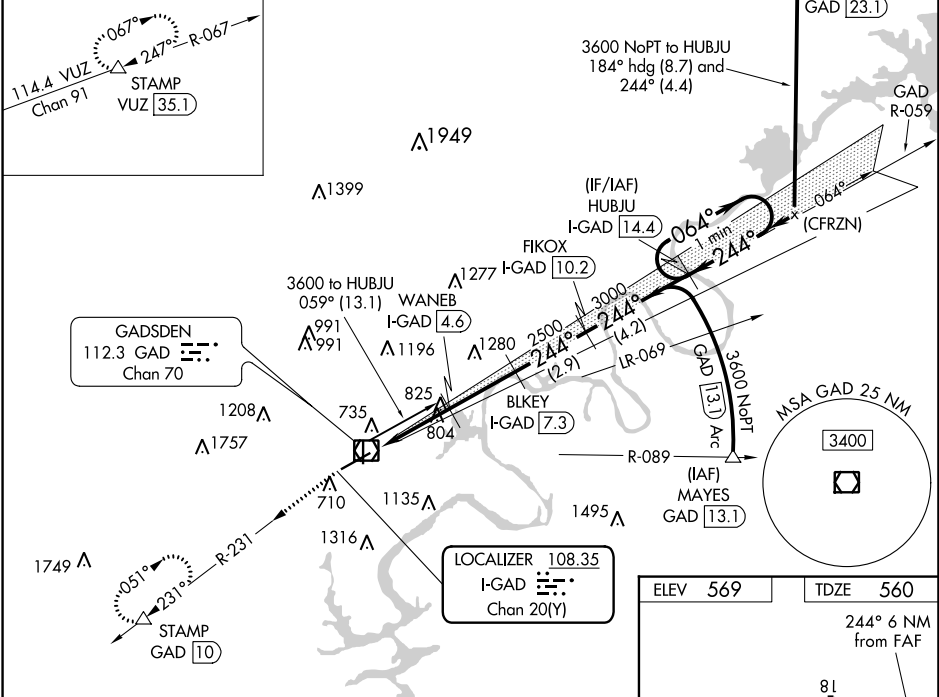
**▽** DME required. VDP NA when using Annniston altimeter setting. When local altimeter setting not received, use Annniston altimeter setting and increase DA to 845 feet and all visibilities ¼ SM: increase all MDAs 80 feet and visibility S-LOC Cats C and D ¼ SM and Circling Cat C ½ SM.

**MISSED APPROACH:** Climb to 3600 on GAD VOR/DME R-231 to STAMP/GAD 10 DME and hold, continue climb-in-hold to 3600.

AWOS-3PT <b>127.825</b>	BIRMINGHAM APP CON <b>125.45 279.65</b>	CLNC DEL <b>120.05 257.7</b>	UNICOM <b>122.8 (CTAF)</b>
----------------------------	--	---------------------------------	-------------------------------



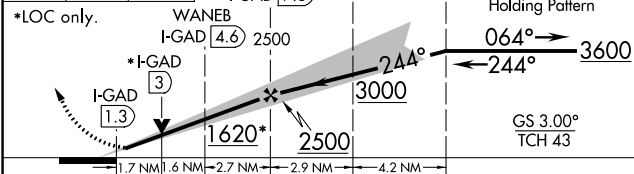
## DME REQUIRED



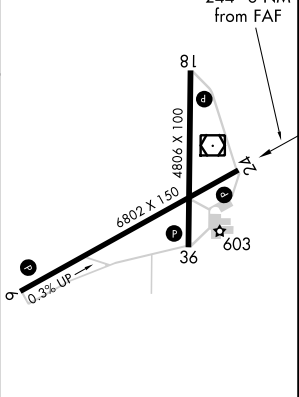
SE-4, 18 MAY 2023 to 15 JUN 2023

SE-4, 18 MAY 2023 to 15 JUN 2023

3600 ↑	GAD ◻ R-231	STAMP △	Use I-GAD DME when on the localizer course.	HUBJU I-GAD 14.4
*LOC only.				
WANE B I-GAD 4.6				
BLKEY I-GAD 7.3				
FIKOX I-GAD 10.2				
One Minute Holding Pattern				



ELEV 569	TDZE 560
----------	----------



CATEGORY	A	B	C	D
S-ILS 24		779-¾	219 (300-¾)	
S-LOC 24	1140-1	580 (600-1)	1140-1¾	580 (600-1¾)
<b>C</b> CIRCLING	1140-1	571 (600-1)	1440-2½	1680-3
			871 (900-2½)	1111 (1200-3)

- HIRL Rwy 6-24
- MIRL Rwy 18-36
- REIL Rwy 6 and 24