

WAAS CH 65905 W24A	APP CRS 244°	Rwy Idg TDZE Apt Elev	6802 560 569
--	------------------------	-----------------------------	---

RNAV (GPS) RWY 24

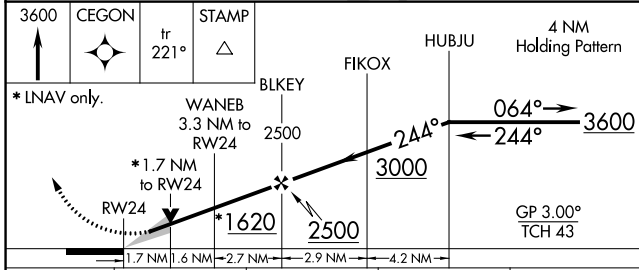
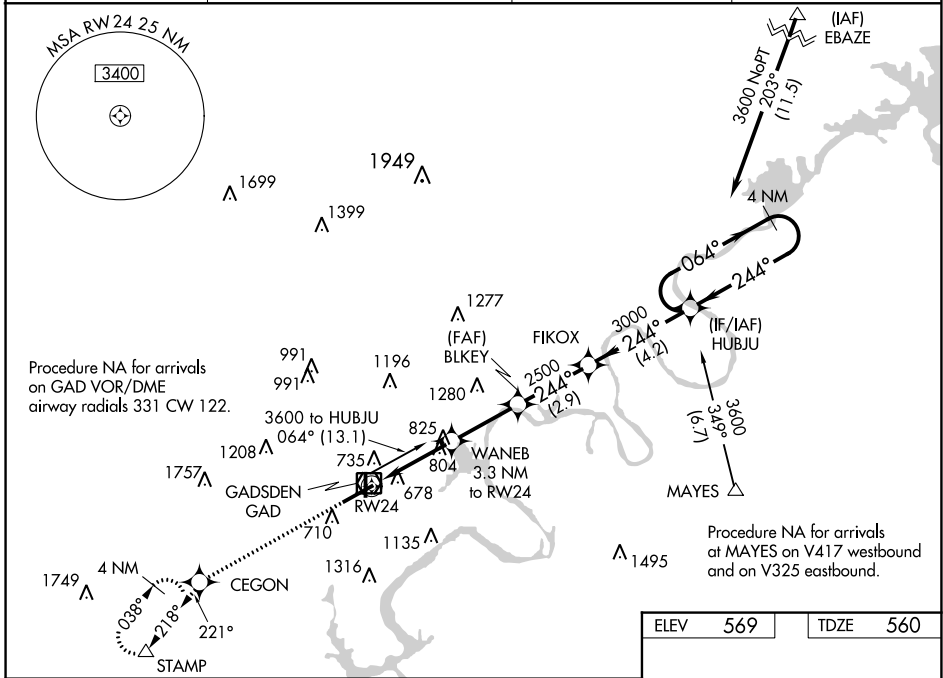
NORTHEAST ALABAMA RGNL (GAD)

RNP APCH.

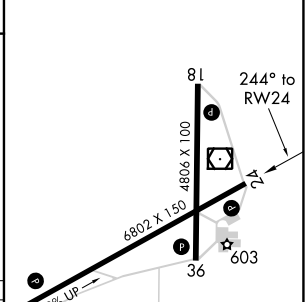
▼ For uncompensated Baro-VNAV systems, LNAV/VNAV NA below -16°C or above 54°C.
 ▲ When local altimeter setting not received, use Annonisn altimeter setting and increase all DAs 66 feet and increase all MDAs 80 feet; increase LPV all Cats visibility 1/8 SM, and increase LNAV Cats C/D and Circling Cat C visibility 1/4 SM. Baro-VNAV and VDP NA when using Annonisn altimeter setting.

MISSED APPROACH: Climb to 3600 direct CEGON and on track 221° to STAMP and hold, continue climb-in-hold to 3600.

AWOS-3PT 127.825	BIRMINGHAM APP CON 125.45 279.65	CLNC DEL 120.05 257.7	UNICOM 122.8 (CTAF)
----------------------------	--	---------------------------------	-------------------------------



ELEV	569	TDZE	560
------	-----	------	-----



CATEGORY	A	B	C	D
LPV DA		781-3/4	221 (300-3/4)	
LNAV/VNAV DA		1016-1 1/8	456 (500-1 1/8)	
LNAV MDA	1140-1	580 (600-1)	1140-1 3/4	580 (600-1 3/4)
CIRCLING	1140-1	571 (600-1)	1140-1 3/4	1140-2
			571 (600-1 3/4)	571 (600-2)

- HIRL Rwy 6-24
- MIRL Rwy 18-36
- REIL Rwy 6 and 24

SE-4, 18 MAY 2023 to 15 JUN 2023

SE-4, 18 MAY 2023 to 15 JUN 2023