

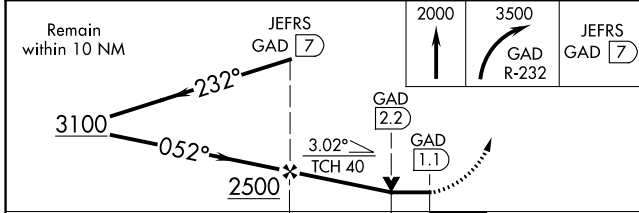
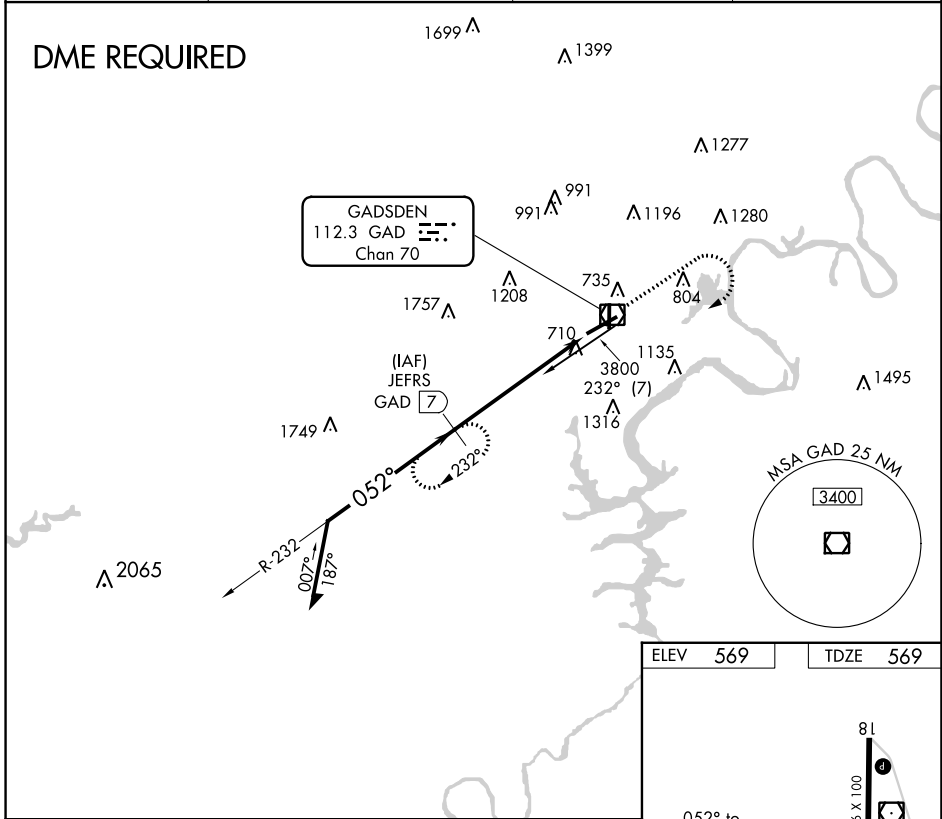
VOR/DME GAD <b>112.3</b> Chan <b>70</b>	APP CRS <b>052°</b>	Rwy Idg TDZE <b>569</b> Apt Elev <b>569</b>	<b>6802</b>
---	------------------------	---	-------------

**VOR RWY 6**  
NORTHEAST ALABAMA RGNL (GAD)

**⚠** When local altimeter setting not received, use Anniston altimeter setting and increase all MDAs 80 feet; increase S-6 Cat C/D visibility ¼ mile and Circling Cat C ½ SM. VDP NA when using Anniston altimeter setting. DME required.

**MISSED APPROACH:** Climb to 2000 then climbing right turn to 3500 on GAD VOR/DME R-232 to JEFRS/7 DME and hold.

AWOS-3PT <b>127.825</b>	BIRMINGHAM APP CON <b>125.45 279.65</b>	CLNC DEL <b>120.05 257.7</b>	UNICOM <b>122.8 (CTAF)</b>
----------------------------	--	---------------------------------	-------------------------------



ELEV	569	TDZE	569
HIRL Rwy 6-24 <b>Ⓛ</b> MRL Rwy 18-36 <b>Ⓛ</b> REIL Rws 6 and 24 <b>Ⓛ</b>			
FAF to MAP 5.9 NM			
Knots	60	90	120 150 180
Min:Sec	5:54	3:56	2:57 2:22 1:58

CATEGORY	A	B	C	D
S-6	960-1 391 (400-1)		960-1½ 391 (400-1½)	
<b>C</b> CIRCLING	1100-1 531 (600-1)		1440-2½ 871 (900-2½)	1680-3 1111 (1200-3)

SE-4, 18 MAY 2023 to 15 JUN 2023

SE-4, 18 MAY 2023 to 15 JUN 2023