

LOC/DME I-BTJ 109.35 Chan 30 (Y)	APP CRS 333°	Rwy Idg TDZE Apt Elev 9803 995 1015
---	------------------------	---

ILS or LOC RWY 33

ROBERT GRAY AAF (GRK)

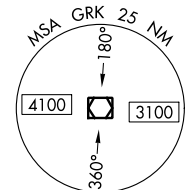
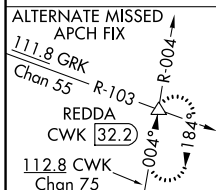
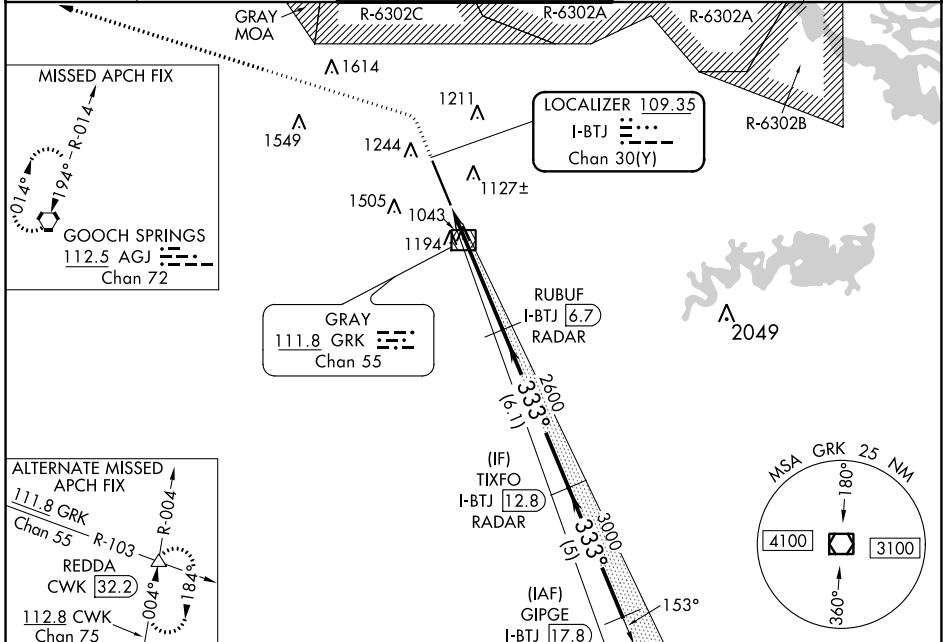
DME or RADAR required.

ASR/PAR Circling NA west of Rwy 15-33. For inop ALS, increase S-ILS 33 Cat E visibility to 3/4 SM and S-LOC 33 Cat C/D/E visibility to 1 SM.

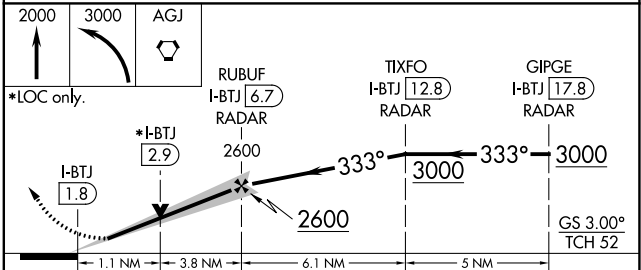
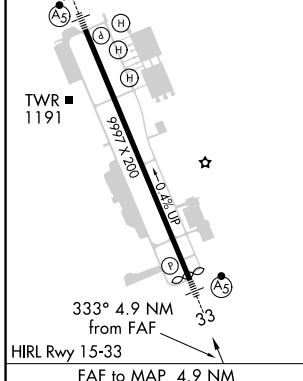


MISSED APPROACH: Climb to 2000 then climbing left turn to 3000 direct AGJ VORTAC and hold.

ATIS 124.9	GRAY APP CON 120.075 323.15	GRAY TOWER 120.75 (CTAF) 285.5	GND CON 121.8 279.5	CLNC DEL 126.2 251.1
----------------------	---------------------------------------	--	-------------------------------	--------------------------------



ELEV 1015	TDZE 995
-----------	----------



CATEGORY	A	B	C	D	E
S-ILS 33	1195-1/2 200 (200-1/2)				
S-LOC 33	1360-1/2	365 (400-1/2)	1360-3/4	365 (400-3/4)	
CIRCLING	1540-1	525 (600-1)	1560-1/2 545 (600-1 1/2)	1620-2 605 (700-2)	1740-2 1/2 725 (800-2 1/2)

SC-3, 18 MAY 2023 to 15 JUN 2023

SC-3, 18 MAY 2023 to 15 JUN 2023