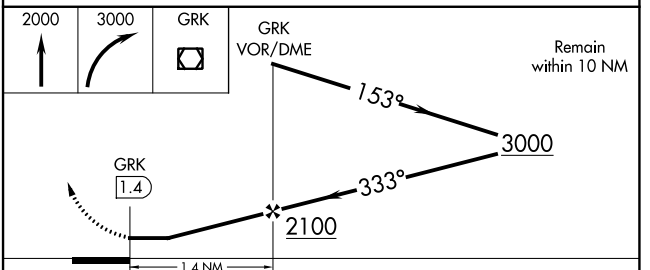
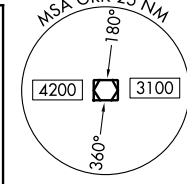
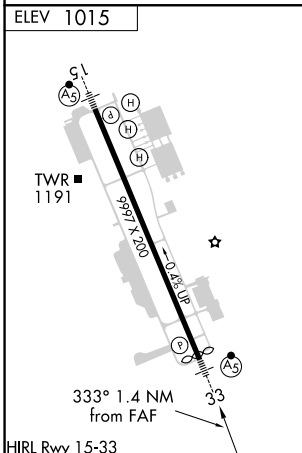
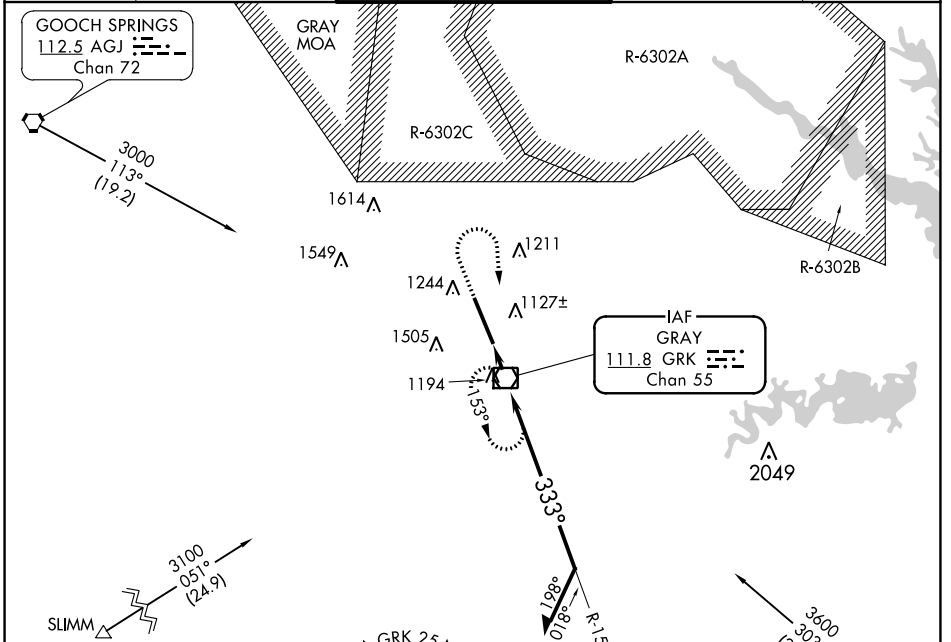


VOR/DME GRK <b>111.8</b> Chan <b>55</b>	APP CRS <b>333°</b>	Rwy Idg TDZE Apt Elev	<b>N/A</b> <b>N/A</b> <b>1015</b>
---	------------------------	-----------------------------	---

**VOR-A**  
ROBERT GRAY AAF (GRK)

**NA** Circling NA W of Rwy 15-33.  
ASR/PAR MISSED APPROACH: Climb to 2000 then climbing right turn to 3000 direct GRK VOR/DME and hold.

ATIS <b>124.9</b>	GRAY APP CON <b>120.075 323.15</b>	GRAY TOWER <b>120.75 285.5</b>	GND CON <b>121.8 279.5</b>	CLNC DEL <b>126.2 251.1</b>
----------------------	---------------------------------------	-----------------------------------	-------------------------------	--------------------------------



FAF to MAP 1.4 NM		CATEGORY	A	B	C	D
Knots	60 90 120 150 180	<input checked="" type="checkbox"/> CIRCLING	1540-1	525 (600-1)	1560-1½ 545 (600-1½)	1620-2 605 (700-2)
Min:Sec	1:24 0:56 0:42 0:34 0:28					

SC-3, 18 MAY 2023 to 15 JUN 2023

SC-3, 18 MAY 2023 to 15 JUN 2023