

LOC/DME I-LAL 110.1 Chan 38	APP CRS 096°	Rwy Idg TDZE Apt Elev	8500 132 142
--	------------------------	-----------------------------	---

ILS or LOC RWY 10

LAKELAND LINDER INTL (LAL)

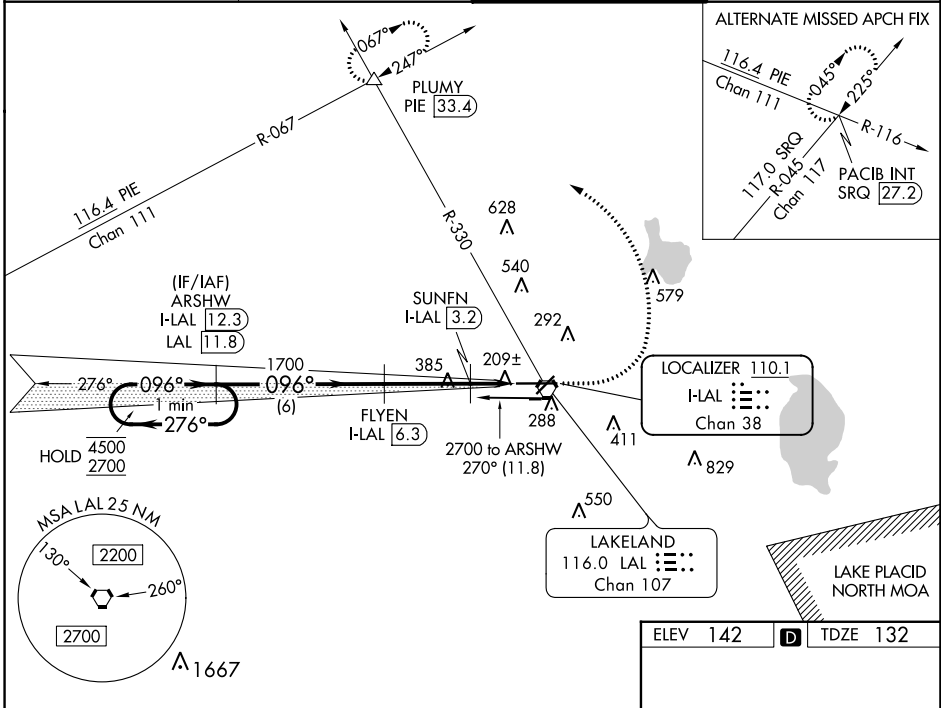
DME required.

A Circling NA to Rwys 8 and 26.

ALSF-2

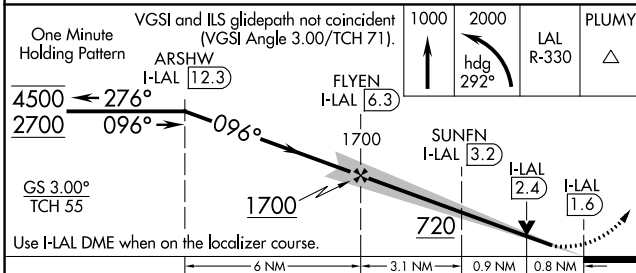
MISSED APPROACH: Climb to 1000 then climbing left turn to 2000 on heading 292° and on LAL VORTAC R-330 to PLUMY INT/PIE 33.4 DME and hold.

ATIS 118.025	TAMPA APP CON 120.65 290.3	LAKELAND TOWER 124.5 236.775	GND CON 121.4
------------------------	--------------------------------------	--	-------------------------



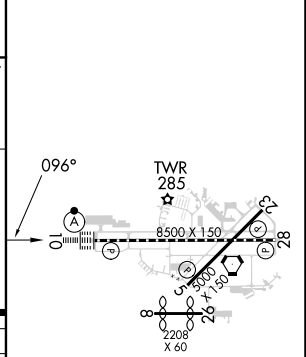
SE-3, 18 MAY 2023 to 15 JUN 2023

SE-3, 18 MAY 2023 to 15 JUN 2023



ELEV 142	D TDZE 132
----------	-------------------

CATEGORY	A	B	C	D
S-ILS 10		332/18	200 (200-½)	
S-LOC 10		460/24	328 (400-½)	
C CIRCLING	600-1 458 (500-1)	660-1 518 (600-1)	720-1½ 578 (600-1½)	840-2¼ 698 (700-2¼)



TDZ/CL Rwy 10 HIRL Rwy 5-23 and 10-28
--

LAKELAND LINDER INTL (LAL)

ILS or LOC RWY 10