

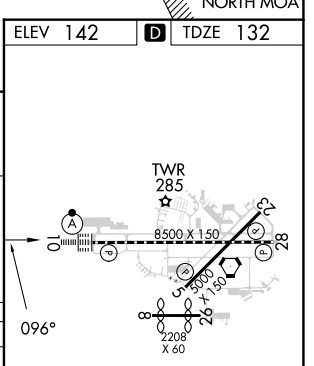
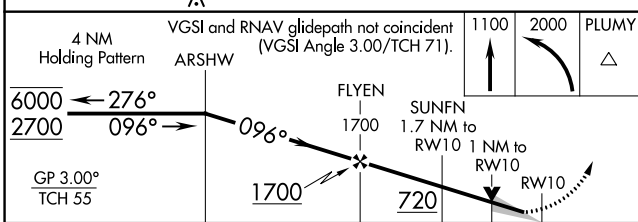
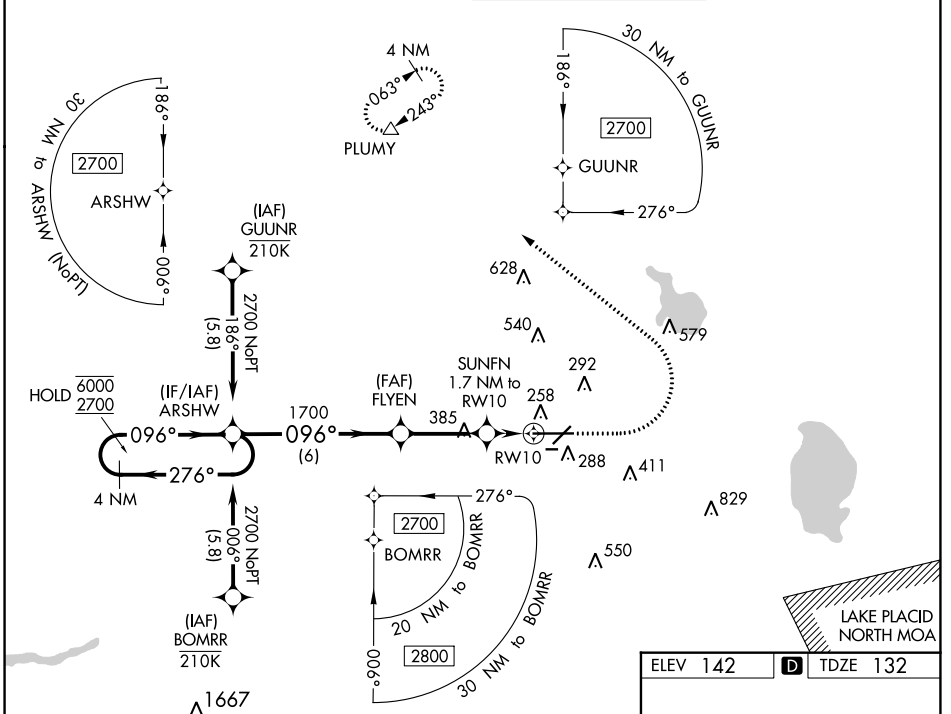
WAAS CH 78305 W10A	APP CRS 096°	Rwy Idg 8500 TDZE 132 Apt Elev 142
--	------------------------	---

RNAV (GPS) RWY 10

LAKELAND LINDER INTL (LAL)

RNP APCH-GPS.	ALSF-2	MISSED APPROACH: Climb to 1100 then climbing left turn to 2000 direct PLUMY and hold.
<p>⚠ Circling NA to Rws 8 and 26. For uncompensated Baro-VNAV systems, LNAV/VNAV NA below -15°C or above 54°C. For inop ALS, increase LNAV/VNAV all Cats visibility to RVR 4500.</p>		

ATIS 118.025	TAMPA APP CON 120.65 290.3	LAKELAND TOWER 124.5 236.775	GND CON 121.4
------------------------	--------------------------------------	--	-------------------------



CATEGORY	A	B	C	D
LPV DA		332/18	200 (200-½)	
LNAV/VNAV DA		439/24	307 (300-½)	
LNAV MDA	520/24	388 (400-½)	520/35	388 (400-¾)
C CIRCLING	600-1 458 (500-1)	660-1 518 (600-1)	720-1½ 578 (600-1½)	840-2¼ 698 (700-2¼)

ELEV 142	TDZE 132
<p>TWR 285</p> <p>8500 X 150</p> <p>2208 X 60</p>	

SE-3, 18 MAY 2023 to 15 JUN 2023

SE-3, 18 MAY 2023 to 15 JUN 2023