

WAAS CH <b>82605</b> <b>W28A</b>	APP CRS <b>276°</b>	Rwy Idg TDZE <b>142</b> Apt Elev <b>142</b>	<b>8500</b>
----------------------------------------	------------------------	---------------------------------------------------	-------------

# RNAV (GPS) RWY 28

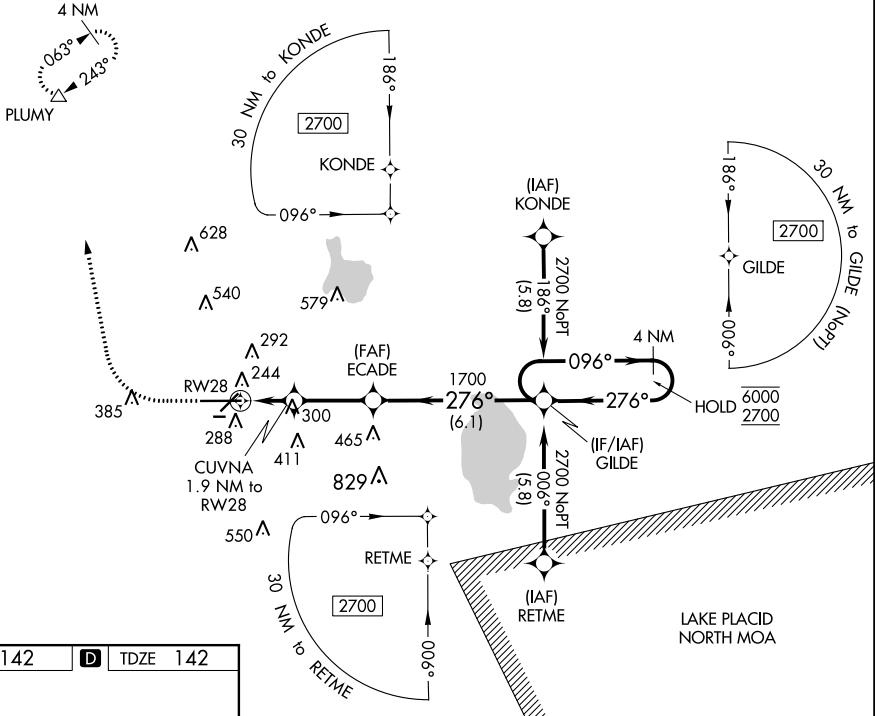
LAKELAND UNDER INTL (LAL)

RNP APCH-GPS.

**▼** Rwy 28 helicopter visibility reduction below RVR 4000 NA.  
**▲** For uncompensated Baro-VNAV systems, LNAV/VNAV NA below -15°C or above 54°C. Circling NA to Rws 8 and 26.

MISSED APPROACH: Climb to 1000 then climbing right turn to 2000 direct PLUMY and hold.

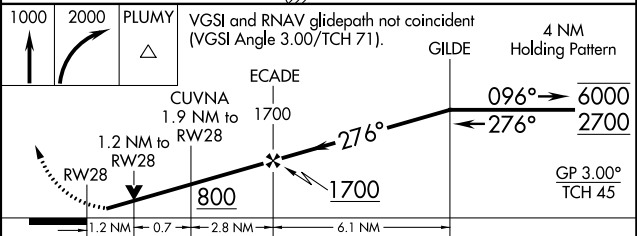
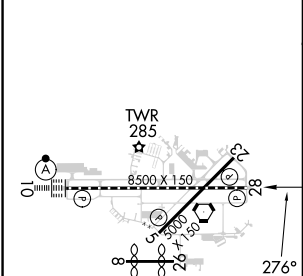
ATIS <b>118.025</b>	TAMPA APP CON <b>120.65 290.3</b>	LAKELAND TOWER <b>124.5 236.775</b>	GND CON <b>121.4</b>
------------------------	--------------------------------------	----------------------------------------	-------------------------



SE-3, 18 MAY 2023 to 15 JUN 2023

SE-3, 18 MAY 2023 to 15 JUN 2023

ELEV 142	<b>D</b> TDZE 142
----------	-------------------



CATEGORY	A	B	C	D
LPV DA		392/40	250 (300-¾)	
LNAV/VNAV DA		525/60	383 (400-1¼)	
LNAV MDA	600/55	458 (500-1)	600-1¾	458 (500-1¾)
<b>C</b> CIRCLING	600-1 458 (500-1)	660-1 518 (600-1)	720-1½ 578 (600-1½)	840-2¼ 698 (700-2¼)

TDZ/CL Rwy 10  
HIRL Rws 5-23 and 10-28