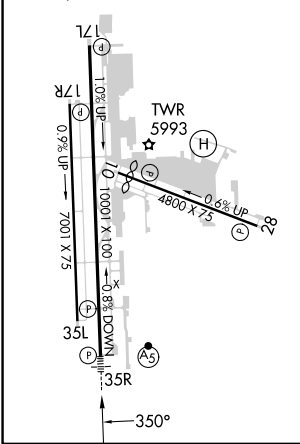
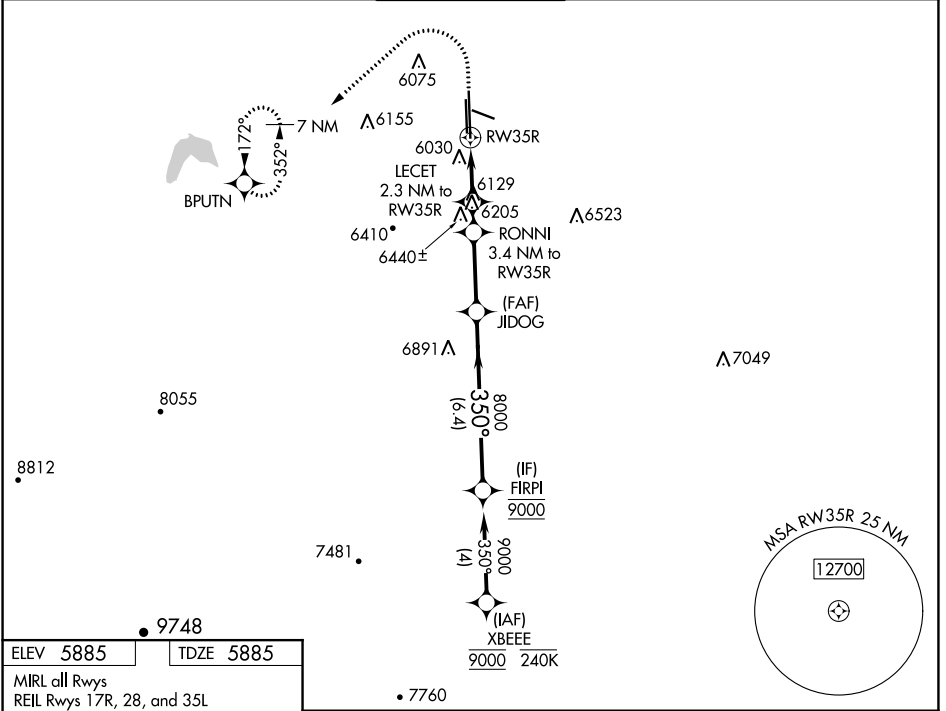


WAAS CH <b>40339</b> <b>W35A</b>	APP CRS <b>350°</b>	Rwy Idg TDZE Apt Elev	<b>10001</b> <b>5885</b> <b>5885</b>
--	------------------------	-----------------------------	--

# RNAV (GPS) RWY 35R

CENTENNIAL (APA)

RNP APCH.		MALSR	MISSED APPROACH: (Do not exceed 240K until BPUTN) Climb to 8200 then climbing left turn to 9600 direct BPUTN and hold.	
<p><b>▼</b> Circling Rwy 35L NA at night. For uncompensated Baro-VNAV systems, LNAV/VNAV NA below -21°C or above 54°C. For inop ALS, increase LNAV Cats C/D visibility to 1 3/8 SM.</p> <p><b>▲</b></p>				
ATIS <b>120.3</b>	DENVER APP CON <b>132.75 269.3</b>	<b>CENTENNIAL TOWER</b> <b>118.9</b>	GND CON <b>121.8</b>	CLNC DEL <b>128.6</b>



ELEV 5885	TDZE 5885	<p>MIRL all Rwy's REIL Rwy's 17R, 28, and 35L</p>			
8200	9600	BPUTN	FIRPI		
<p>LE CET 2.3 NM to RW35R</p> <p>RONNI 3.4 NM to RW35R</p> <p>JIDOG 8000</p> <p>FIRPI 9000</p>		<p>350°</p> <p>8000</p>		<p>GP 3.10°</p> <p>TCH 51</p>	
<p>1.4 NM</p> <p>0.9 NM</p> <p>1.1 NM</p> <p>2.9 NM</p> <p>6.4 NM</p>					
CATEGORY	A	B	C	D	
LPV DA	6085-1/2		200 (200-1/2)		
LNAV/VNAV DA	6324-3/4		439 (500-3/4)		
LNAV MDA	6380-1/2		6380-1		495 (500-1)
<input checked="" type="checkbox"/> CIRCLING	6400-1	6540-1	6740-2 1/2	6760-2 3/4	
	515 (600-1)	655 (700-1)	855 (900-2 1/2)	875 (900-2 3/4)	

SW-1, 18 MAY 2023 to 15 JUN 2023

SW-1, 18 MAY 2023 to 15 JUN 2023