

LOC I-MKT 108.7	APP CRS 331°	Rwy Idg TDZE Apt Elev	6600 1021 1021
---------------------------	------------------------	-----------------------------	---

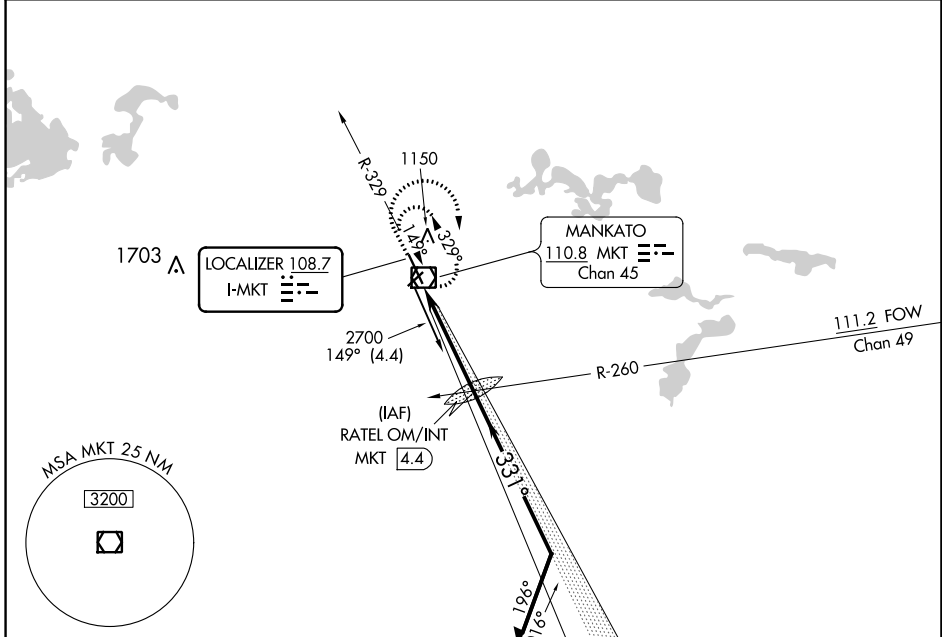
COPTER ILS or LOC RWY 33

MANKATO RGNL (MKT)

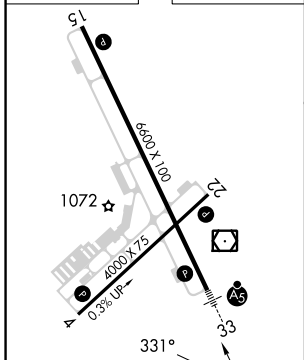
NA For inoperative MALSRS increase visibility to ½ mile. When local altimeter setting not received, use Waseca altimeter setting; increase DA to 1278 feet; increase MDA 60 feet.

MALSRS MISSED APPROACH: Climb to 2000 then climbing right turn to 2700 direct MKT VOR/DME and hold.

AWOS-3PT 118.175	MINNEAPOLIS CENTER 135.0 306.9	UNICOM 122.725 (CTAF)
----------------------------	--	---------------------------------



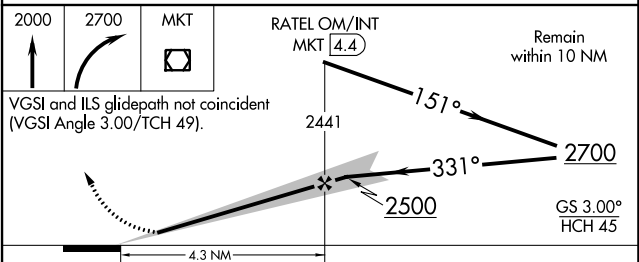
ELEV 1021	TDZE 1021
-----------	-----------



MIRL Rwy 4-22 (L)
HIRL Rwy 15-33 (L)
REIL Rwys 4, 15 and 22 (L)

FAF to MAP 4.3 NM

Knots	45	60	75	90	105
Min:Sec	5:44	4:18	3:26	2:52	2:27



CATEGORY	COPTER	B	C	D
S-ILS 33	1221-¼ 200 (200-¼)		NA	
S-LOC 33	1420-¼ 399 (400-¼)		NA	
CIRCLING		NA		