

LOC I-MKT 108.7	APP CRS 331°	Rwy Idg TDZE Apt Elev	6600 1021 1021
---------------------------	------------------------	-----------------------------	---

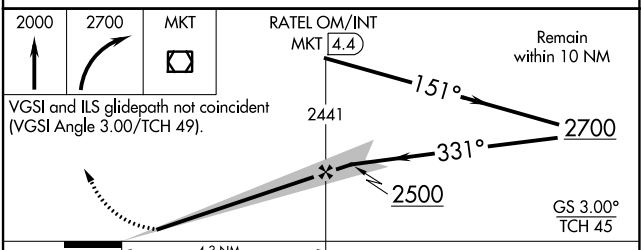
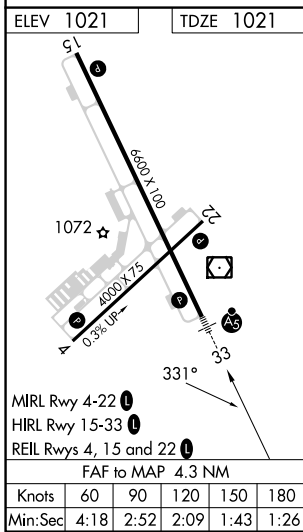
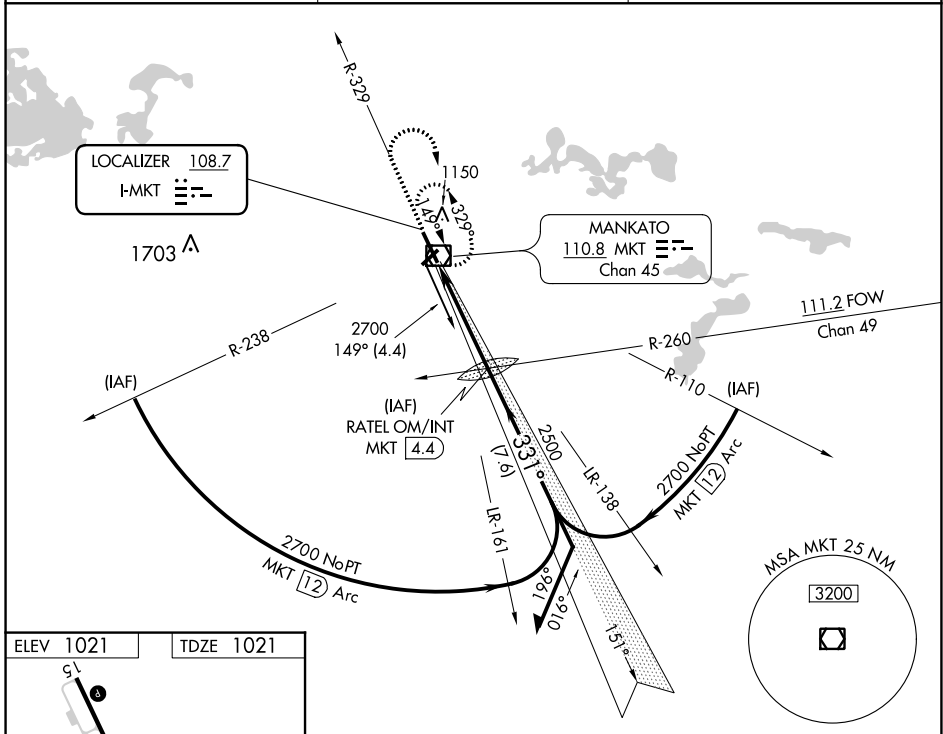
ILS or LOC RWY 33

MANKATO RGNL (MKT)

NA For inop MALSR when using Waseca altimeter setting, increase S-ILS 33 all Cats visibility to 7/8 mile. When local altimeter setting not received, use Waseca altimeter setting: increase DA to 1278 feet; increase all MDA 60 feet and increase S-LOC 33 Cats C/D and Circling Cat C visibility 1/4 SM.

MALSR MISSED APPROACH: Climb to 2000 then climbing right turn to 2700 direct MKT VOR/DME and hold.

AWOS-3PT 118.175	MINNEAPOLIS CENTER 135.0 306.9	UNICOM 122.725 (CTAF) U
----------------------------	--	--



CATEGORY	A	B	C	D
S-ILS 33	1221-1/2 200 (200-1/2)			
S-LOC 33	1420-1/2	399 (400-1/2)	1420-5/8	399 (400-5/8)
CIRCLING	1460-1 439 (500-1)	1480-1 459 (500-1)	1600-1 1/2 579 (600-1 1/2)	1600-2 579 (600-2)