

APP CRS	Rwy Idg	4000
223°	TDZE	1021
	Apt Elev	1021

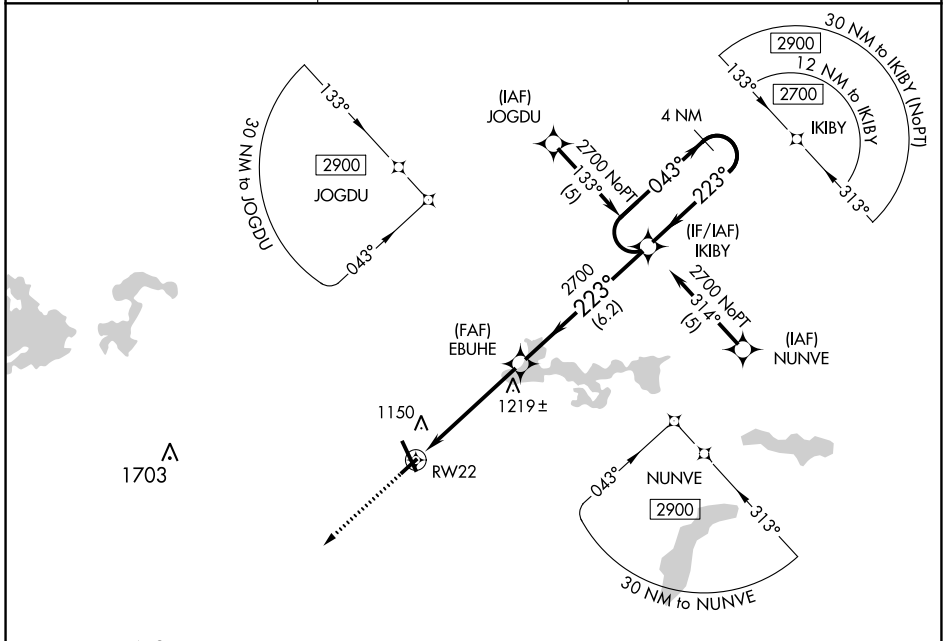
RNAV (GPS) RWY 22

MANKATO RGNL (MKT)

⚠ DME/DME RNP-0.3 NA. Visibility reduction by helicopters NA. When local altimeter setting not received, use Waseca altimeter setting: increase all MDA 60 feet and visibility Circling Cat C ¼ SM.

⚠ MISSED APPROACH: Climb to 2700 direct KABGE and hold.

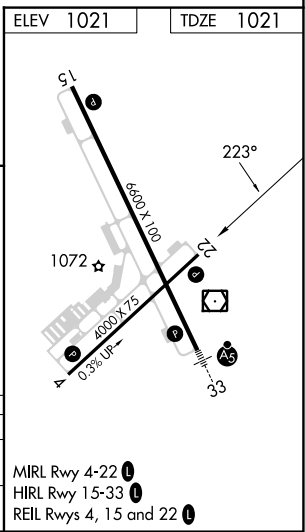
AWOS-3PT 118.175	MINNEAPOLIS CENTER 135.0 306.9	UNICOM 122.725 (CTAF) 📶
----------------------------	--	--



NC-1, 18 MAY 2023 to 15 JUN 2023

NC-1, 18 MAY 2023 to 15 JUN 2023

	ELEV 1021	TDZE 1021		
	<p>4 NM Holding Pattern</p> <p>043° → 2700</p> <p>← 223°</p> <p>VGSI and descent angles not coincident (VGSI Angle 3.00/TCH 26).</p>			
CATEGORY	A	B	C	D
LNVA MDA	1540-1	519 (600-1)	1540-1½ 519 (600-1½)	NA
CIRCLING	1540-1	519 (600-1)	1600-1½ 579 (600-1½)	NA



MIRL Rwy 4-22 **📶**
HIRL Rwy 15-33 **📶**
REIL Rws 4, 15 and 22 **📶**