

WAAS CH 86315 W33A	APP CRS 331°	Rwy ldg TDZE 1021 Apt Elev 1021
--	------------------------	---

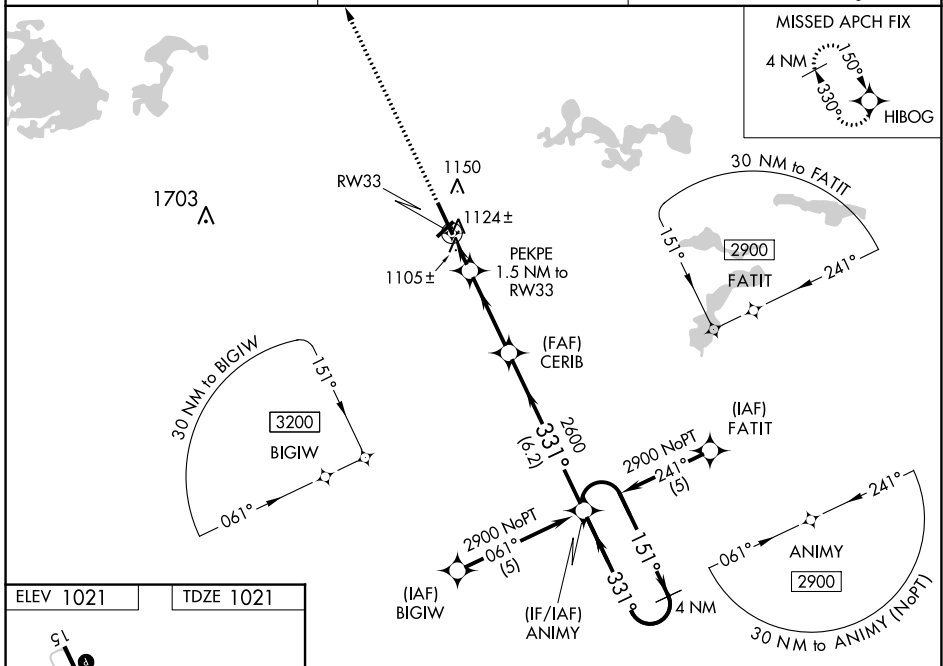
RNAV (GPS) RWY 33

MANKATO RGNL (MKT)

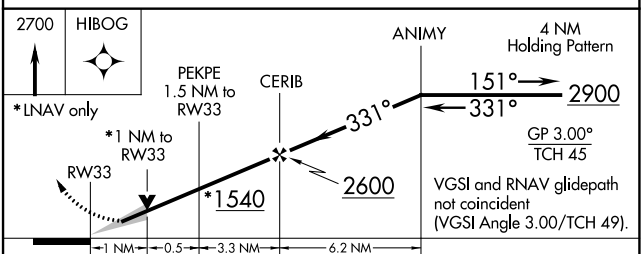
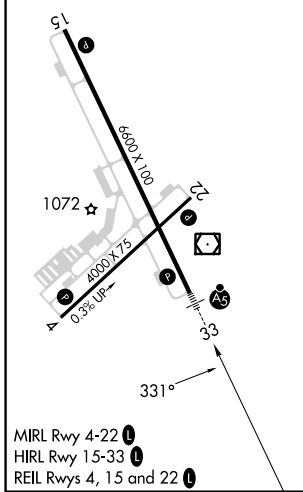
For uncompensated Baro-VNAV systems, LNAV/VNAV NA below -17°C (2°F) or above 46°C (114°F). DME/DME RNP-0.3 NA. When local altimeter setting not received, use Waseca altimeter setting: increase LPV DA to 1278 feet, LNAV/VNAV DA to 1432 feet and LNAV/VNAV visibility ½ SM all Cats; increase all MDA 60 feet and visibility LNAV Cats C and D ½ SM and Circling Cat C ¼ SM. For inoperative MALSR when using Waseca altimeter setting, increase LPV all Cats visibility to ¾ mile and LNAV Cat C and D visibility to 1½ mile. Baro-VNAV and VDP NA when using Waseca altimeter setting. For inoperative MALSR, increase LNAV/VNAV all Cats visibility to 1½ mile and LNAV Cats C and D visibility to 1 mile.

MALSR
MISSED APPROACH:
Climb to 2700 direct HIBOG and hold.

AWOS-3PT 118.175	MINNEAPOLIS CENTER 135.0 306.9	UNICOM 122.725 (CTAF)
----------------------------	--	---------------------------------



ELEV 1021	TDZE 1021
-----------	-----------



CATEGORY	A	B	C	D
LPV DA		1221-½	200 (200-½)	
LNAV/VNAV DA		1375-¾	354 (400-¾)	
LNAV MDA	1380-½	359 (400-½)	1380-⅝	359 (400-⅝)
CIRCLING	1460-1 439 (500-1)	1480-1 459 (500-1)	1600-1½ 579 (600-1½)	1600-2 579 (600-2)

NC-1, 18 MAY 2023 to 15 JUN 2023

NC-1, 18 MAY 2023 to 15 JUN 2023