

APP CRS **035°**
 Rwy Idg **4315**
 TDZE **1513**
 Apt Elev **1515**

RNAV (GPS) RWY 5

HEMET-RYAN (HMT)

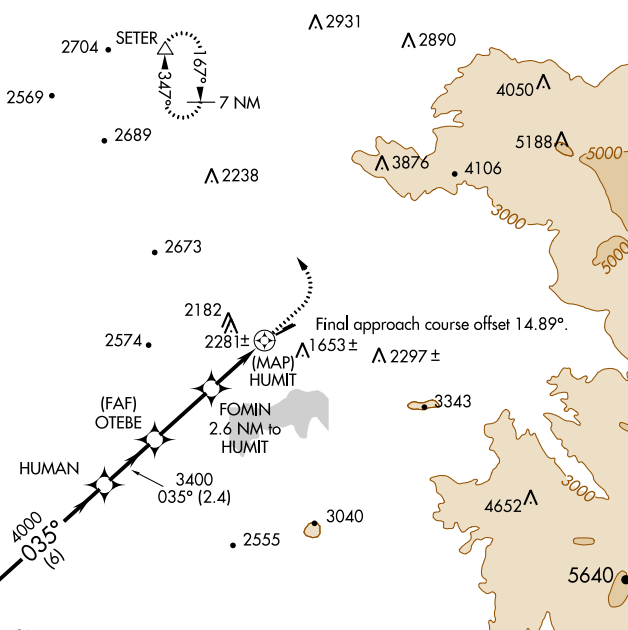
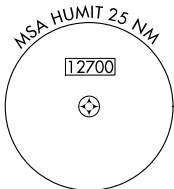
RNP APCH

MISSED APPROACH: Climb to 2500 then climbing left turn to 7900 direct SETER and hold, continue climb-in-hold to 7900.

AWOS-3PT
118.375

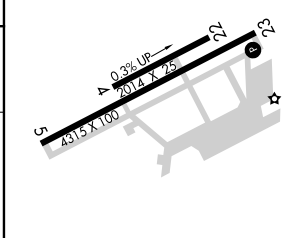
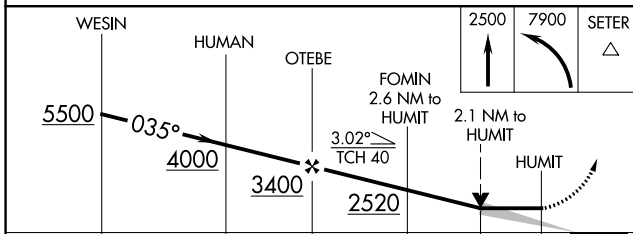
MARCH APP CON *
133.5 306.975

UNICOM
123.0 (CTAF)



Procedure NA for arrivals at WESIN on V186 southeast bound.

ELEV 1515 TDZE 1513



Rwy 4-22 restricted for glider operations.

CATEGORY	A	B	C	D
LNVA MDA	2360-1 847 (900-1)	2360-1¼ 847 (900-1¼)	2360-2½ 847 (900-2½)	NA
CIRCLING	2620-1¼ 1105 (1200-1¼)	2620-1½ 1105 (1200-1½)	2880-3 1365 (1400-3)	NA

MRL Rwy 5-23

SW-3, 18 MAY 2023 to 15 JUN 2023

SW-3, 18 MAY 2023 to 15 JUN 2023