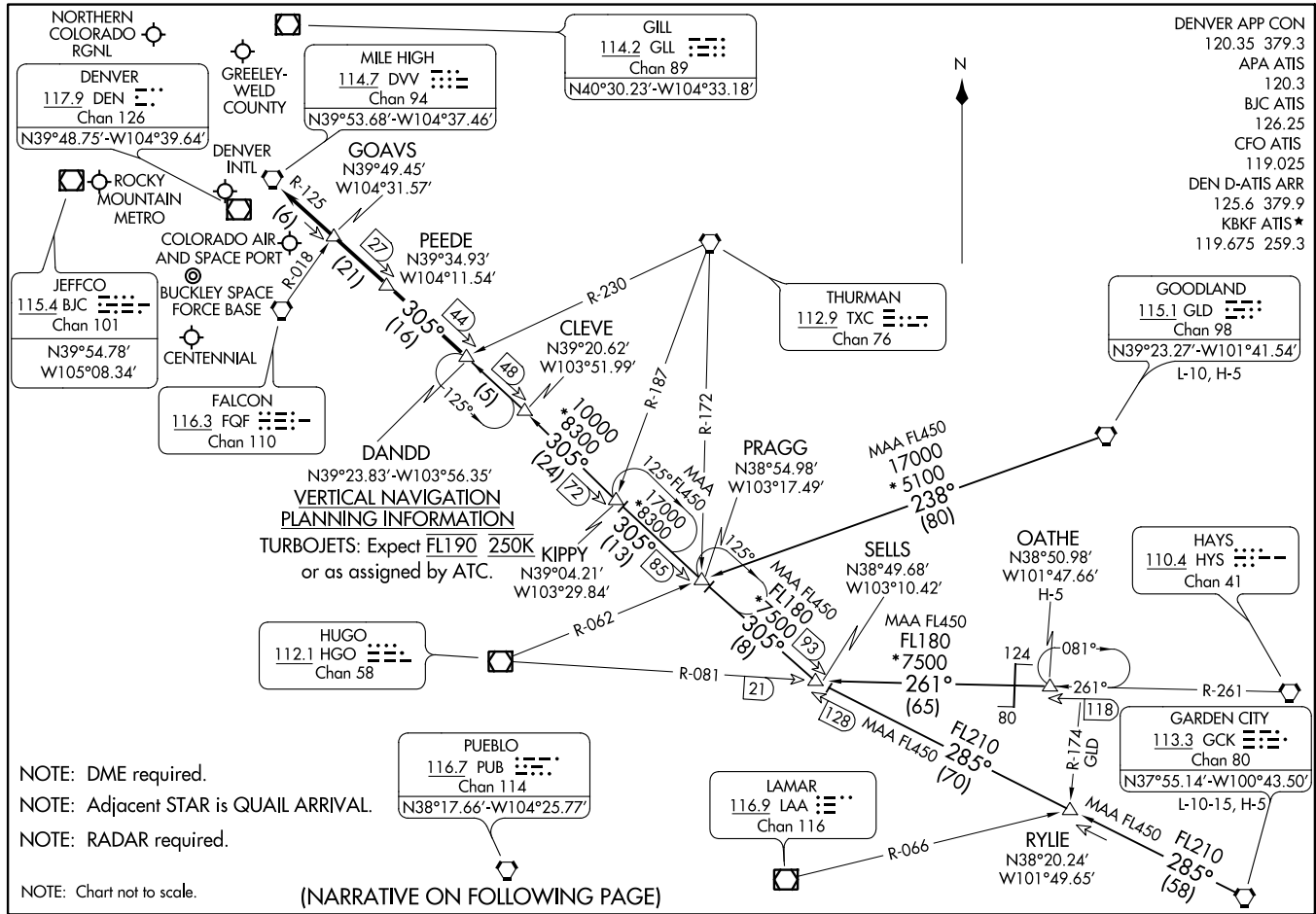


DANDD ONE ARRIVAL  
(DANDD.DANDD1) 30ANZ0



NOTE: DME required.  
 NOTE: Adjacent STAR is QUAIL ARRIVAL.  
 NOTE: RADAR required.

NOTE: Chart not to scale.

(NARRATIVE ON FOLLOWING PAGE)

DENVER APP CON 120.35 379.3  
 APA ATIS 120.3  
 BJC ATIS 126.25  
 CFO ATIS 119.025  
 DEN D-ATIS ARR 125.6 379.9  
 KBKF ATIS\* 119.675 259.3

GOODLAND 115.1 GLD  
 Chan 98  
 N39°23.27'-W101°41.54'  
 L-10, H-5

HAYS 110.4 HYS  
 Chan 41

GARDEN CITY 113.3 GCK  
 Chan 80  
 N37°55.14'-W100°43.50'  
 L-10-15, H-5

LAMAR 116.9 LAA  
 Chan 116

PUEBLO 116.7 PUB  
 Chan 114  
 N38°17.66'-W104°25.77'

HUGO 112.1 HGO  
 Chan 58

DENVER, COLORADO

(DANDD.DANDD1) 22307  
 DANDD ONE ARRIVAL

AL-9077 (FAAN)

DENVER, COLORADO

ARRIVAL ROUTE DESCRIPTION

GARDEN CITY TRANSITION (GCK.DANDD1): From over GCK VORTAC on GCK R-285 and DVV R-125 to DANDD. Thence. . . .

GOODLAND TRANSITION (GLD.DANDD1): From over GLD VORTAC on GLD R-238 and DVV R-125 to DANDD. Thence. . . .

OATHE TRANSITION (OATHE.DANDD1): From over OATHE on HYS R-261 and HGO R-081 to SELLS, then on DVV R-125 to DANDD. Thence. . . .

. . . .from over DANDD on DVV R-125 to DVV VORTAC. Expect RADAR vectors to the final approach course at or before DVV VORTAC.

SW-1, 18 MAY 2023 to 15 JUN 2023

SW-1, 18 MAY 2023 to 15 JUN 2023